

The words FORGINGS or CASTINGS, IRON or STEEL, should be struck out as may be required.

S.S. "Daylight"

Received at

Office.

18

# Lloyd's Register of British and Foreign Shipping.

(Report on Vessel No. 7640 Port )

*Mpool*  
No. 1140A. SHIP FORGINGS <sup>and</sup> OR CASTINGS.

I have to report that the undermentioned Iron <sup>and</sup> or Steel Forgings <sup>and</sup> or Castings, manufactured by *The Darlington Forge Co.* of *Darlington* for the Vessel No. 302, being built by *Messrs R Dixon & Co.* of *Middlesbrough* have been inspected by me as set forth below, and found to be, so far as can be seen, *sound*

*This stern frame has been tested in accordance with the Rules and found satisfactory*

Mark on Forgings.

Lloyd's

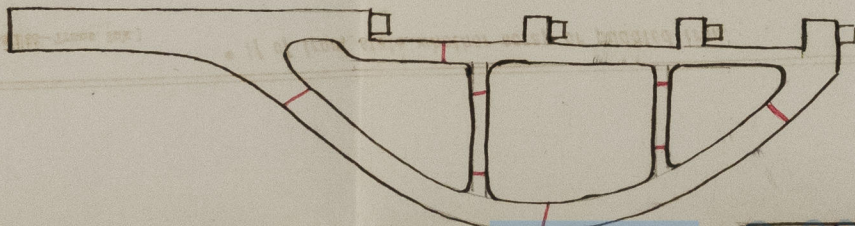
No. 1140A.

*Wm Cameron*

*Sunderland 12/6/88*

	STERN FRAME.	RUDDER FRAME.	STEM.
Material* - - -	<i>Swedish cast steel</i>	<i>Scrap iron</i>	
How made - - -	<i>Cast in 2 pieces &amp; cranked</i>	<i>Forged</i>	
Dimensions - - -	<i>as per drawing attached</i>	<i>4 3/4 x 3 3/4</i>	
Progress on Inspection -	<i>Cast &amp; finished</i>	<i>Smithed</i>	<i>Not seen</i>
Dates when Inspected	<i>June 29 July 27 March 18/89 May 4. 11-16-29-31/89</i>		

SKETCHES OF FRAMES SHEWING POSITION AND DESCRIPTION OF WELDS OF FORGINGS, OR PARTICULARS OF TESTS APPLIED TO CASTINGS.



*Welds*