

S. S. Echuca

Received at *W. H. Hartlepool* office. *15<sup>th</sup> Nov* 1888

# Lloyd's Register of British and Foreign Shipping.

*Hartlepool*

(Report on Vessel No. *7246* Port *W. H. pl.*)

No. *914A*

## SHIP FORGINGS OR CASTINGS.

The words FORGINGS or CASTINGS, IRON or STEEL, should be struck out as may be required.

I have to report that the undermentioned Iron or Steel Forgings or Castings, manufactured by

*The Darlington Forge Co* of *Darlington*  
for the Vessel No. *289*, being built by *Messrs R Dixon & Co.*  
of *Middlesbrough* have been inspected by me as set forth below, and found  
to be, so far as can be seen, *sound*

Mark on Forgings.

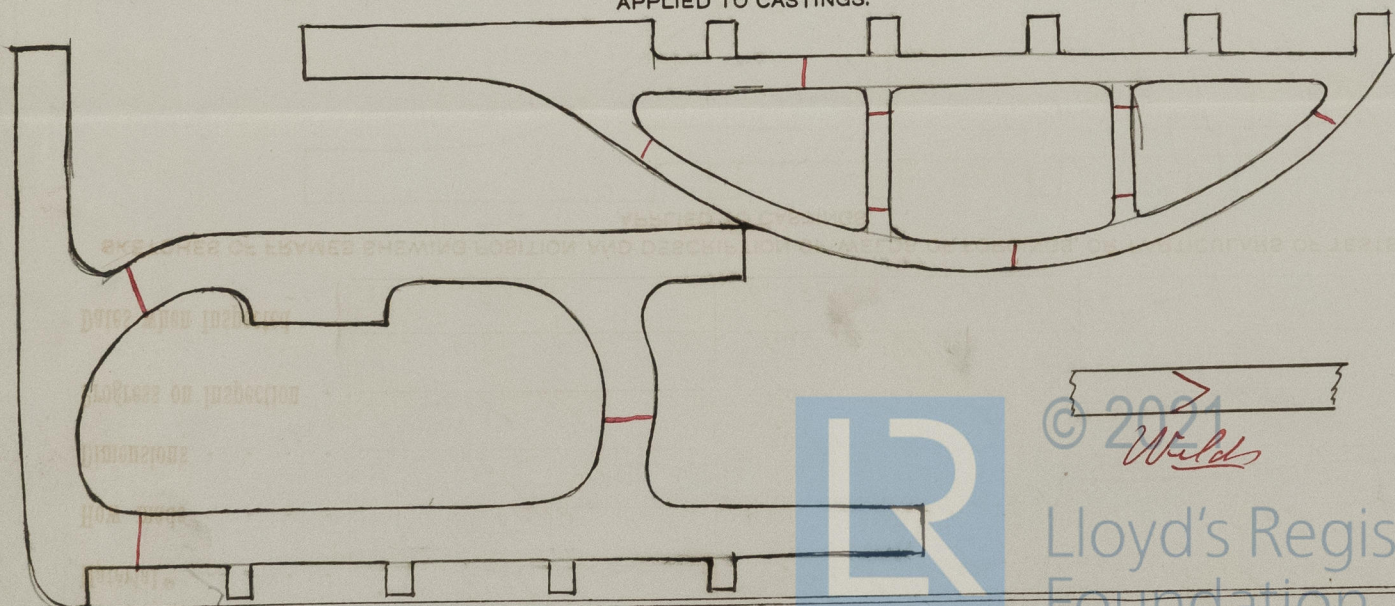
Lloyd's

No. *914A*  
*R.D.C.*

*Hugh Cameron*  
*Sunderland*

	STERN FRAME.	RUDDER FRAME.	STEM.
Material*	<i>Scrap iron</i>	<i>Scrap iron</i>	<i>Scrap iron</i>
How made	<i>Forged</i>	<i>Forged</i>	<i>Forged</i>
Dimensions	<i>12" x 6"</i>	<i>8 1/2"</i>	<i>10" x 2 3/4"</i>
Progress on Inspection	<i>Forged Smithed</i>	<i>Forged Smithed</i>	<i>Forged</i>
Dates when Inspected	<i>May 18-26-30 June 4</i> <i>8-15-21/88</i>	<i>Aug 30 Sept 6-8-13-19</i> <i>26-29 Oct 4-10-13/88</i>	<i>June 21/88</i>

SKETCHES OF FRAMES SHEWING POSITION AND DESCRIPTION OF WELDS OF FORGINGS, OR PARTICULARS OF TESTS APPLIED TO CASTINGS.



\* If of Iron, state whether scrap or puddled Iron.