

TELEGRAPHIC ADDRESS.
"BEARDMORE, GLASGOW"

TELEPHONE NO 1356.

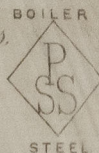
LONDON OFFICE,
11 QUEEN VICTORIA ST. E.C.
NEWCASTLE OFFICE,
2 SAINT NICHOLAS BUILDINGS.

Parkhead Forge, Rolling Mills,
and Steel Works,
Glasgow 4th July 1888

Messrs The Richardson Son

Bought of William Beardmore & Co.

Manufacturers of Steel Plates Bars & Rivets, Siemens Process & Iron Plates Bars &
Rivets for Ships, Boilers, &c. & Marine Engine Forgings of all descriptions.
Iron & Steel Plates flanged for Boiler Fronts &c.



828	3	135	12-8	48 1/2	13 1/16	2 7 4
	2	140	6-3 1/2	53 1/2	1 1/32	1 10 24
	3	141	0	61 1/2	3/4	2 2 8
	1	142	4-0	33	9/16	2 1
	3	143	6-3 1/2	61 1/2	3/4	2 2 24
	2	144	0	53 1/2	1 1/32	1 10 2 4
	2	145	5-4 1/2	60	13/16	16 1 16
	1	146	4-8	17	3/4	1 3 16
	4	147	5-7	4	1 5/16	10 3 20
	3	148	16-3	38	1 1/32	115 8
	4	149	15-9	42	7/8	2 2 2 16
	3	150	5-1	17	1 5/16	8 1 24
	2	151	12-8	48 1/2	13/16	1 11 1 12
33	Per CR to Hardhead					17 8 1 16 17 8 1 16
	made 778, 126, 4278.					

(1/73)

Wm. Johnston
6.7.88



© 2021

Lloyd's Register
Foundation

STK 919-0261