

Received at West Hartlepool Office, 28<sup>th</sup> April 1888.

# Lloyd's Register of British and Foreign Shipping.

*S.S. Lowlands*  
*West Hartlepool*

(Report on Vessel No. 6895)

Port *West Hartlepool*

No. 716a

## SHIP FORGINGS OR CASTINGS.

I have to report that the undermentioned Iron or Steel Forgings or Castings, manufactured by *Imp<sup>rs</sup> The Stockton Forge Co.* of *Stockton* for the Vessel No. 336, being built by *Imp<sup>rs</sup> W. Gray & Co.* of *West Hartlepool* have been inspected by me as set forth below, and found to be, so far as can be seen, *sound*

Mark on Forgings.

Lloyd's

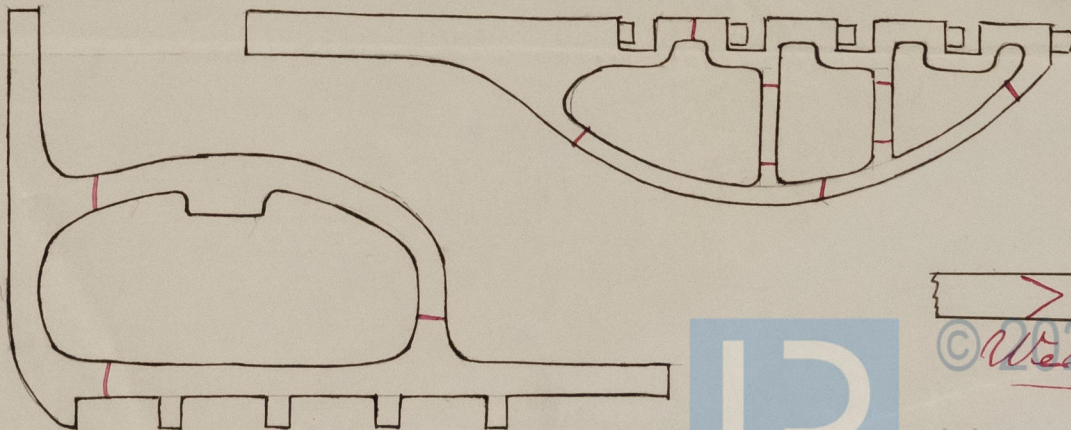
No. 716a  
W.C.

*Wm. Cameron*

*Sunderland 26/4/88*

	STERN FRAME.	RUDDER FRAME.	STEM.
Material* - - - -	<i>Scrap iron</i>	<i>Scrap iron</i>	<i>Scrap iron</i>
How made - - - -	<i>Forged</i>	<i>Forged</i>	<i>Forged</i>
Dimensions - - - -	<i>8 1/2 x 5</i>	<i>6 1/4 - 3 1/4</i>	<i>8 1/2 x 2 1/2</i>
Progress on Inspection -	<i>Forged Smithed</i>	<i>Forged Smithed</i>	<i>Forged</i>
Dates when Inspected	<i>Nov 10-15-28 Dec 7-9-16/87</i>	<i>Feb 1-4-14-21-27 March 1-13-22-28 April 10/88</i>	<i>Dec 9/87</i>

SKETCHES OF FRAMES SHEWING POSITION AND DESCRIPTION OF WELDS OF FORGINGS, OR PARTICULARS OF TESTS APPLIED TO CASTINGS.



*Welds*

Lloyd's Register  
Foundation