

Dec 20/16/87

S. S. Garth Castle 114th Report No 1491

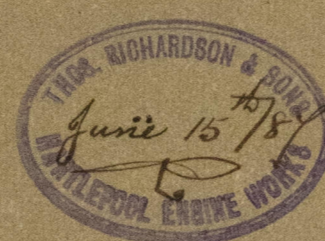
Amended

BOILERS No 844

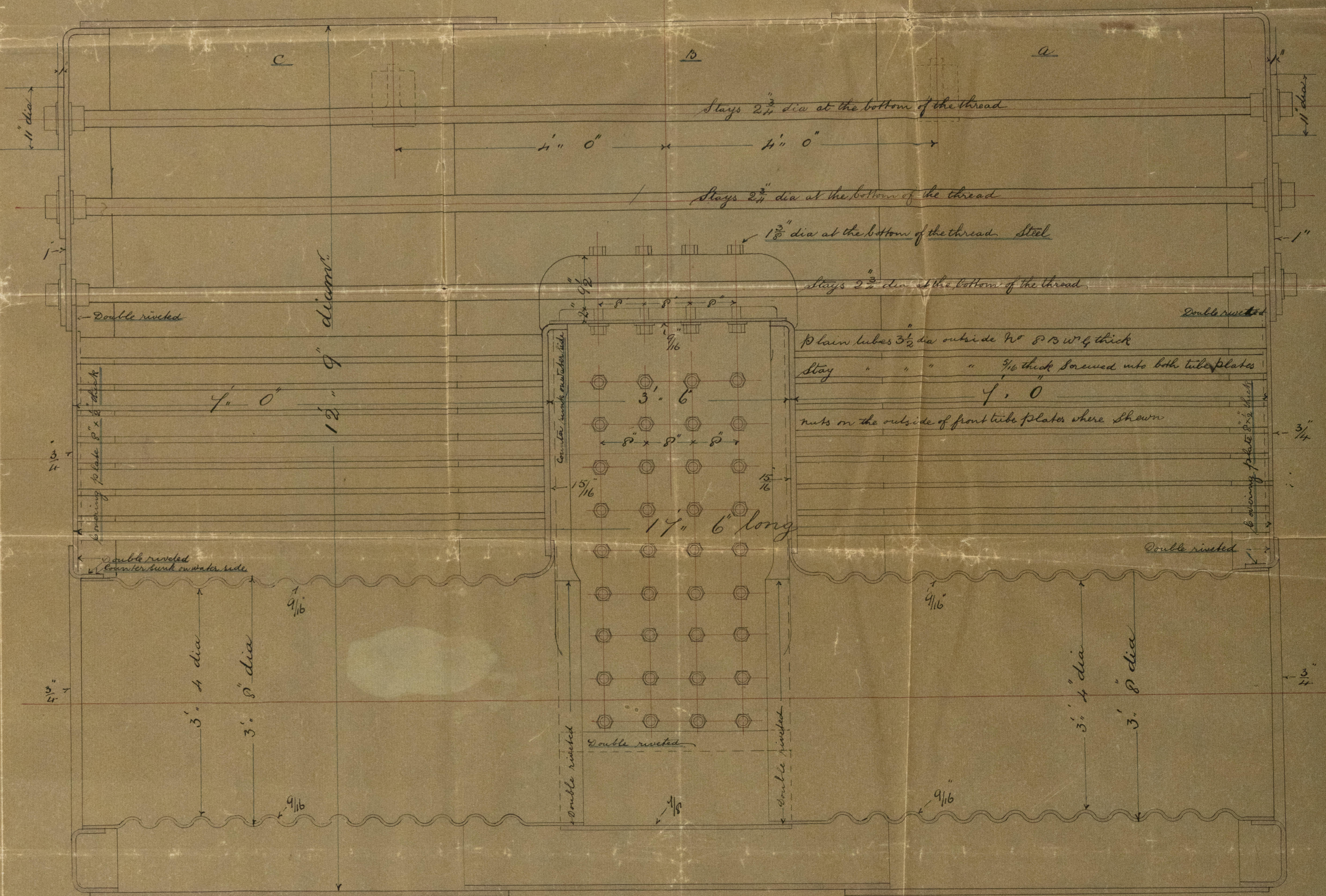
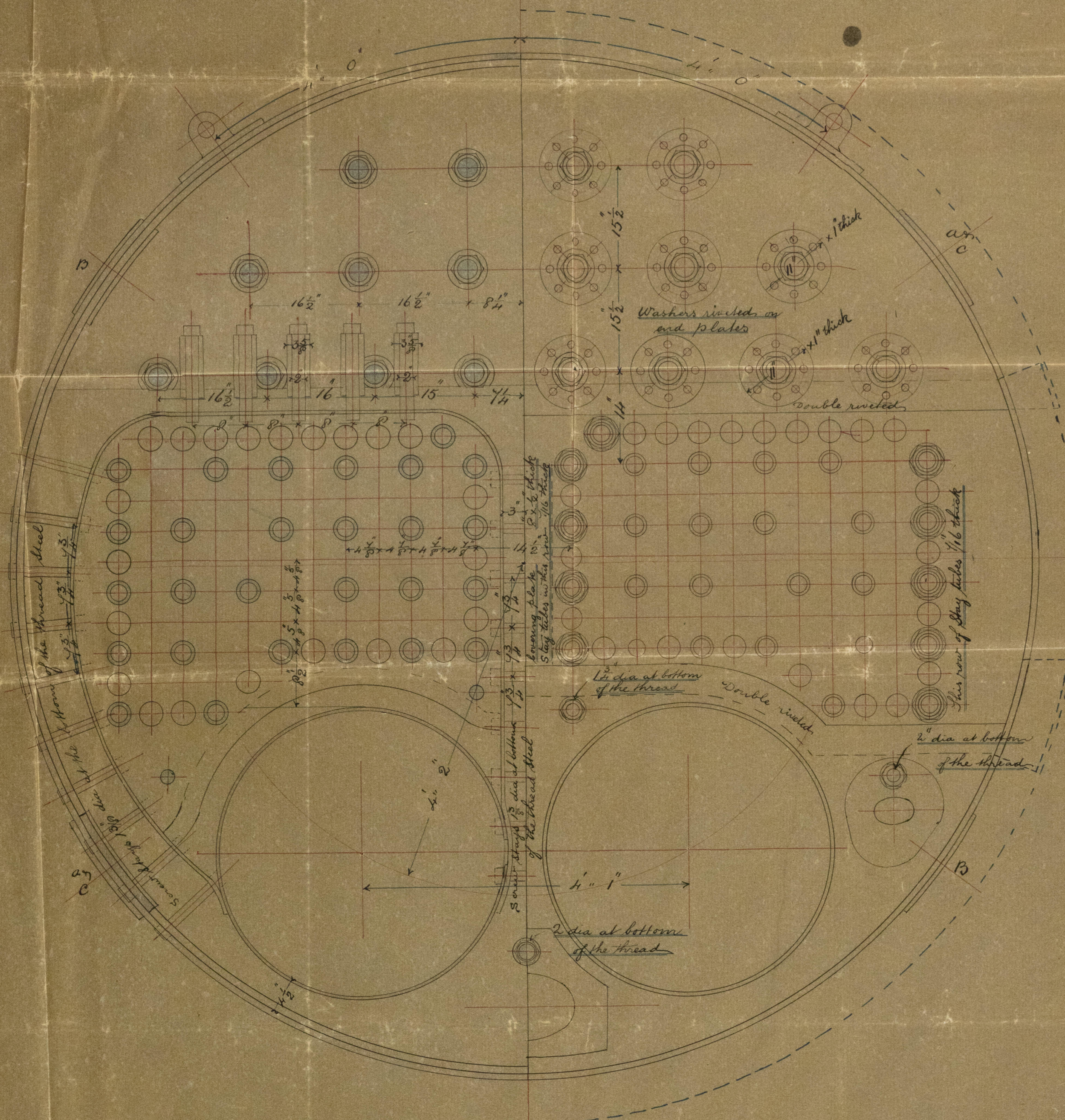
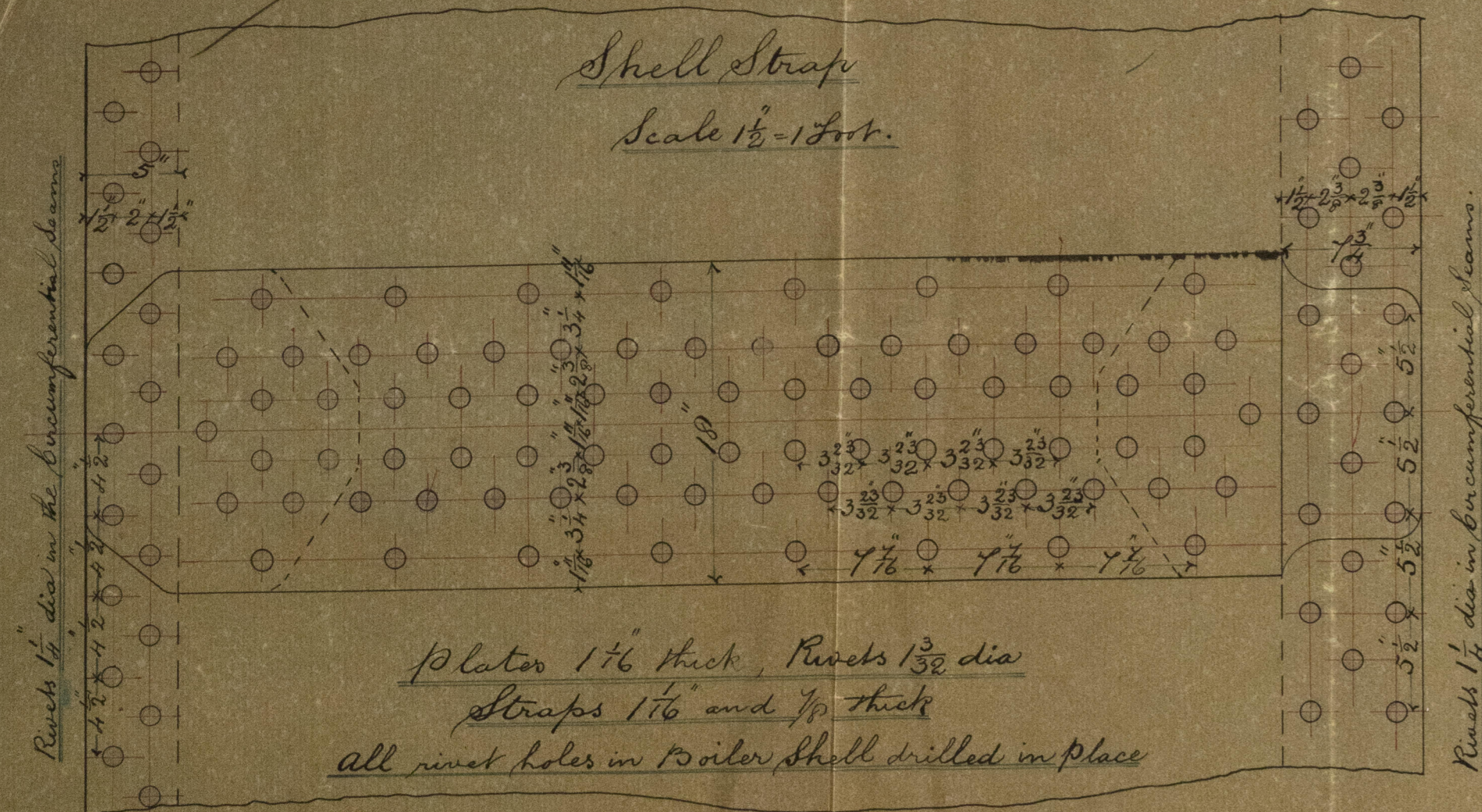
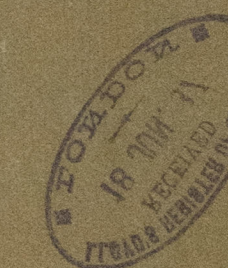
For S. S. Garth Castle

Scale 1" = 1 Foot

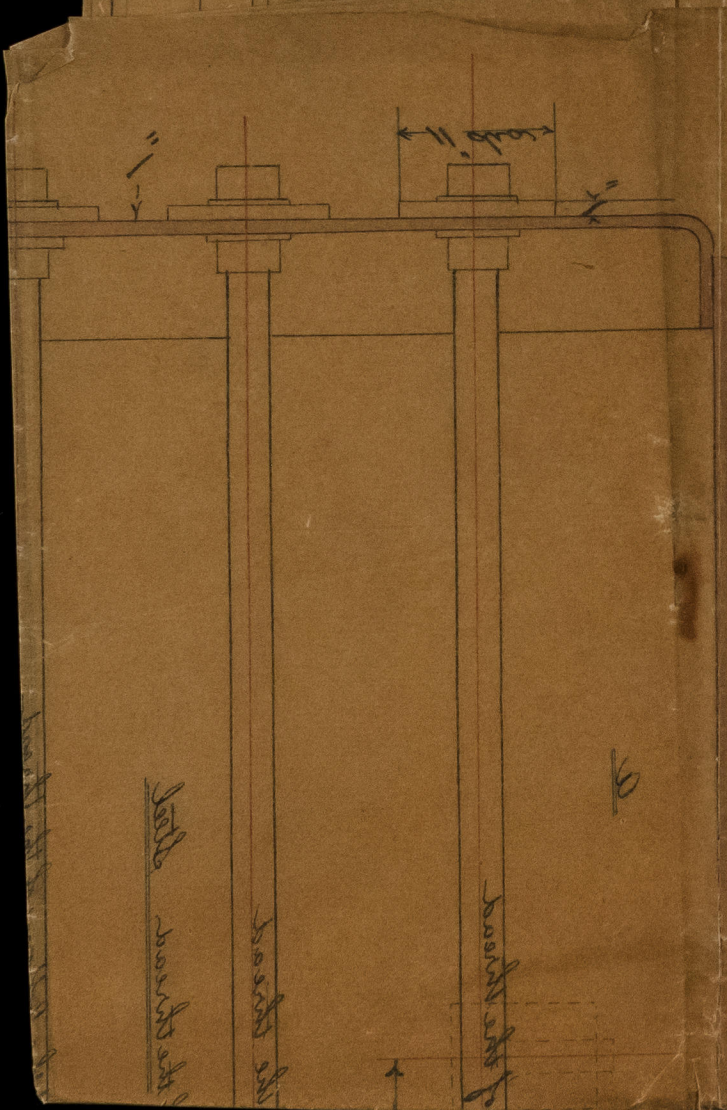
Working Pressure - 150 lbs per square inch



17.6.87



D.P. 20/6/87



Reck to be in the bottom of the hull

S. S. "Glen Castle"



Palates 1 1/2 inch thick
Aluminum 1 1/2 inch thick
all metal plates in contact with



© 2021

Lloyd's Register
 Foundation