

Hand-drawn sketch of a bridge deck structure, showing a cross-section with a central vertical axis. The structure is divided into three main horizontal sections: Bridge Deck, Middle Deck, and Lower Deck. The Bridge Deck is the top section, followed by the Middle Deck, and the Lower Deck at the bottom. The structure is supported by a central vertical axis. Dimensions are given for various parts: Bridge Deck (24 x 7/16), Middle Deck (31 x 9/16), Lower Deck (6 1/2 x 3 x 9/16), and a central vertical dimension of 31 x 9/16. The structure is labeled with 'Bridge Deck', 'Middle Deck', and 'Lower Deck'. The central vertical axis is labeled '31 x 9/16' and 'Space 31 in apart'. The dimensions are given in feet and inches.

Bridge Deck

Middle Deck

Lower Deck

31 x 9/16

Space 31 in apart

24 x 7/16

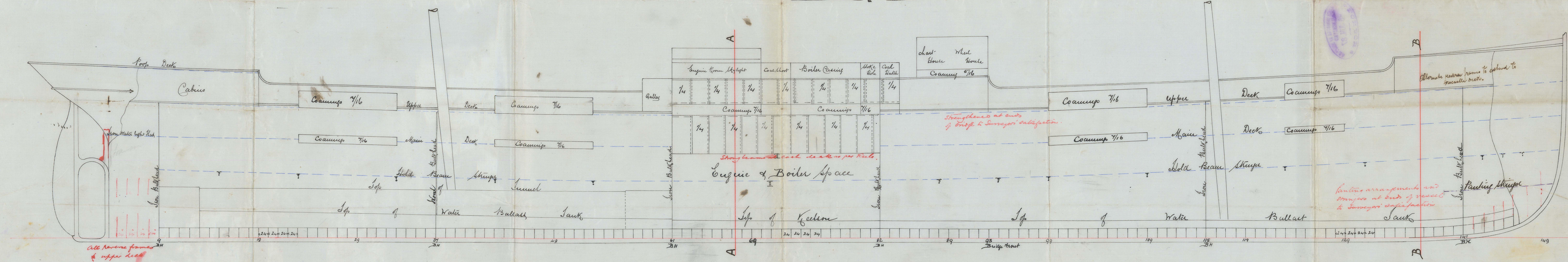
31 x 9/16

6 1/2 x 3 x 9/16

18m

10/10/80

Longitudinal Plan of No 100 S.S.
Scale $\frac{7}{8}$ inch = 1 foot



— Section of Newcastle thro' B. B. —

Supelata 11 x 16 Shrimps 24 x 7/16
Wood Deck 3 in
Bassano 7 1/2 x 7/16
Angles 3 x 3 x 7/16
Wood Deck 4"
Iron Deck.

A circular purple ink stamp. The outer ring contains the text "J. TURNBULL & SON" at the top and "WHITE" at the bottom, separated by small stars. The center of the stamp features the text "IRON SHIP BUILDERS" in a bold, serif font, flanked by decorative horizontal flourishes.

9/10/86
LLOYD'S REGISTER
SHIPPING
R.D.

STK914-0227



© 2021

Lloyd's Register
Foundation