

SS Manitoba W. H. Report No 6398

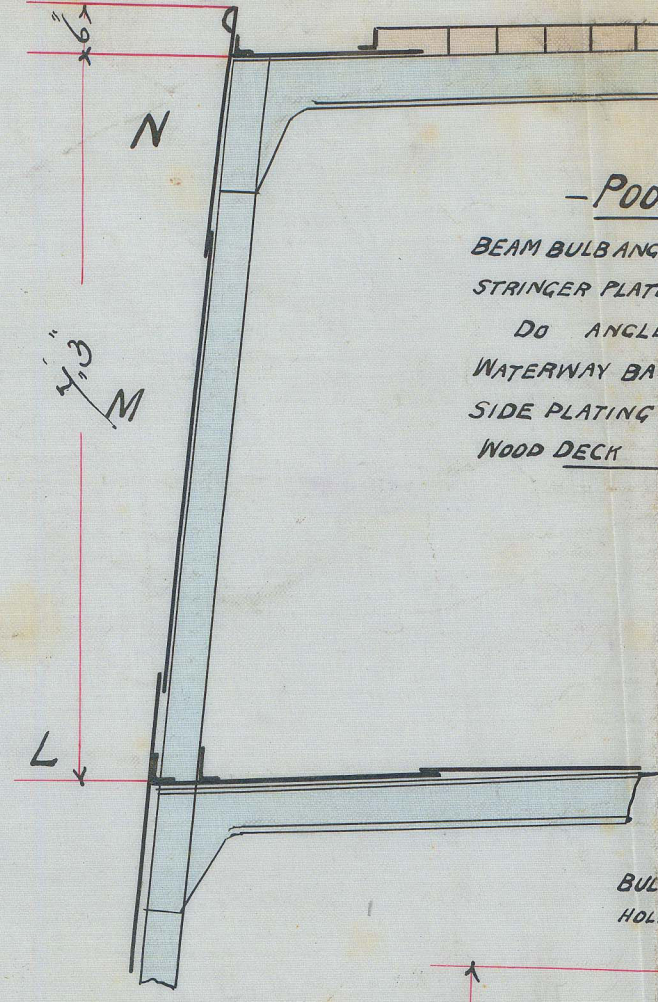
11 OCT. 83

14.10.86

13.11.86

**-DIMENSIONS-**  
 LENGTH BETWEEN PERPS 275.0  
 BEAM EXTREME 37.2  
 DEPTH OF HOLD TO LLOYDS FLOORS 20.7  
 DEPTH TO TANK TOP 19.5

**-LLOYDS NUMERALS-**  
 HALF BREADTH MOULDED 18.6  
 DEPTH OF HOLD & FLOORS 20.7  
 HALF CIRTH 36.6  
 FRAME NO 77.4  
 LENGTH PER RUL 273.6  
 PLATING NO 21220  
 EQUIPMENT NO 23597  
 BEAMS IN LENGTH 7.39 DEPTHS 12.11  
 CLASS 100A1



BULB ANGLE 5.3 x 3/16  
 HOLLOW BEAD 3.1 x 1/2

**-QUARTER DECK-**  
 BEAM BULB ANGLE ON EVERY FRAME 6.3 x 3.20  
 DO BULB AT HATCH END 4.3 x 3.20  
 STRINGER PLATE 3 1/2 x 3/16  
 DO ANGLE 3.3 x 3/16  
 STEEL DECK 3/16 BUTTS DOUBLE RIVETED FOR 1/2 LENGTH SINGLE AT ENDS  
 TEE IRON AT CENTRE 6.1 x 1/2 LUGS 3.3 x 3/16

**-CABIN SOLE-**  
 BEAM BULB ON ALTERNATE FRAMES 9.9 x 3/16  
 DO ANGLE 3.3 x 3/16  
 DO BULB AT HATCH ENDS 10.3 x 3/16  
 DO ANGLE 4.3 x 3/16  
 DO COVERING PLATES 8.3 x 3/16  
 DO CUSSET PLATES 6.0 x 2.3 x 3/16  
 STRINGER PLATE 3 1/2 x 3/16  
 DO ANGLE 4.3 x 3/16  
 DO INNER ANGLES IN WAY OF HATCHES 3.3 x 3/16  
 FACE PLATE DO 7.3 x 3/16  
 TIE BARS AT CENTRE 6.3 x 3/16 TEE IRON

**-MAIN DECK-**  
 BEAM BULB ANGLE EVERY FRAME 6.3 x 3.20  
 DO BULB AT HATCH ENDS 4.3 x 3.20  
 DO BULB IN WAY OF HATCH FRAMES 4.3 x 3.20  
 STRINGER PLATE 3 1/2 x 3/16  
 DO ANGLE 3.3 x 3/16  
 STEEL DECK 3/16 BUTTS DOUBLE RIVETED FOR 1/2 LENGTH SINGLE AT ENDS  
 TEE IRON AT CENTRE 6.1 x 1/2 LUGS 3.3 x 3/16

**FRAMES** SECTION 5'-3" FOR 1/2 LENGTH AMIDS FRAME ANGLES 5.3 x 3/16 FOR 1/2 LENGTH 5.3 x 3/16 AT ENDS  
 SPACED 24" INCHES APART CENTRE & CENTRE. REVERSE FRAMES AT ENDS AS PER RULE  
 FRAMES ON FLOORS 3.3 x 3/16 ALTERNATE FRAMES BULB ANGLE 5.3 x 3/16  
 REVERSE BARS IN TANK 3.3 x 3/16. Single in C.V. space.  
 FLOORS 3.3 x 3/16 ON ALTERNATE FRAMES 3/16 AT ENDS  
 BULKHEADS UPPER PLATING 1/2 LOWER PLATING 1/2 STIFFENERS 5.3 x 3/16 (Brown)  
 SPACED 30" APART VERTICALLY & 48" HORIZONTALLY  
 FORGINGS STEEN 4.3 x 3/16 REDUCED TO 3.3 x 3/16 AT HEAD SCREEN FRAME 4.3 x 3/16  
 RUDDER 7" DIA AT HEAD 3 1/2" DIA AT HELM PINS TO BE 1/2" DIA  
 TANK TOP CENTRE PLATE 30 x 30 BUTTS DOUBLE RIVETED  
 TANK TOP PLATES AS PER PLAN BUTTS DOUBLE RIVETED FOR 1/2 LENGTH AMIDS  
 TANK SIDE PLATES 3 1/2 x 3/16 LAPS DOUBLE RIVETED TINES 20 ANGLE 3.3 x 3/16  
 CENTRE GIRDER PLATES 3.3 x 3/16 TO 30 TREBLE RIVETED LAPS TINES 20 ON ALTERNATE FRAMES  
 ANGLES 1.4 x 1/2 TO 20 LUGS 3.3 x 3/16  
 TANK INTERCOSTAL PLATES 30 ANGLE & VERTICAL BARS 3.3 x 3/16  
 WEB FRAMES 15 x 30 SPACED AS PER PROFILE  
 INTERCOSTAL STRINGERS PLATES 15 x 30 ANGLE 3.3 x 3/16  
 DIAMOND PLATES 2.6 x 1.6 x 30 CUSSET PLATES TO TANK SIDE 1.8 x 1.8 x 30  
 BOSS PLATES 1/2 THICK  
 BUTTS STRAPS OF ALL SHELL 3/16 THICKER THAN PLATES & TREBLE RIVETED FOR 1/2 LENGTH AMIDS.  
 REMAINING BUTTS STRAPS 3/16 THICKER THAN PLATES. DOUBLE BUTTS STRAPS TO MAIN & QUARTER DECK  
 STRINGERS FOR 1/2 LENGTH AMIDS  
 SHELL PLATING CONNECTED TO SCREEN FRAME TO BE SAME THICKNESS AS AMIDS  
 PILLARS HOLD PILLARS 1/2 TUBE, DECK PILLARS 1/2 TUBE  
 Rivets in lattice of shell plating & stringers spaced not more than 3/16 apart.

SCALE 1" = 1 FOOT

Edw. W. Withy & Co  
 IRON & STEEL SHIP BUILDERS,  
 SHIP REPAIRERS &  
 WEST HARTLEPOOL.  
 Drawing No 10650  
 Sept 11. 1886

No 142



Lloyd's Register  
Foundation