

Dr. G. W. H. P. L.  
1879/6

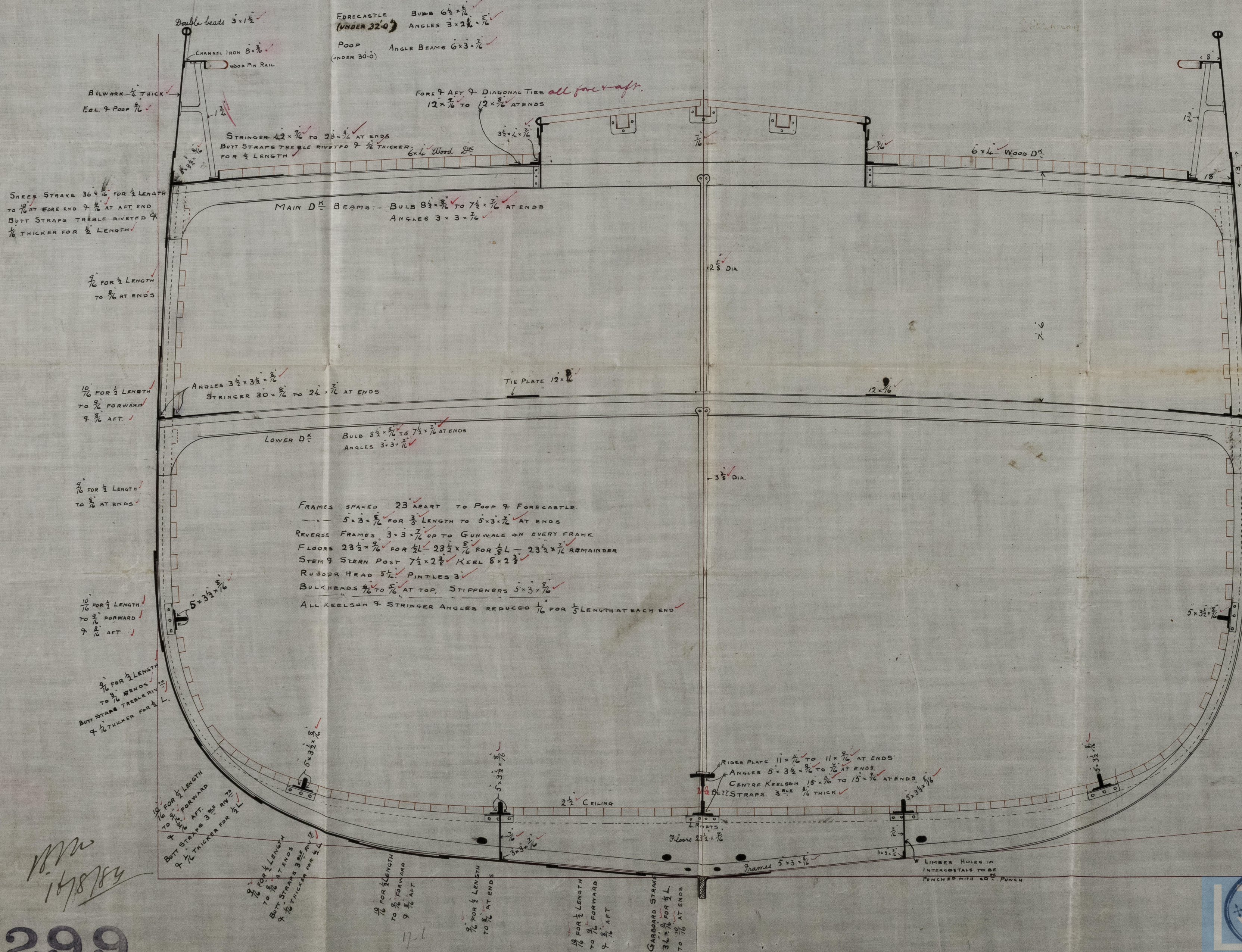
SCALE  $\frac{1}{2}$  INCH = 1 FOOT

CLASS 100 A1, LLOYDS	BUILDERS	LOADS
LENGTH REGISTERED	215'-0"	
BREADTH EXTREME	205'-0"	203'-75"
DEPTH OF HOLD	35'-3"	35'-08"
MOULDED	20'-11"	22'-88"
N° FOR FRAMES	22'-2 1/2"	22'-88"
PLATING	75'-82"	75'-82"
EQUIPMENT	154'-48'-32"	
DEPTH TO LENGTH	164'-78'-20"	
BREADTH	8'-90"	
		<div> <div>35'-40"</div> <div>17'-54"</div> <div>22'-88"</div> <div>75'-82"</div> </div>
		<div> <div>GIRTH</div> <div>BREADTH</div> <div>DEPTH</div> </div>

— EQUIPMENT —		
2	BOWER ANCHORS EACH	30 CWT.
1	—	25½
1	STREAM	9½
	KEDGE	4¾
	—	2½
270	FATHOMS	STUD CHAIN CABLE
75	—	STREAM
96	—	HEMP TOWLINE
90	—	WARPS
90	—	—

1	3/4
1	15/16
1	10½
1	9
1	5½

}	EX STOCK
---	----------



17.5  
17.5  
 $\frac{18^7}{17.5} = 1^2$

West Hill  
J.P.  
1981

