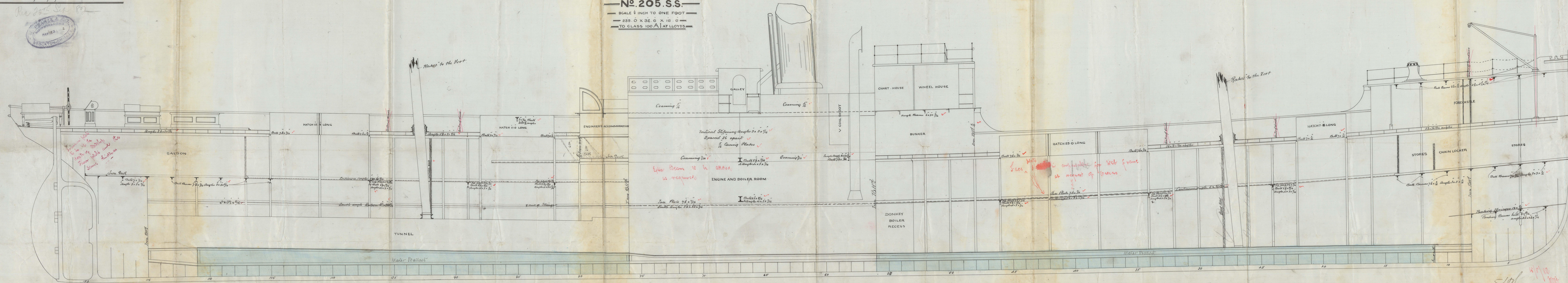


Set to H. Appl
1849/52. — *Leyds Demunsons* —

Length from apex part of Stem	283
to first part of Pinnae	
and to middle	92
Depth of Stem	18
12.9 Depth to Length = 22 to 13	
7.9 Breadth to Length = 74 to 43	

—FOR—
—No. 205. S.S.—
—SCALE $\frac{1}{4}$ INCH TO ONE FOOT—
—235.0 X 32.6 X 16.0—
—TO CLASS 100 A1 AT LLOYDS.—

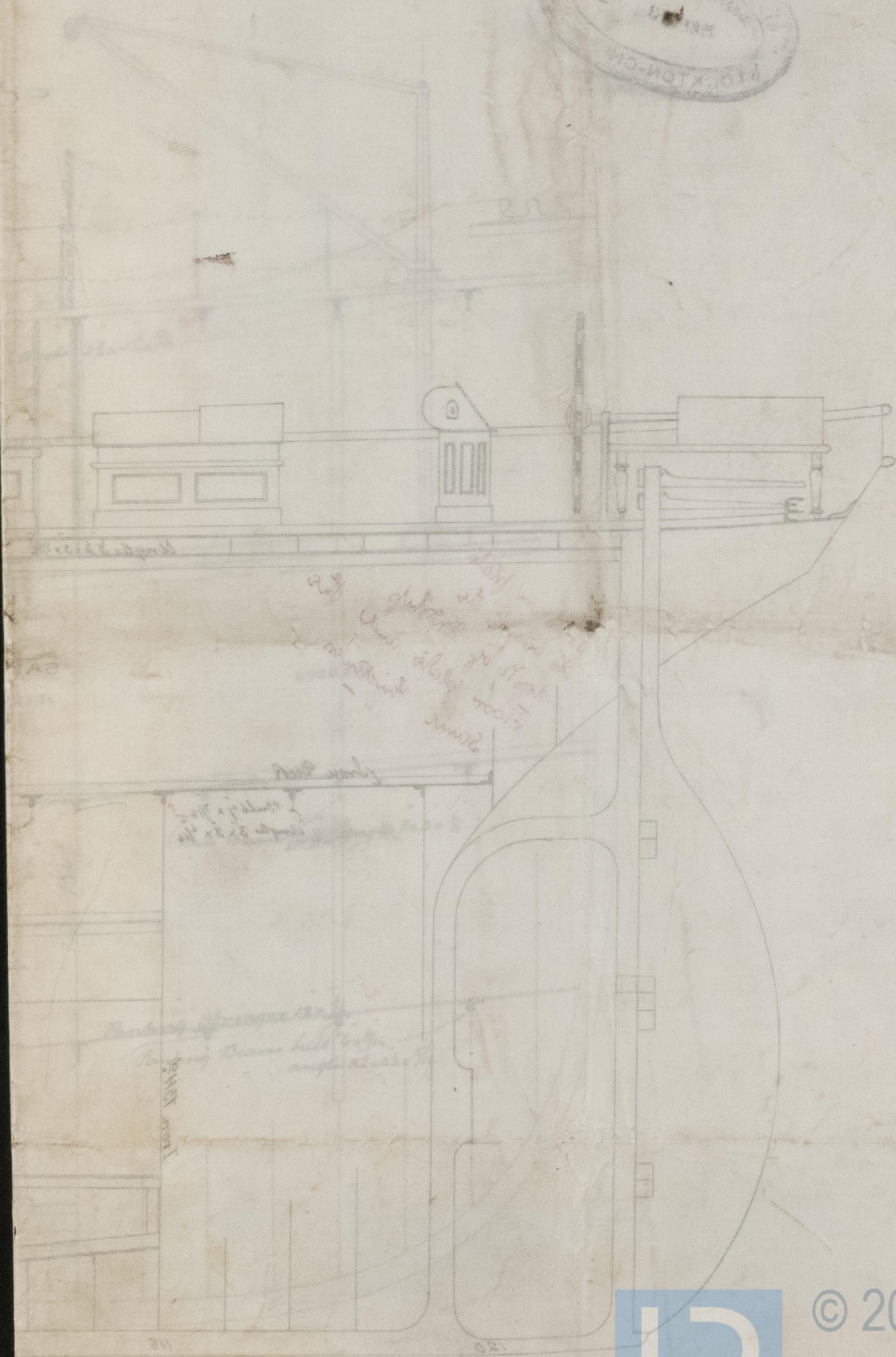


© 2021
Lloyd's Register
Foundation

Lloyds

26th to 4th April 1919
 Lloyd's Register

Graph from after part of ship
 to fore part of ship
 Graph from
 Graph from
 Graph from



STK907-0216



© 2021
 Lloyd's Register
 Foundation