

J. H. Hoord, Prabant, W. H. C. Report No. 5000.

Midship Section

IRON SCREW STEAMER

DIMENSIONS.		FEET.	FATHOMS.
LENGTH OVER ALL		310.	0.
Do. L.P.		300.	0.
BREADTH		40.	0.
DEPTH IN HOLD.		23.	9 1/2.
Do. MOULDED		26.	6.
TONNAGE O.M.		2348.	
GROSS POWER		250.	
CROSS		100.	2 1/2.

Equipment

2 Bowers	lx of Stock	24 cut	✓
1	"	29	✓
1 Stream	"	10 ³ / ₄	✓
1 Warp	"	5 ¹ / ₂	✓
1	"	2 ¹ / ₂	✓
270 fathoms	1 ¹¹ / ₁₆ Stud chain	cut	✓
75	1 ³ / ₈ Stream chain		
100	12 Fathom		
90	4 ¹ / ₂ Warp		
90	8		

~~20.00~~
 42.83
~~27.29~~
 90.12

83. Pick for Names
298.33 Length
24797. 1896 Plate
29573. Equipments etc.

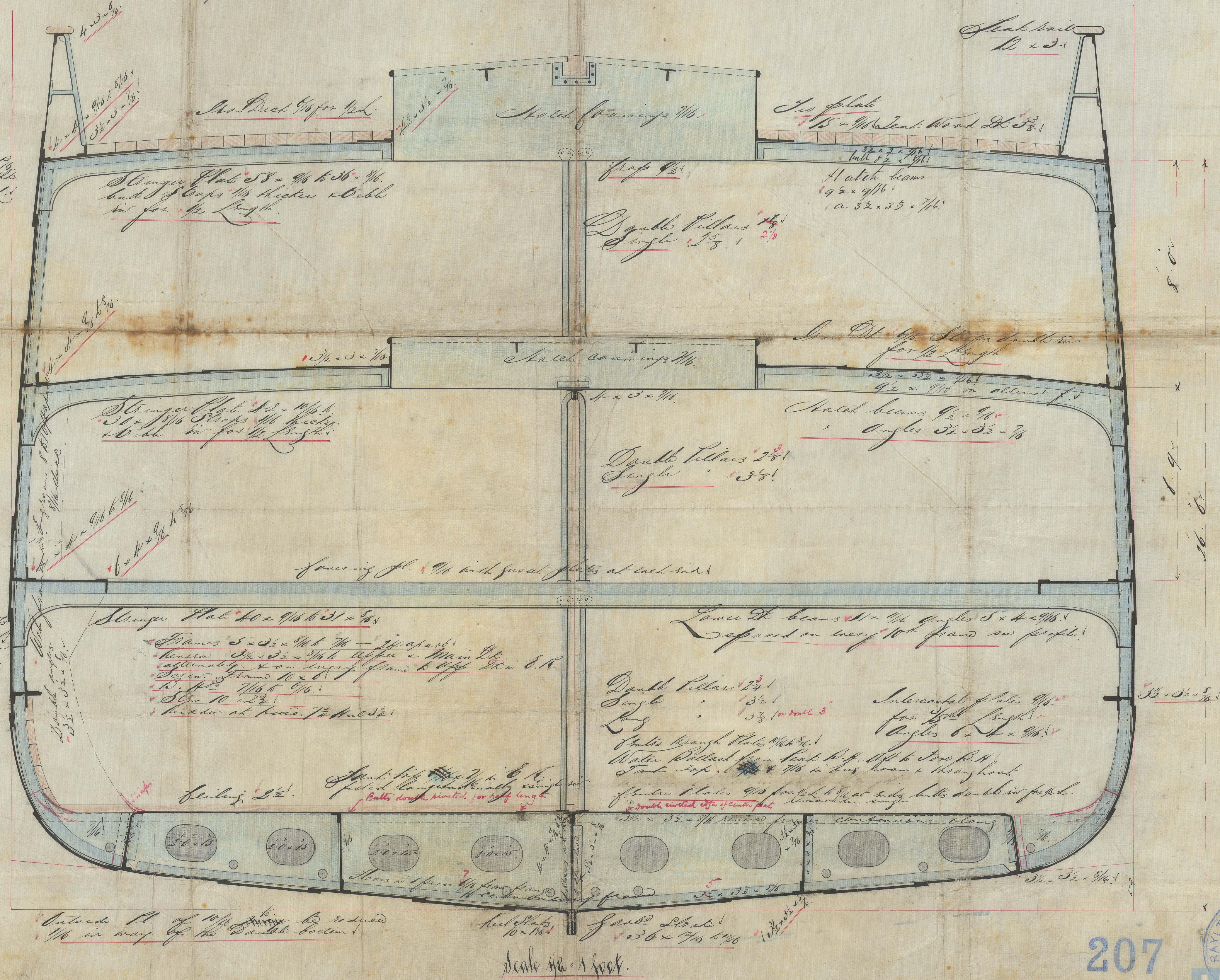
Proportions	
5 lb Lard	10. 93.
13. " Milk	15. 46.
13. " "	7. 48.

Shoe Stalk 40 x $\frac{1}{8}$ lb
to w/8 Straps $\frac{1}{8}$ lb
+ Calk w/ for $\frac{1}{2}$ L.

Shed Plates
1/16 to 9/16.

Shore State
Main & Upper
Dk S. Shager
& S. Shakes
round hilps to
hand with in cuts
& 1/16 thicker for 2.5

Bapt. J. M. H. L.
+ C. H. L. W. L.



14/3/82



207