

A.B. Mosser, N. H. Report No. 4921.

Principal Dimensions

| | |
|-----------------|-------|
| LENGTH OVER ALL | 311-0 |
| Do. B. P. | 26-3 |
| BREADTH | 24-8 |
| DEPTH IN HOLD | 28-11 |
| Do. MOULDED | |
| TONNAGE, GROSS | |
| Do. NET | |

SCALE 1/2 INCH TO 1 FOOT

Class 100 A Lloyd's - 3 Decks Rule

Equipment if enclosed erection on deck

| | |
|-------------|--------------------------|
| 2 Bowers | 32 Cwt. ex stock |
| 1 do. | 27 1/2 " |
| 1 Steam | 10 1/2 " |
| 1 Hedge | 5 1/4 " |
| 1 do. | 2 1/2 " |
| 270 Fathoms | 1 1/2 " Bird Chain Cable |
| 75 " | 1 1/2 " Steam Chain |
| 90 " | 12 " Towline |
| 90 " | 9 1/2 " Warp |
| 90 " | 7 1/2 " do. |

Scantling Numbers

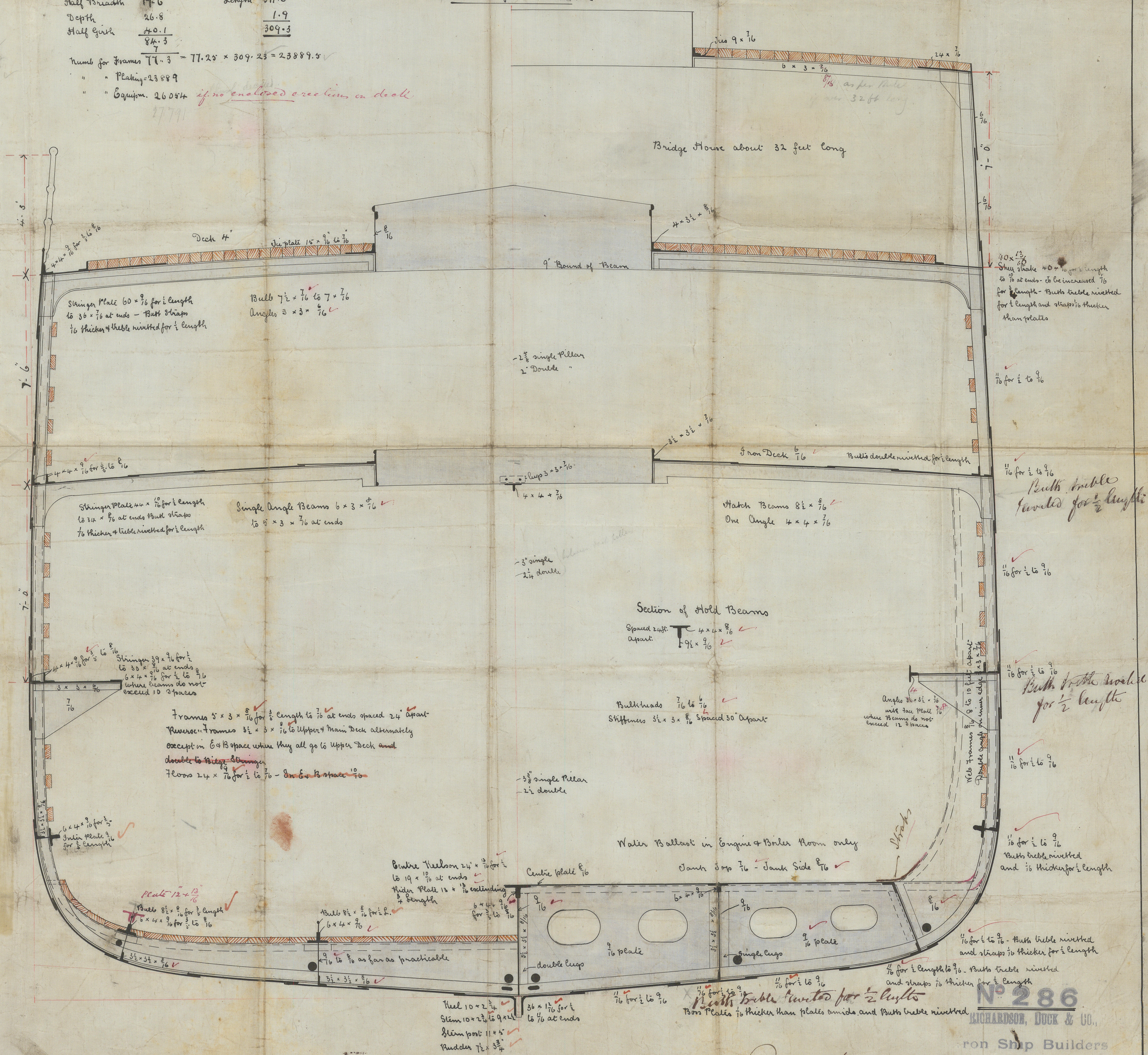
| | | | |
|--------------|------|--------|-------|
| Half Breadth | 17-6 | Length | 311-0 |
| Depth | 26-8 | | 1-9 |
| Half Girth | 40-1 | | 309-3 |
| | 84-3 | | |

Nums for Frames 71-3 = 77.25 x 309.25 = 23889.5

" " Plating = 23889

" " Equipm. 26054 if no enclosed erection on deck

Proportions
Depth in Length 11.5
do. to M.D. 16.1
Breadth in Length 8.8



No 286

RICHARDSON, DUCK & CO.,

Iron Ship Builders

FOCKTON-ON-TEES © 2021