

S.S. N<sup>o</sup> 37,

MIDSHIP SECTION

SCALE  $\frac{1}{2}$  OF AN INCH = 1 FOOT

PRINCIPAL - DIMENSIONS

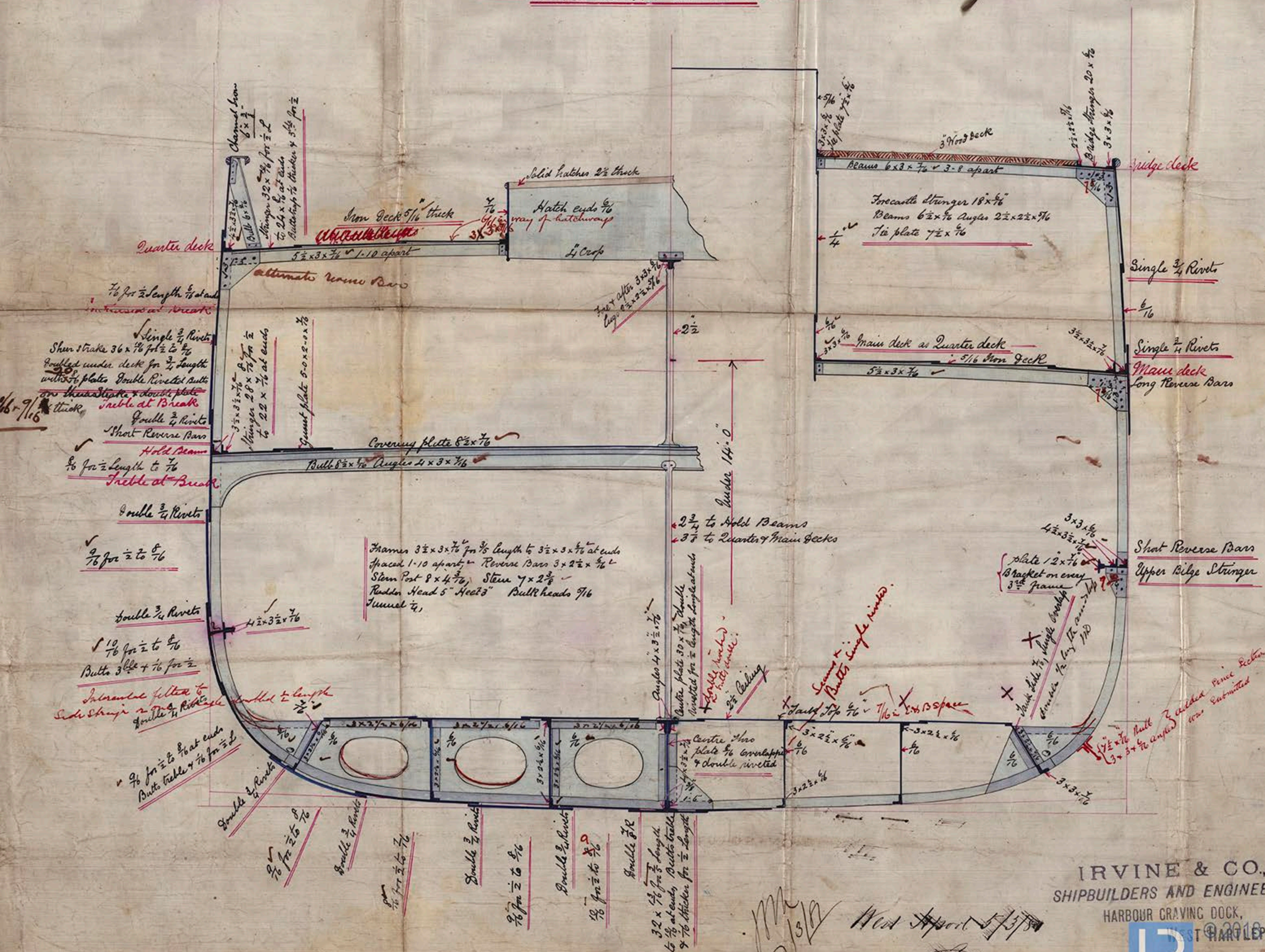
LENGTH OVERALL	
LENGTH B.P.	223' 9"
BREADTH EXTREME	31' 6"
BREADTH MOULDED	31' 4"
DEPTH MOULDED	15' 0"
DEPTH OF HOLD	13' 11"
NOMINAL HORSE POWER	
TONNAGE O.M.	

LLOYDS - NUMBERS

$\frac{1}{2}$ BEAM	15' 8"
DEPTH	15' 4"
GIRTH	27' 10"
FRAMES NUMBER	58' 10"
LLOYDS LENGTH	222' 3"
PLATING NUMBER	13077-19
EQUIPMENT NUMBER	14384-90

7 AND  $7\frac{1}{2}$  BEAMS IN LENGTH 14 AND UNDER 15 DEPTHS TO LENGTH

CLASS 100 AAT LLOYDS



IRVINE & CO.,  
SHIPBUILDERS AND ENGINEERS,  
HARBOUR GRAVING DOCK,  
WEST HARTLEPOOL.



Lloyd's Register  
Foundation