

624
 11
 LONDON

HOLD SUCTIONS		
N° 1 HOLD	2 SUCTIONS	3" DIAM
N° 2 HOLD	2 SUCTIONS	3" DIAM
N° 3 HOLD	1 SUCTION	3" DIAM
TUNNEL WELL & AFTER PK		

HAND PUMPS		
N° 1 HOLD	2 HAND PUMPS	5" DIAM
N° 2 HOLD	2 HAND PUMPS	5" DIAM
N° 3 HOLD	1 HAND PUMP	5" DIAM
FORE PEAK	1 HAND PUMP	3" DIAM

SS N° 546 & 7

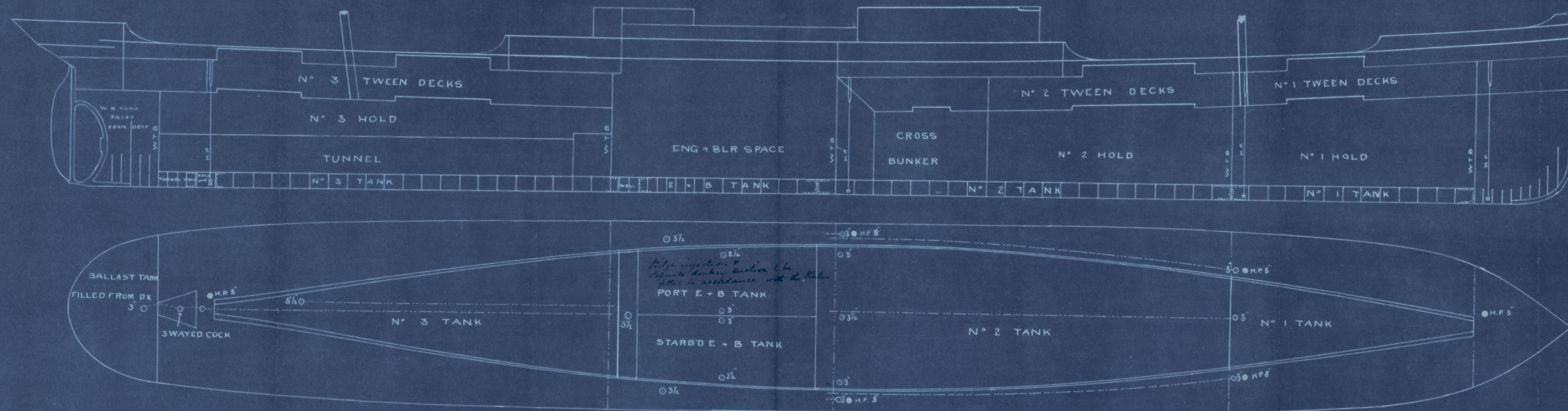
SCALE 1/16" = 1 FT

TONNAGE UNDER DECK
2200 TONS

IN E + B SPACE
1 CENTRE SUCTION 3 1/2" DIAM
2 WING SUCTIONS 3 1/2" DIAM

TANK SUCTIONS

N° 1 TANK	1 CENTRE	3" DIAM
N° 2 TANK	1 CENTRE	3 1/2" DIAM
N° 2 TANK	2 WINGS	3" DIAM
E + B TANK	1 CENTRE	3" DIAM
PORT SIDE	1 WING	2 1/2" DIAM
E + B TANK	1 CENTRE	3" DIAM
STBD SIDE	1 WING	2 1/2" DIAM
N° 3 TANK	1 CENTRE	3 1/2" DIAM



JAMES LAING

DEPTFORD YARDS

SUNDERLAND

OCT/95

William L. Shaw
 4-11-95



Lloyd's Register
 Foundation



J. Laming

Nos 546 & 7

Pumping plan

UNITALIA, UNIVOTI

Nos 546.

Sld Rpt N° 18201.

N° 547. "Amboli"

Sld N° 18400.

SLO999-0183



© 2021

Lloyd's Register
Foundation