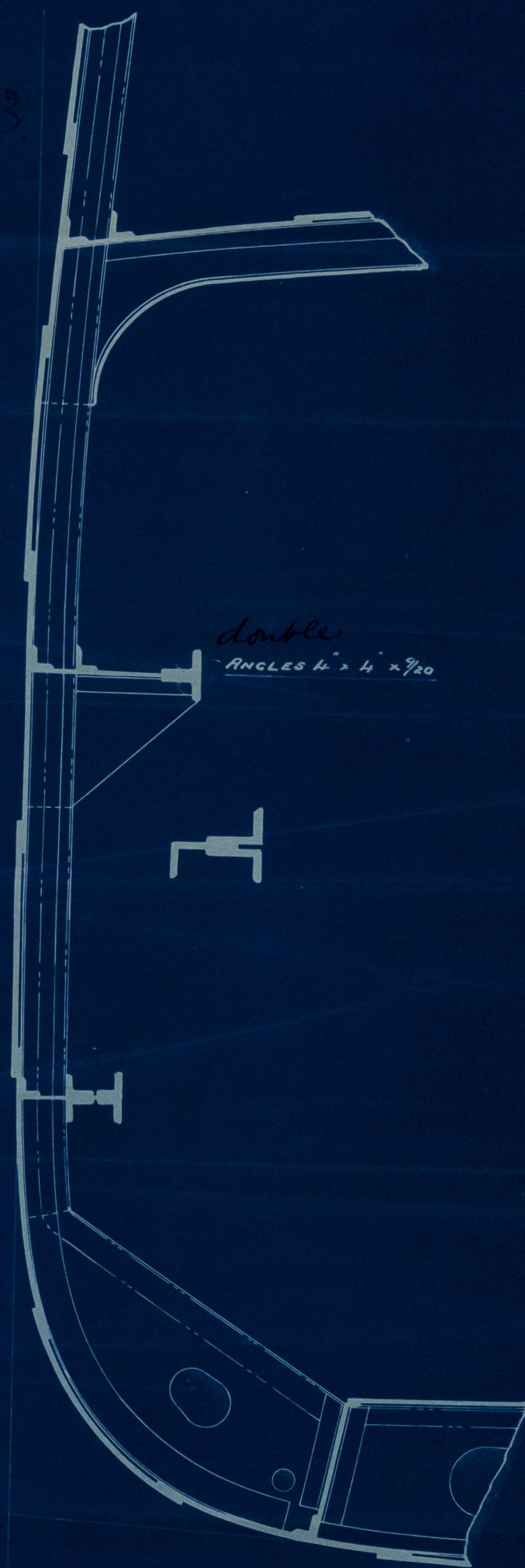


— ALTERATION IN STRINGER. S.S. N° 156. —

— SCALE  $\frac{1}{2}$ " = 1 FOOT. —

26.7.93.



J.H.L.  
26/7/93

— BARTRAM, HASWELL & CO —

— IRON & STEEL SHIPBUILDERS —

— SOUTH DOCK —

— SUNDERLAND. —



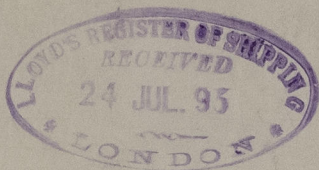
Lloyd's Register  
Foundation

SLD990-0019



MESSRS BARTRAM HASWELL & CO

S. S. N<sup>o</sup> 156



S. S. "KIRKDALE"

Sunderland Report N<sup>o</sup>



© 2021

Lloyd's Register  
Foundation

SLD990-0017