

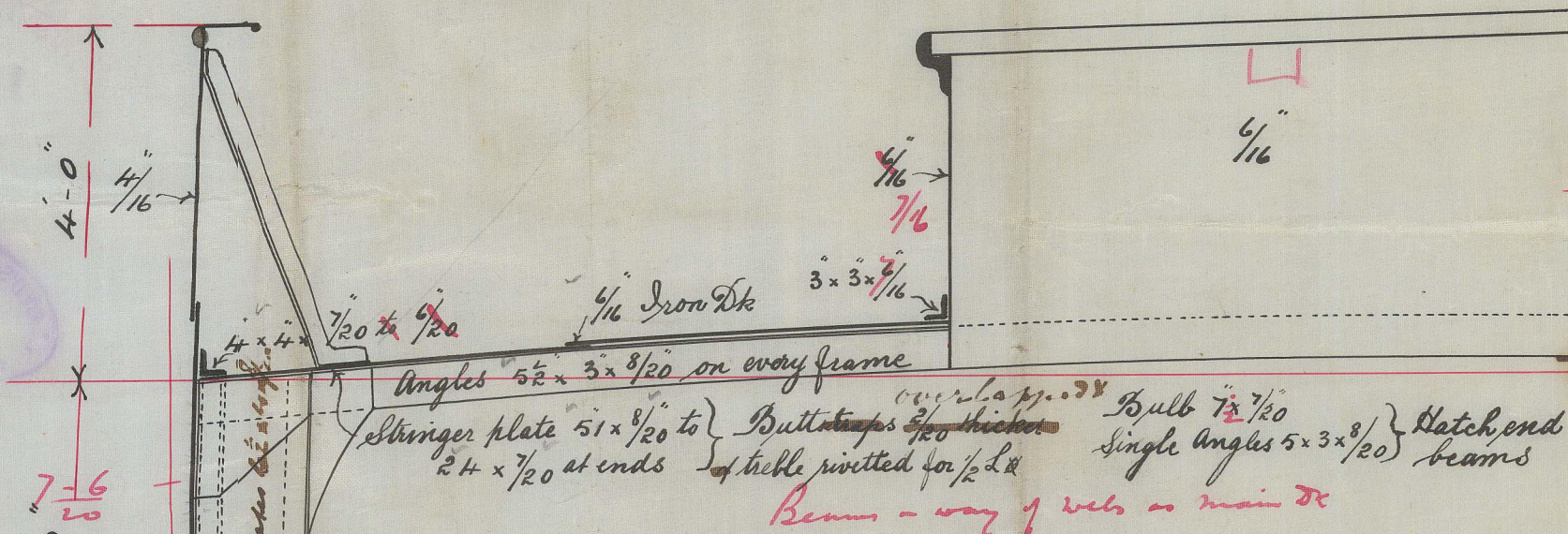
MIDSHIP SECTION FOR N° 90.S.S.

Length B.P. 207' 2"
 Beam extreme 31' 7 3/4"
 Depth moulded at side 15' 4"
 Depth to cellular bottom 13' 2 3/4"

CLASS 100.A.1

Scale 1/2" = 1 Foot.

SECTION THRU QUARTER DECK



TOPGALLANT FORECASTLE

Stringer plate 21 x 1/4
 Bar 3 x 3 x 1/4
 Beams 4 x 3 x 1/4 on every frame (Bull, under windlass)
 Shell 5/16

BULKHEADS

Lower half 1/4
 Upper 1/4
 All stiffeners 4 x 3 x 1/4 and
 no columns but stiffeners

LLOYD'S NUMBERS

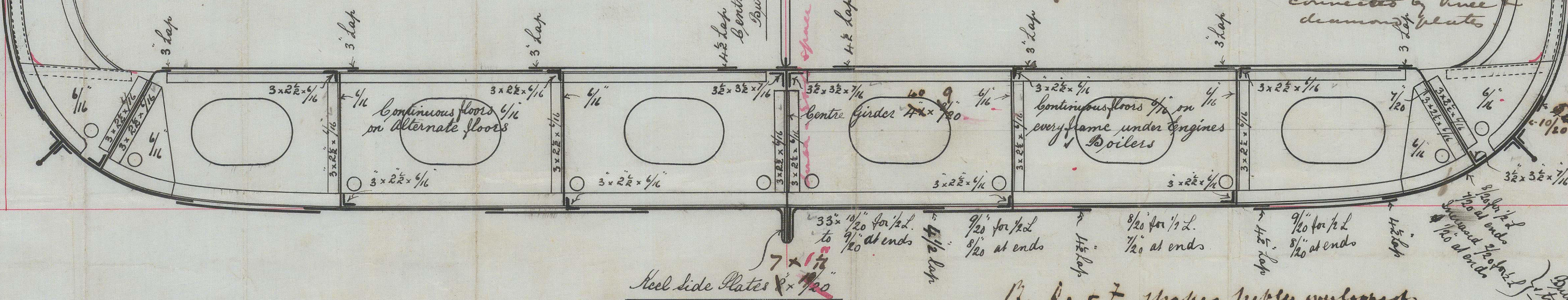
Beam 15.75
 Girth 29.25
 Depth 15.97
 60.97
 206.41-206
 12584-12559-82 PLATING N°

PROPORTIONS

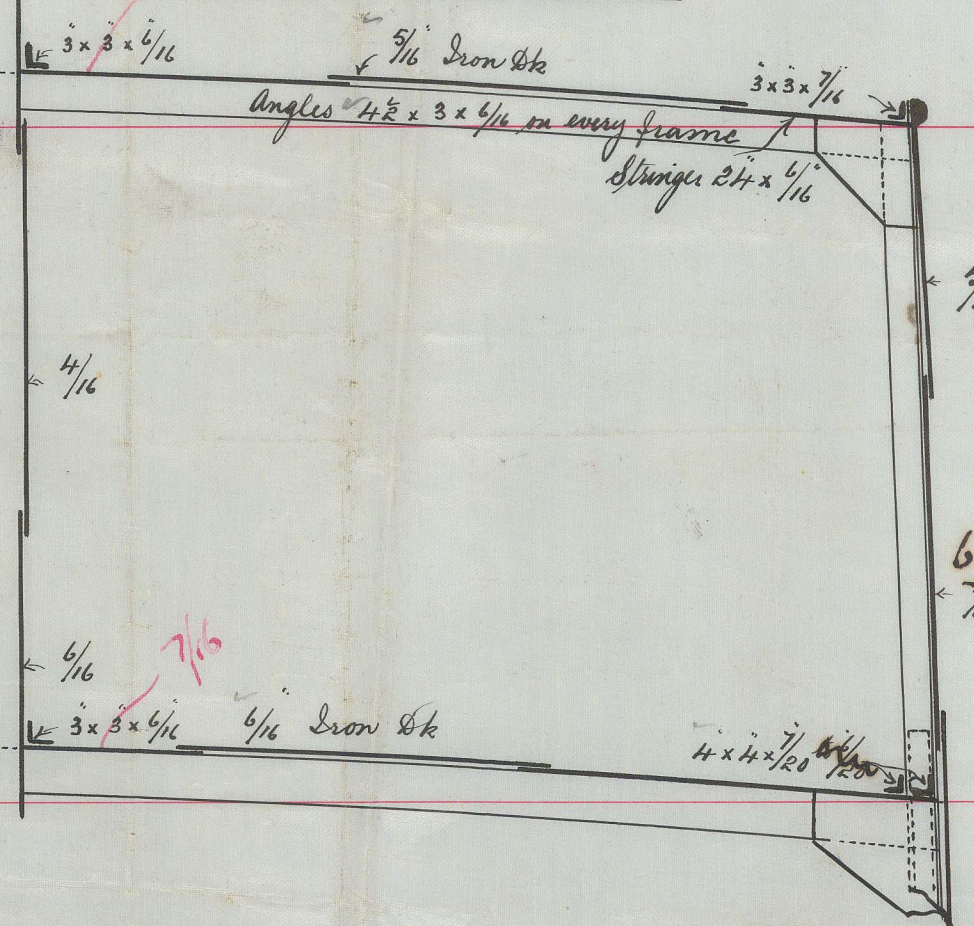
UNDER 13 DEPTHS 12.92
 " 7 BREADTHS 6.85

FORGINGS

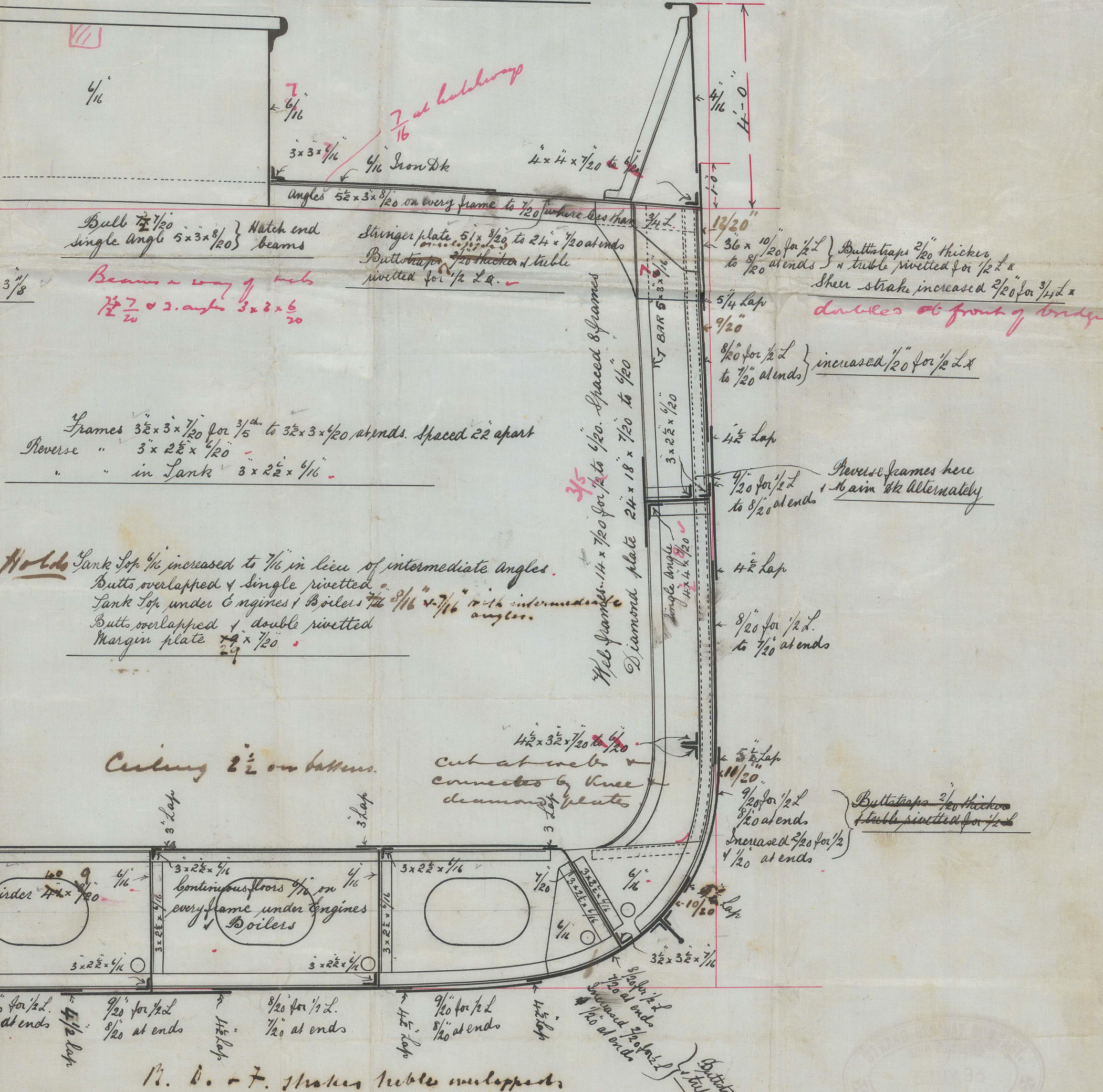
Keel composite 7 x 4 3/4
 Sternpost 7 x 4 3/4
 Stern 7 x 2 1/4
 Rudder head 5
 Keel & pintles 3



SECTION THRU BRIDGE



SECTION THRU MAIN DECK



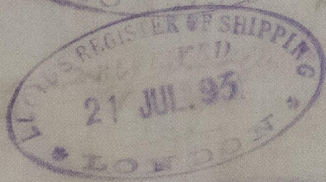
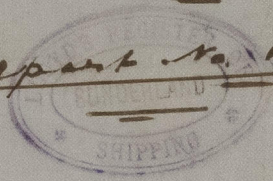
"Mimi" v. s.

Strand Slipway
Company

No. 90

friendship rather.

Report No. 17171



SLD989-0018

Lloyd's Register
Foundation