

Dec. 12-12-92

GEORGE OLARK, ENGINEER
SOUTHWICK ENGINE WORKS
SUNDERLAND

BOILERS NO 57S. 2 OFF.

WORKING PRESSURE 160 LBS PER SQUARE INCH

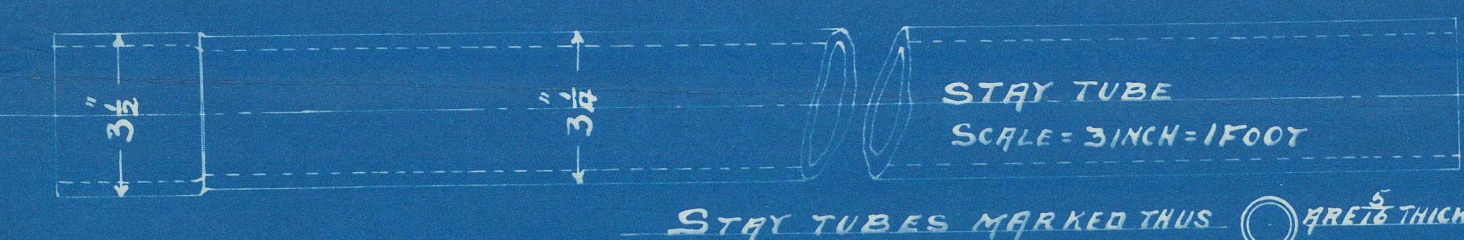
ALL PLATES, MAIN STAYS, & RIVETS OF STEEL, TUBES & SCREW STAYS OF IRON, TUBES LAP WELDED

ALL HOLES DRILLED IN POSITION

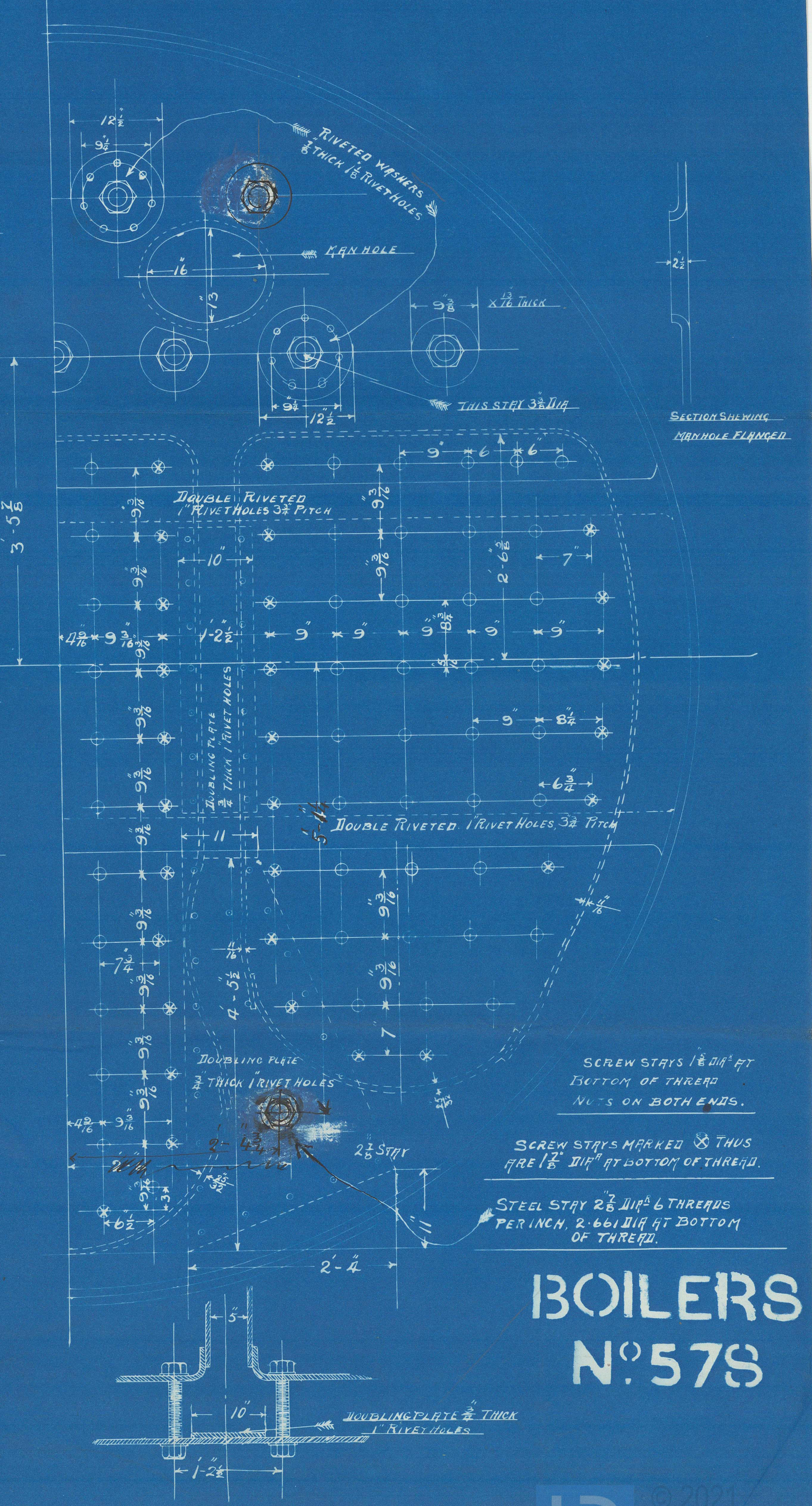
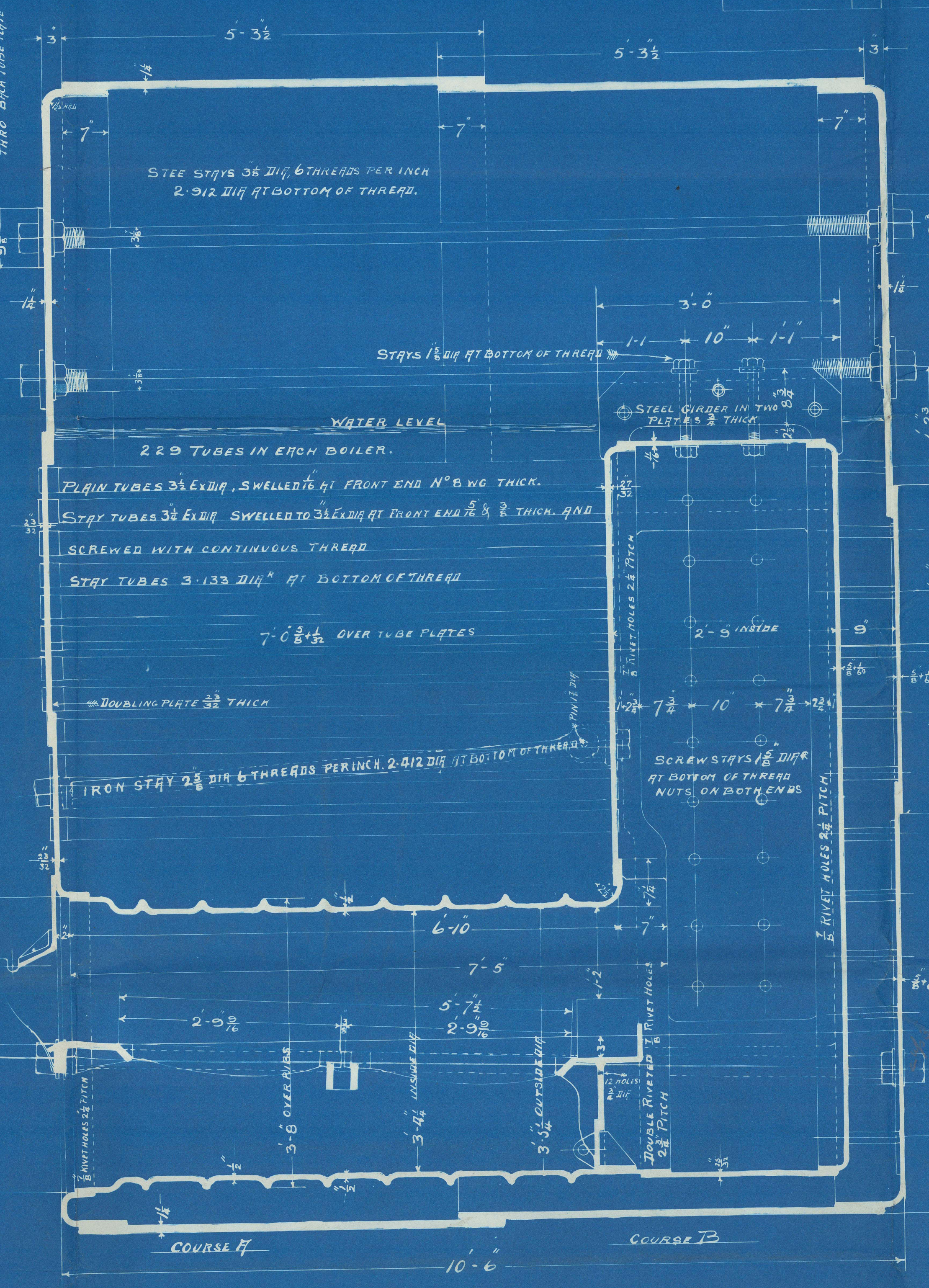
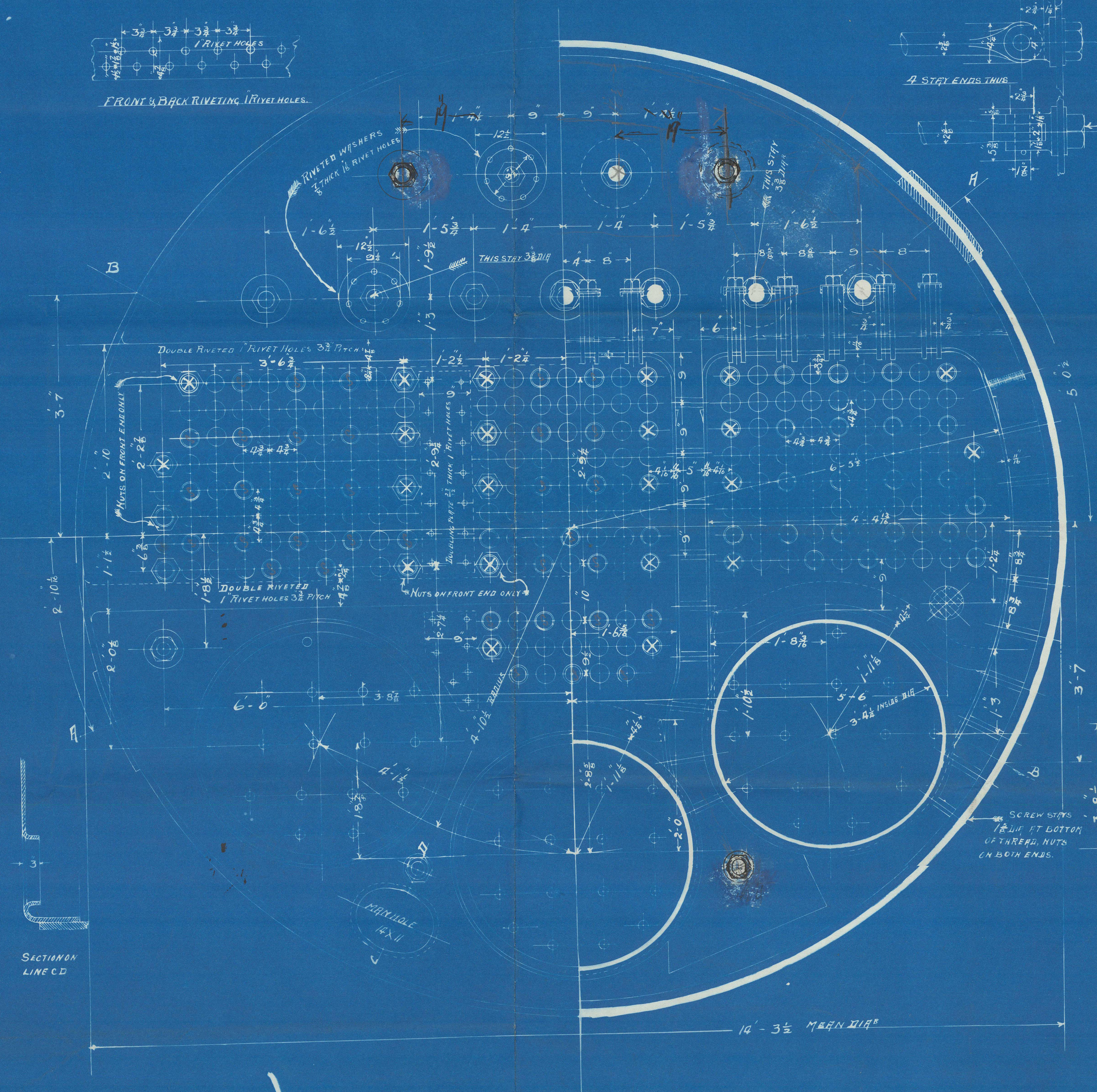
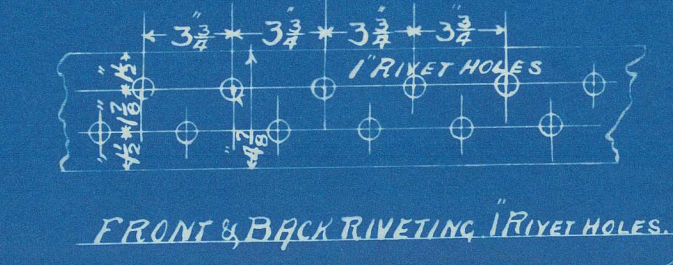
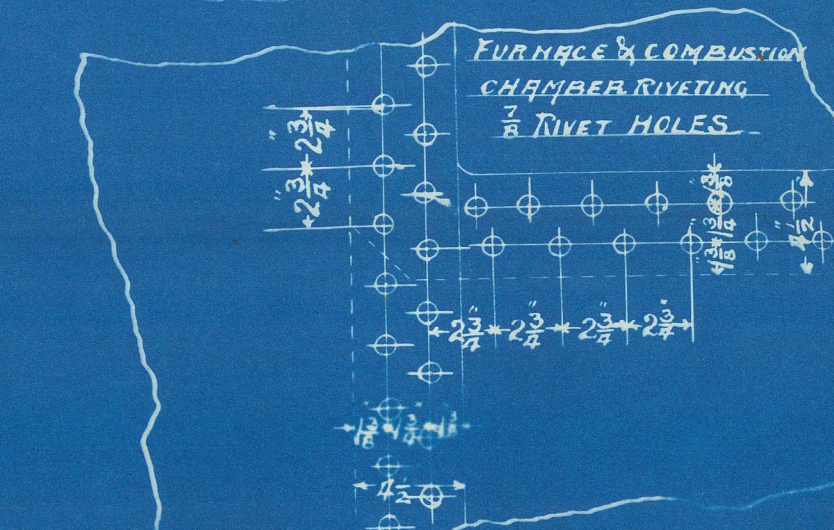
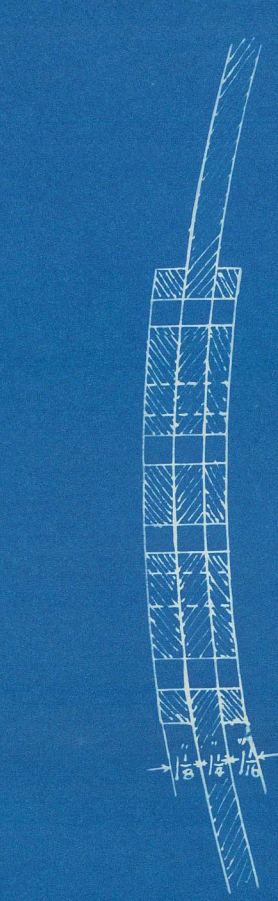
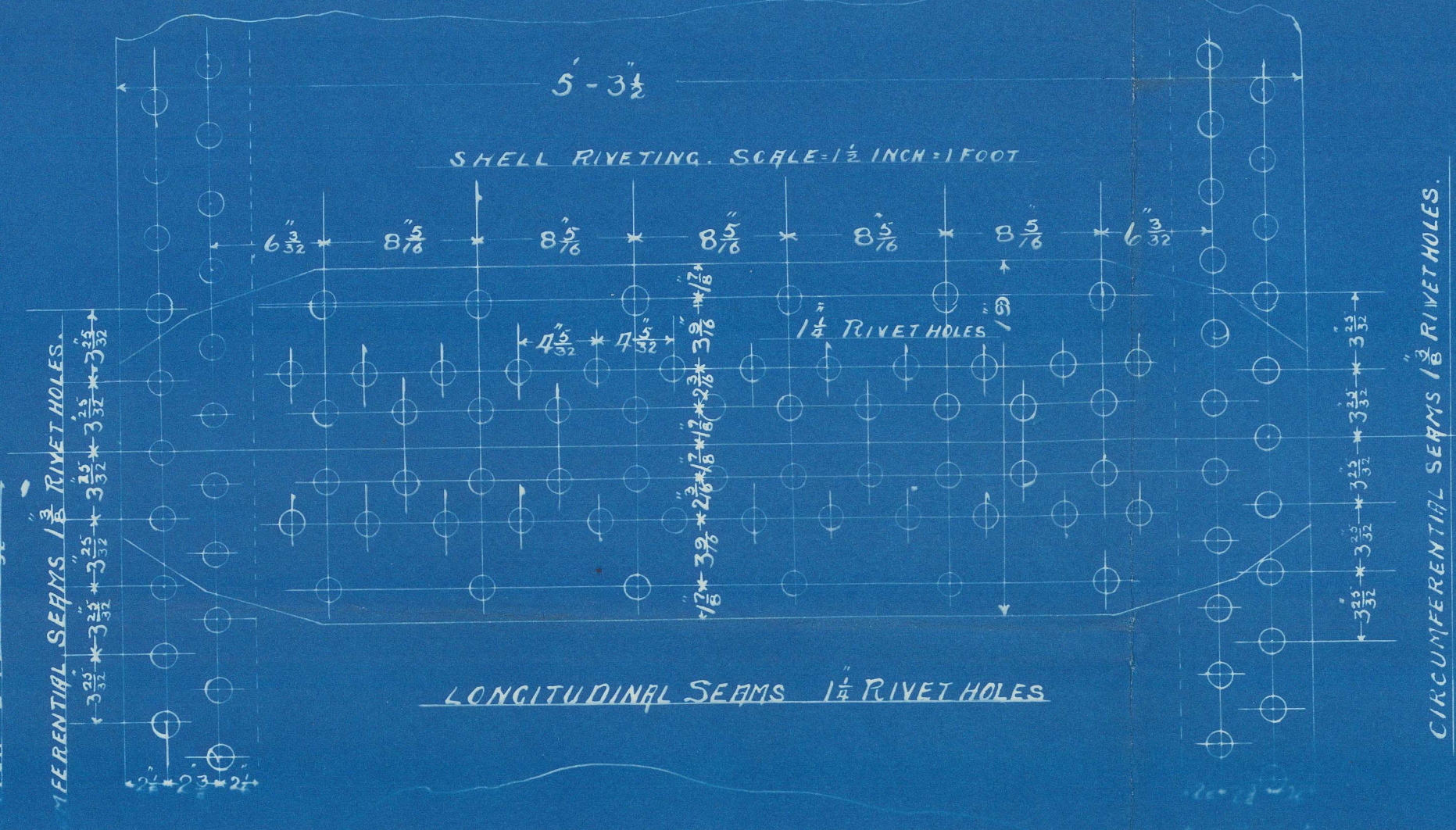
FACTOR OF SAFETY = 5 TS = 5-1

SCALE 1 INCH = 1 FOOT

1/4 92



PLATES	THICKNESS	SURFACES	SQ. FT.
SHELL	1/2"	228 TUBES	
END TOP	1/2"	3 FIRE BOXES	
FRONT TUBE PLATE	3/8"	3 FURNACES	
BOTTOM	3/8"	228 TUBE PLATES	
BACK CENTRAL	1/2"	FRONT	
BOTTOM	1/2"	TOTAL SURFACE IN TWO BOILERS	
BACK TUBE PLATE	3/8"	228 TUBES	
FIRE BOX TOP	1/2"	228 TUBES	
SIDES	1/2"	228 TUBES	
BACK	1/2"	228 TUBES	
FURNACES	1/2"	228 TUBES	
GIRDERS TWO PLATES	1/2"	228 TUBES	
CHAMBER BOTTOM	1/2"	228 TUBES	
STAYS STEEL SPACE	3/8"	228 TUBES	
WATER	2"	228 TUBES	
		TOTAL STEEL SPACE	



BOILERS NO 57S

MA. 12-12-92

Dec. 12. 12. 92

Endorse No. 63/ Drawing Office,
Southwick Engine Works,
Date 7-12-92
From GEORGE CLARK, Ltd.
To Royal Register
0189 2/2

GEORGE CLARK LTD
SOUTHWICK ENGINE WORKS
SUNDERLAND

BOILERS N^o 57S. 2 OFF.

WORKING PRESSURE 160 LBS PER SQUARE INCH

ALL PLATES, MAIN STAYS, RIVETS OF STEEL, TUBES & SCREW STAYS OF IRON, TUBES LAP WELDED

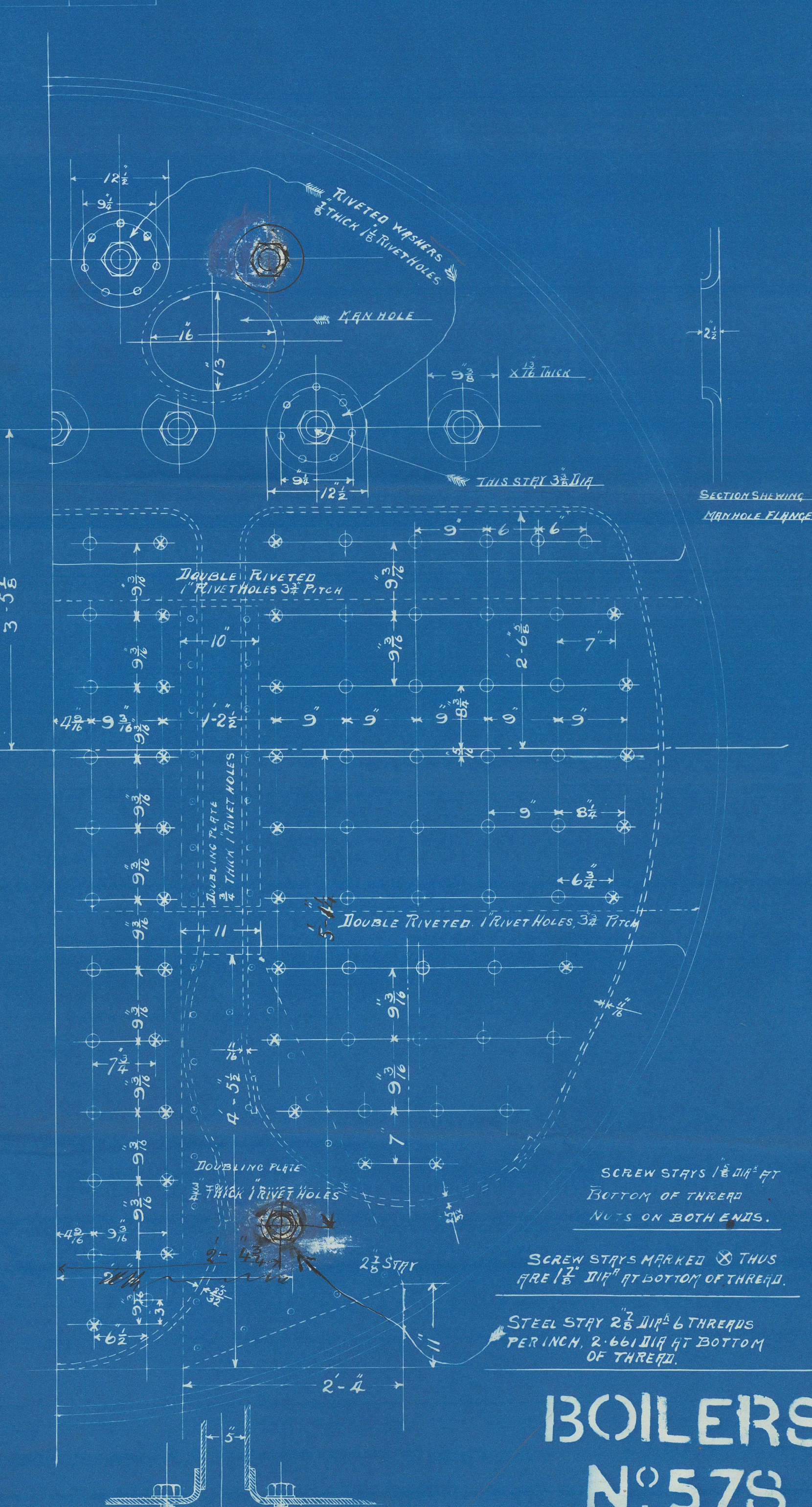
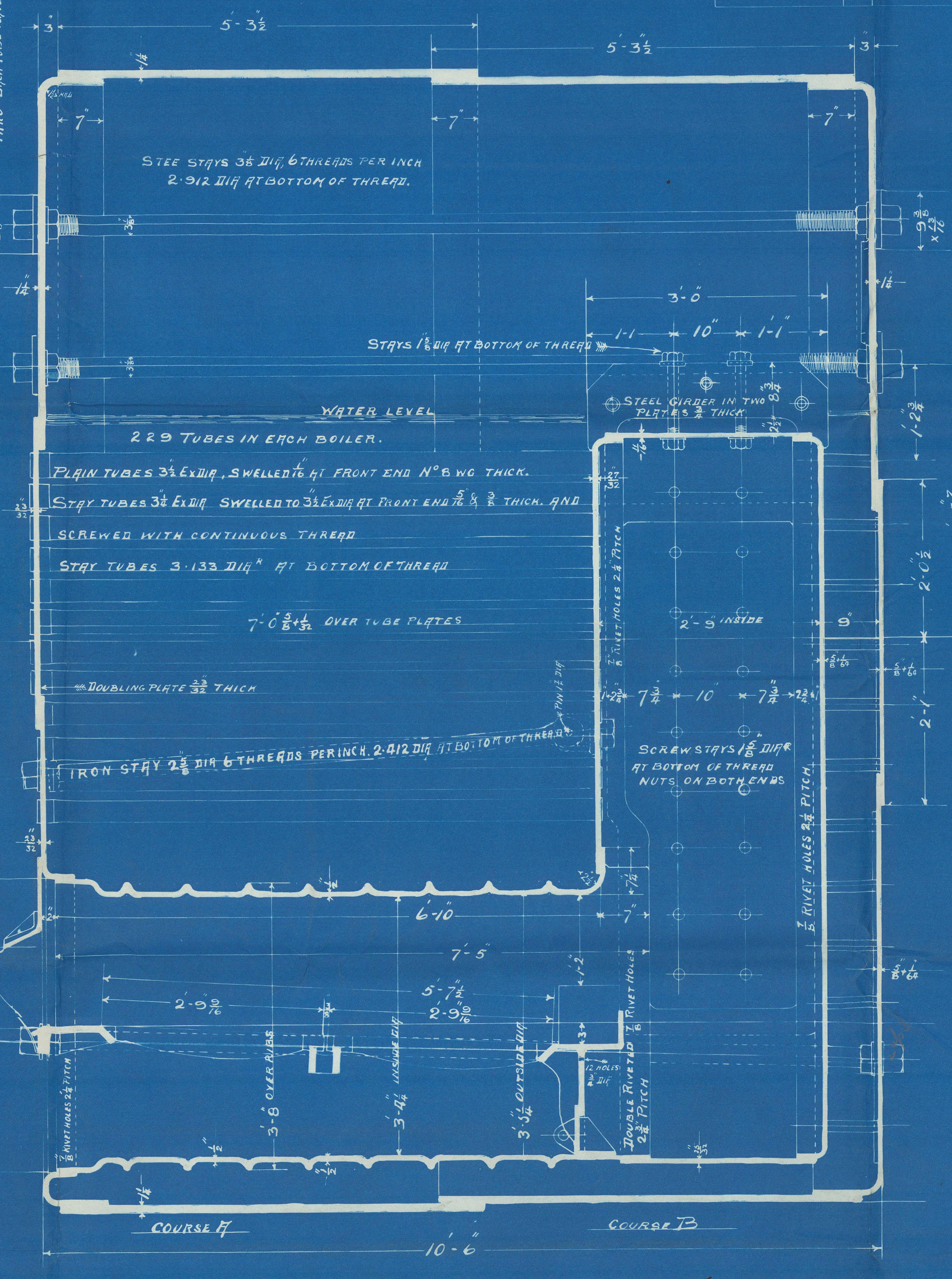
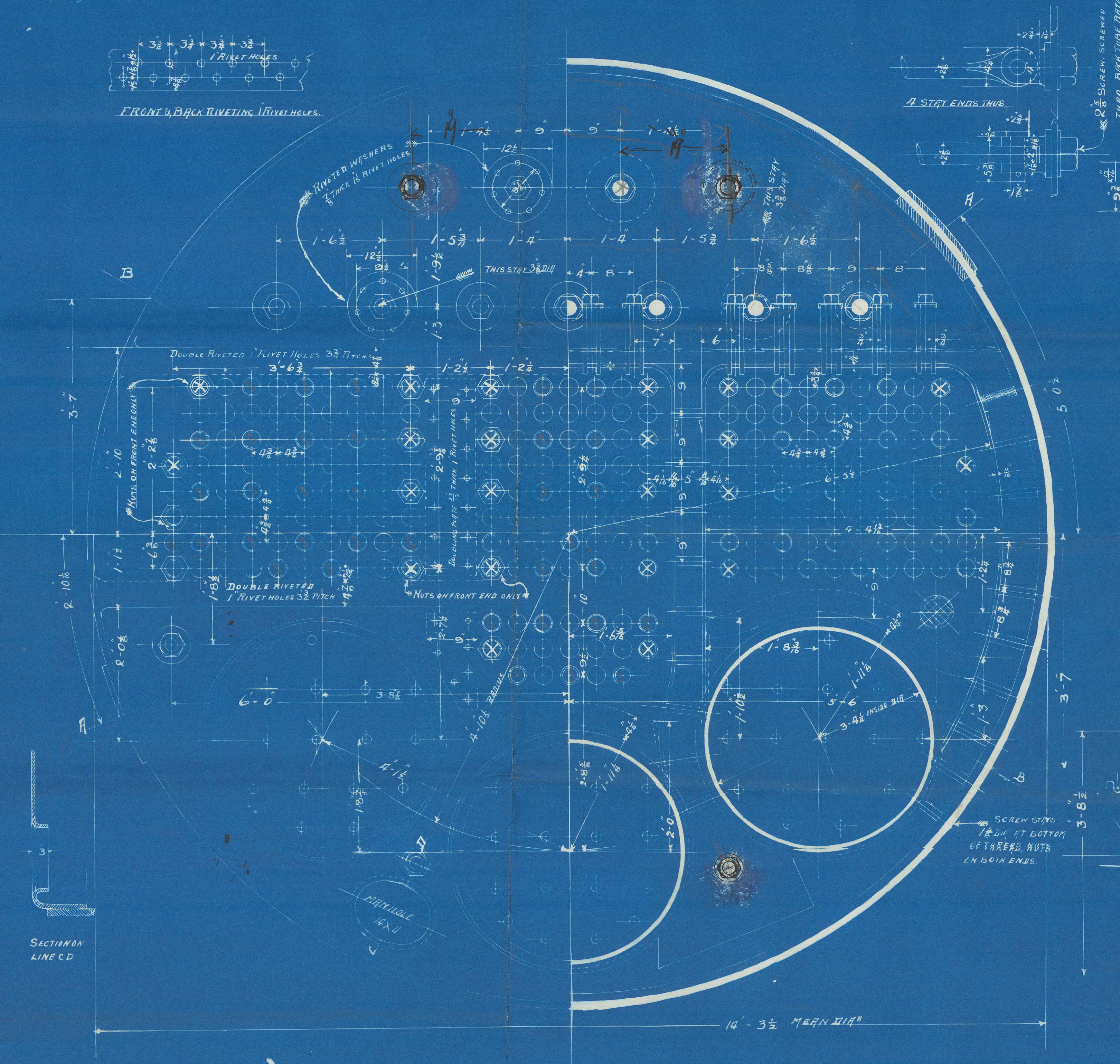
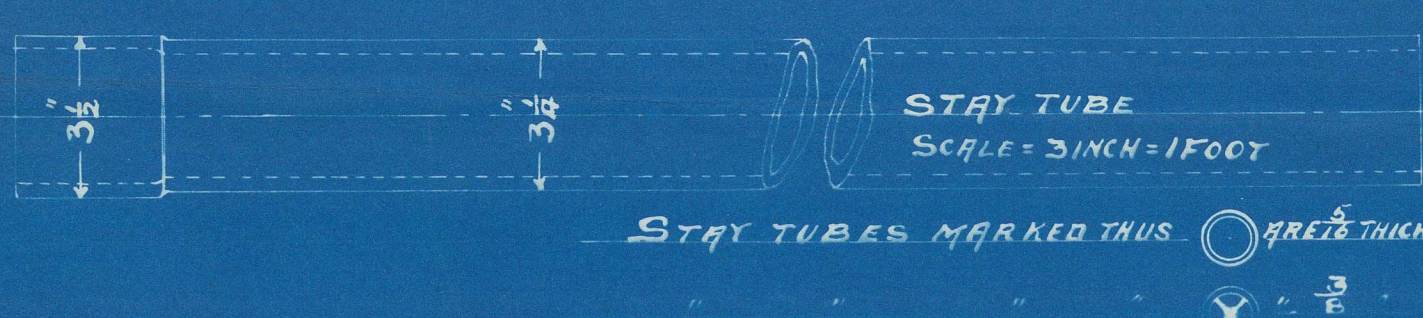
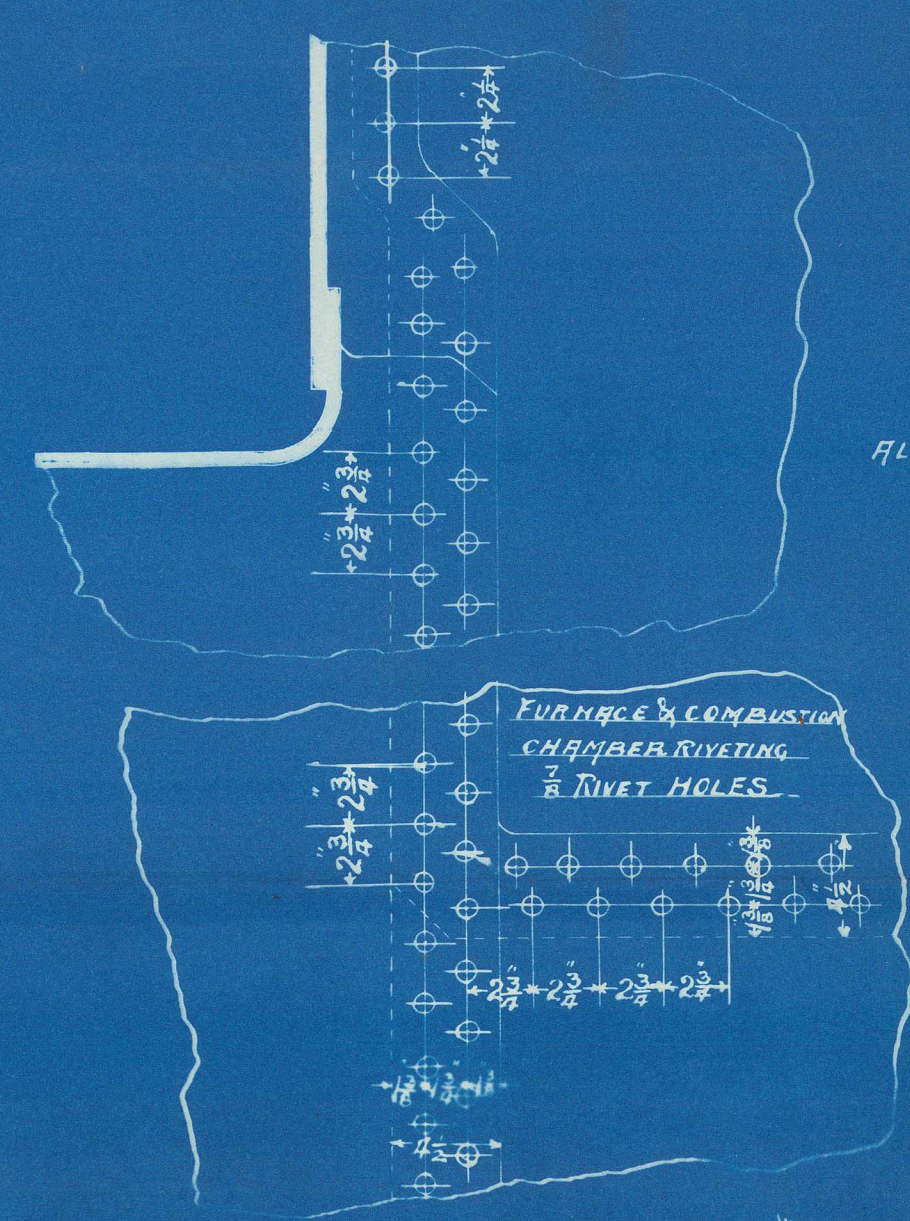
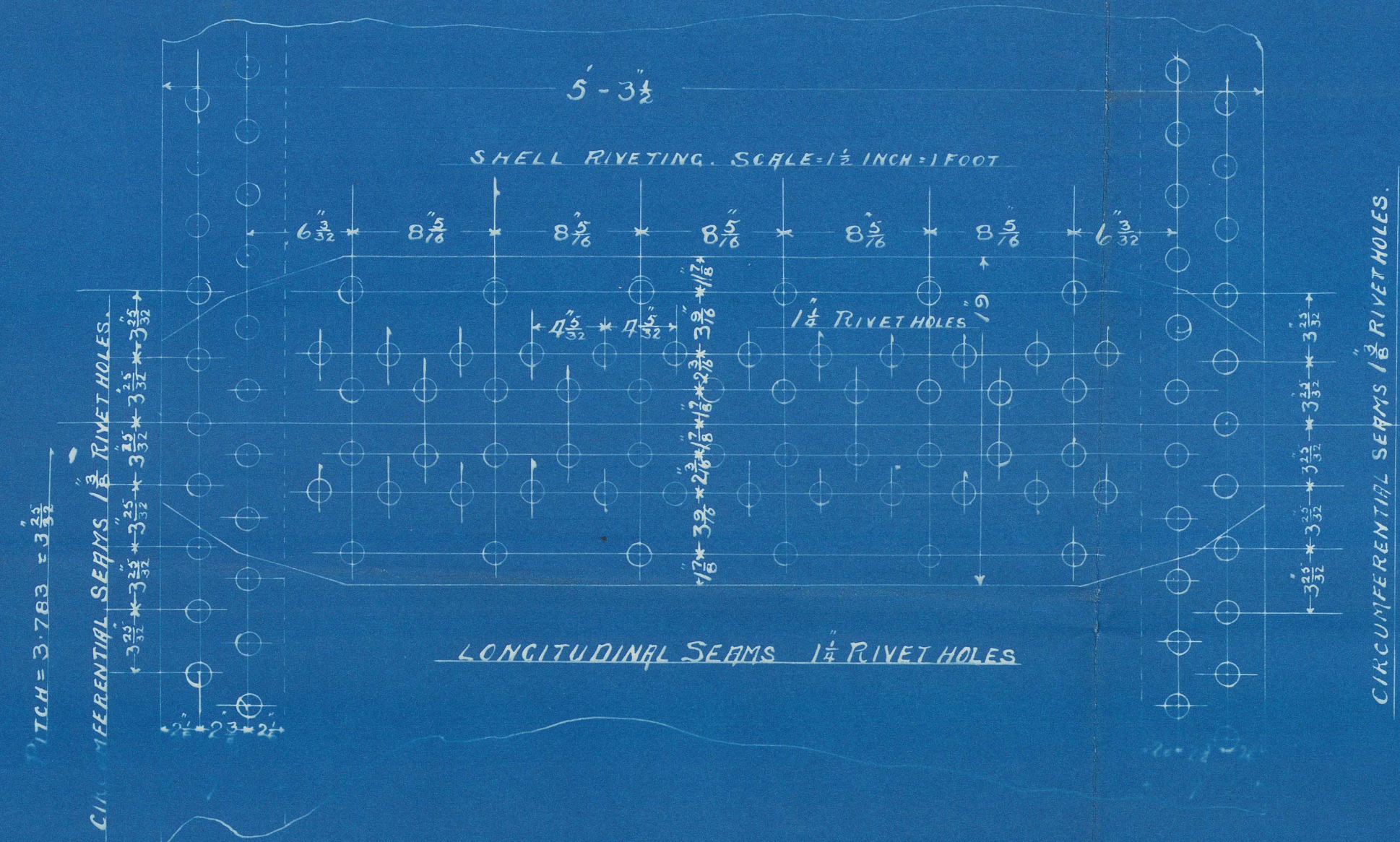
ALL HOLES DRILLED IN POSITION

FACTOR OF SAFETY = 5 + 5 = 5.1

SCALE = 1 INCH = 1 FOOT

1/14/92

PLATES	THICKNESS	SURFACES	SQ. FT.
SHELL	1/4"	229 TUBES	
END TOP	1/4"	3 FIRE BOXES	
FRONT TUBE PLATE	1/4"	3 FURNACES	
" BOTTOM	1/4"	3 BACK TUBE PLATES	
BACK CENTRAL	1/4"	FRONT "	
" BOTTOM	1/4"	TOTAL SURFACE IN TWO BOILERS	
BACK TUBE PLATE	1/4"	OVER TWO TUBES	
FIRE BOX TOP	1/4"	BACK TUBE PLATE	
" SIDES	1/4"	GRATE	
BACK	1/4"		
FURNACES	1/4"		
CIRCLERS TWO PLATES	1/4"		
CHAMBER BOTTOM	1/4"		
STEEL STEEL SPILL	3/8"		
" WATER	2 1/2"	TOTAL STEEL SURFACE	



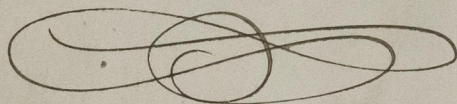
BOILERS N^o 57S

N.A.
12-12-92

G. Clark's h^o 578
Laing & —



S.S. "Umfuli"
Sunderland report
No 14162.



© 2021

Lloyd's Register
Foundation

SLD988-0189