

TELEGRAPHIC ADDRESS,
"BEARDMORE, GLASGOW."

TELEPHONE N° 1356.

LONDON OFFICE,
11 QUEEN VICTORIA ST. E.C.
NEWCASTLE OFFICE,
2 SAINT NICHOLAS BUILDINGS.

Parkhead Forge, Rolling Mills,
and Steel Works.

Glasgow. 5th July 1892

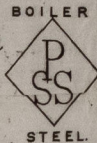
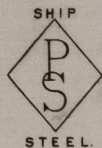
Messrs George Clark & Co.

Bought of William Beardmore & Co.

Manufacturers of Steel Plates Bars & Rivets (Siemens Process) & Iron Plates Bars &

Rivets for Ships, Boilers, &c. & Marine Engine Forgings of all descriptions.

Iron & Steel Plates flanged for Boiler Fronts &c.



B.S. 64 5/8	1 60	P.S.S.	3. 5	40 1/2	9/16	2 1 20
P. Girders	1 84 1/2		3. 9	15 3/4	7/8	1 2 16
C.S.	1 60		5. 6 1/2	40 1/2	9/16	3 3 8
F & R	1 150		7. 1 1/4	59 3/4	25/32	1 . . .
4	Per	CR	to			1 7 3 16

Wagon No 3950. Sunderland.

W. W. W. W.
Surveyor to Lloyd's Register.
6/7/92

5/64 1 11 - 1. 2. 16
1/69 3 " 1. 6. 1 -



© 2021

Lloyd's Register
Foundation

SLD984-0062