

TELEGRAPHIC ADDRESS,
"BEARDMORE, GLASGOW."

TELEPHONE N° 1356.

LONDON OFFICE,
11 QUEEN VICTORIA ST. E.C.
NEWCASTLE OFFICE,
2 SAINT NICHOLAS BUILDINGS.

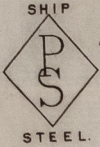
Parkhead Forge, Rolling Mills,
and Steel Works.

Glasgow. 15th April 1892

Messrs Geo. Clark & Co. Ltd.

Bought of William Beardmore & Co.

Manufacturers of Steel Plates Bars & Rivets (Siemens Process) & Iron Plates Bars &
Rivets for Ships, Boilers, &c. & Marine Engine Forgings of all descriptions.
Iron & Steel Plates flanged for Boiler Fronts &c.



564 F.Y.R.	2 54 9/51/55.	2 1 1/4 rad.	59 3/4	25/32	1 18 3 8
F.	2 504 5/16/4	9 4 1/2	85 1/2	21/32	5 10 1 12
P.	39 4 1/2 4 1/2	3 9	15 3/4	7/8	3 3 3 10
M.	3 463	5 6 1/2	40 1/2	9/16	11 3 10
C.S.	1 40 5/16/4	3 5	"	3/32	2 1 24
C.Y.	8 494	4 7 1/2	51 44 1/2	5/8	3 2 2 8
B.I.P.	1 400	4 6	40 1/2	5/8	3 2 8
C.Y.	2 403	4 6 3/4	18 5/8	1"	5 2 24
C.S.	63	to			15 5 1 4

per Wagon No 10414. 20045.
Sunderland.

Handwritten signature
Surveyor to Lloyd's Register.
18/4/92

3/5 35 11.4.19 - 14
2/4 28 10.6.1