

TELEGRAPHIC ADDRESS.
"BEARDMORE, GLASGOW."

TELEPHONE NO 1356.

LONDON OFFICE,
11 QUEEN VICTORIA ST. E.C.
NEWCASTLE OFFICE,
2 SAINT NICHOLAS BUILDINGS.

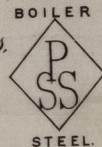
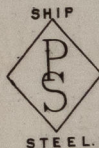
Parkhead Forge, Rolling Mills
and Steel Works.

Glasgow. 3rd May 1892.

Mess^{rs} Geo. Clark Ltd.

Bought of William Beardmore & Co.

Manufacturers of Steel Plates Bars & Rivets (Simons Process) & Iron Plates Bars &
Rivets for Ships, Boilers, &c. & Marine Engine Forgings of all descriptions.
Iron & Steel Plates flanged for Boiler Fronts &c.



564 $\frac{C}{SS}$ 1 1977 P/SS. 4.63/4 x 180/8. 1" 23.
SB 2 345/7 7.0 1/2 RAD 3 72 13/16 2.116

3 Per cts

Sunderland
Back to 39015.

$\frac{7}{11} = 1 \text{ P/SS}$ 23
 $\frac{8}{11} = 2.2 - 116$

Wm. H. H. H. H.
4/5/92

Superior to Lloyd's Register.

SLD 984-0058