

TELEGRAPHIC ADDRESS,  
BEARDMORE, GLASGOW.

TELEPHONE NO 1356.

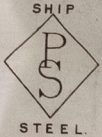
LONDON OFFICE,  
11 QUEEN VICTORIA ST. E.C.  
NEWCASTLE OFFICE,  
2 SAINT NICHOLAS BUILDINGS.

Parkhead Forge, Rolling Mills,  
and Steel Works,  
Glasgow. 26<sup>th</sup> May 1892

Messrs Geo. Clark Ltd.

Bought of William Beardmore & Co.

Manufacturers of Steel Plates Bars & Rivets (Siemens Process) & Iron Plates Bars &  
Rivets for Ships, Boilers, &c. & Marine Engine Forgings of all descriptions.  
Iron & Steel Plates flanged for Boiler Fronts &c.



564<sup>a</sup>s. 1985 P/SS. 18. 11<sup>3</sup>/<sub>8</sub> 66<sup>1</sup>/<sub>8</sub> 1<sup>1</sup>/<sub>64</sub> 23. .

Per CR to Sunderland  
Wagon No 38111.  
39011.

Geo. Woodcock  
Surveyor to Lloyd's Register.  
27/5/92

$\frac{2}{14}$



© 2021

Lloyd's Register  
Foundation

SLD984-0052