

FRI 18 AUG 90

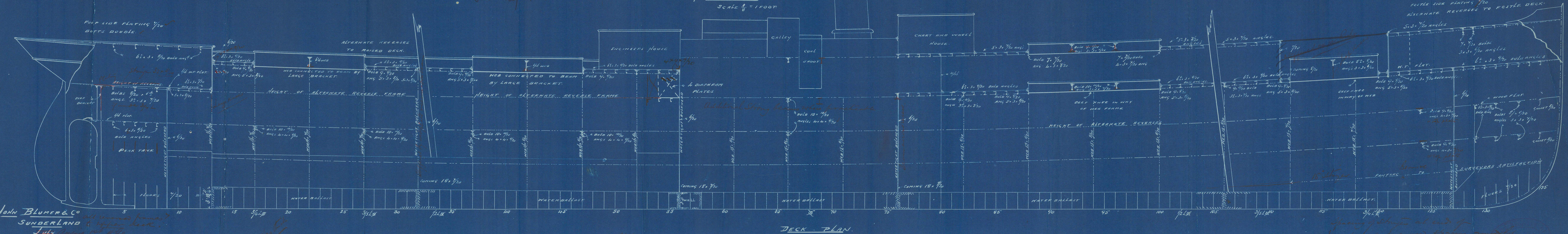
*1/2 Virginia Pirano
Sld Report No 16152*

ELEVATION

No 102

SCALE 1/8" = 1 FOOT

*Part covering deck vessel
see plans 16152*



JOHN BLUMER & CO
SUNDERLAND & LONDON
*all work done
July August 1890*

DECK PLAN

BRIDGE STRINGER 38" 9/16 BUTTS DOUBLE LAPPED

RAISED DECK STRINGER 39 1/2" 1/16 FOR 1/2 LENGTH BUTTS TREBLE FOR 1/2 LENGTH

7/16 FOR 1/2 L 1/16 AT ENDS
BUTTS DOUBLE FOR 1/2 L

5/16 FLAT IN WAY OF OPENINGS

3/16 IN WAY OF OPENINGS

3/16 IN WAY OF OPENINGS

3/16 IN WAY OF OPENINGS

7/16 FLAT FOR 1/2 L
1/16 AT ENDS
BUTTS DOUBLE FOR 1/2 L

3/16 IN WAY OF OPENINGS

DECK FLAT 5/16
BUTTS SINGLE

16" 0" 14" 0" 2.9 ABOVE DECK

20" 0" 14" 0" 2.9 ABOVE DECK

24" 0" 14" 0" 1.6 ABOVE DECK

16" 0" 14" 0" 2.9 ABOVE DECK

DECK FLAT 5/16
BUTTS SINGLE

16" 0" 14" 0" 2.9 ABOVE DECK

SLD 931-013

J. Blum Ho.

H. No. 102

Elevation.

* "Virginia Peirano"

Sld Report N° 16152

SLD976-0193



© 2021

Lloyd's Register
Foundation