

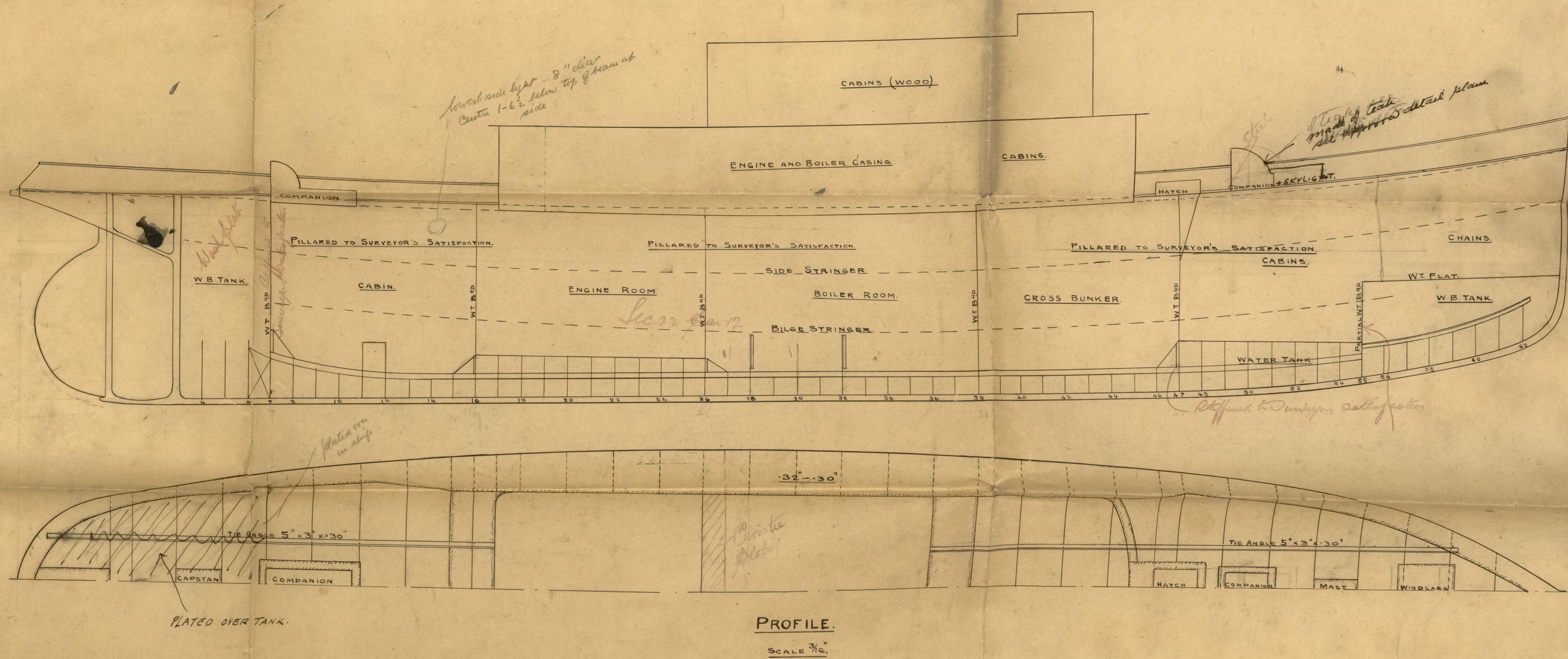
631
SHIP N° 436. Design 8.
NEW STEEL SCREW TUG.

DIMENSIONS.

LENGTH O.A.	125'-0"
LENGTH B.P.	118'-0"
BREADTH MLD.	25'-0"
DEPTH MLD.	14'-6"

EQUIPMENT.

1 - 7/4 CWT. BOWER ANCHOR, STOCKLESS
1 - 6 1/2 CWT. ————
1 - 3 ———— KEDGE ———— EX STOCK
1 - 2 1/4 ———— STREAM ————
120 FMS. 1 1/8 DIA. STUD LINK CHAIN CABLE
50 ———— 5/8 ———— STREAM CHAIN
40 ———— 5" COIL ROPE
40 ———— 5" COIL ROPE
40 ———— 3 1/2" MANILA
22 ———— 1 1/4" HEAVING LINE.



PROFILE.
SCALE 3/16"



MIDSHIP SECTION.

PLAN N° 11187A

SCALE 3/16"

JAMES POLLOCK, SONS & CO. LTD.
3 LLOYD'S AVENUE.
LONDON.
11 AUG. 1911.

Design 436

Newcastle-on-Tyne

Hepples DR 621

Mid Section & Pipe Deck Plans.

NEWCASTLE ON TYNE

STUG "DREADFUL"

NEWCASTLE ON TYNE

REPORT No. 61982

SLD9970-0249



© 2021

Lloyd's Register
Foundation