

TELEGRAPHIC ADDRESS.  
"BEARDMORE, GLASGOW"

TELEPHONE No 1356.

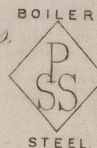
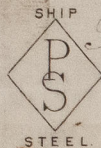
LONDON OFFICE.  
11 QUEEN VICTORIA ST. E.C.  
NEWCASTLE OFFICE.  
2 SAINT NICHOLAS BUILDINGS.

Parkhead Forge, Rolling Mills  
and Steel Works.  
Glasgow. 4<sup>th</sup> August 1887.

Dear Mr. Rotherham.

Bought of William Beardmore & Co.

Manufacturers of Steel Plates Bars & Rivets, Siemens Process & Iron Plates Bars & Rivets for Ships, Boilers, &c. & Marine Engine Forgings of all descriptions.  
Iron & Steel Plates flanged for Boiler Fronts &c.



B 193	2	53	$\left\{ \begin{smallmatrix} 5 \\ 7 \end{smallmatrix} \right\}$	1.6 1/2	62	1 1/8	6 3 8
	2	"			71		7 2 4
9	2	159	$\left\{ \begin{smallmatrix} 3 \\ 10 \end{smallmatrix} \right\}$	5.9	42 1/2	7/8	13 2 16
8	1	86		7.11	35 1/2	9/16	4 3 .
L	1	87		9.9	"		5 3 .
L	2	103		5.3 1/2	58 3/4	7/8	17 2 20
9	1	126		15.5 1/2	71 3/4	3/4	1 5 2 16
a	1	118		14.10	72	1 1/2	2 . 8
	2	106	2.4 1/2	24 1/2		4 1 20	
	1	58	$\left\{ \begin{smallmatrix} 5 \\ 7 \end{smallmatrix} \right\}$	14.10	72		1 19 2 20
	4	34		1.6 1/2	71	1 1/8	15 1 12
0	1	945	$\left\{ \begin{smallmatrix} 5 \\ 7 \end{smallmatrix} \right\}$	6.1	10 1/2	5/4	1 1 8
20	19	812		3.0 1/2	14 1/2		1 . 1 8
5	18	1258	$\left\{ \begin{smallmatrix} 9 \\ 4 \end{smallmatrix} \right\}$	"	"		18 3 4
2	2	1438		10.0	18 1/2		8 3 .
a	4	403	$\left\{ \begin{smallmatrix} 6 \\ 7 \end{smallmatrix} \right\}$	"	10 1/2		10 . 12
0	1	"		6.1	"		1 2 .
20	1	461	$\left\{ \begin{smallmatrix} 6 \\ 7 \end{smallmatrix} \right\}$	3.0 1/2	14 1/2		1 . 8
	1	430		1.6 1/2	72	1 1/8	4 . .
	3	574	$\left\{ \begin{smallmatrix} 2 \\ 3 \end{smallmatrix} \right\}$	"	"		11 3 12
6	1	152		15.1	71 3/4	3/4	1 5 . 16
70	Per Rotherham			Rollion	14 4 1 3/4		
				London			

Druck no. 8590. 385

J. J. Roberts  
Surveyor to Lloyd's Register.



Lloyd's Register  
Foundation

SL6968-0182