

TELEGRAPHIC ADDRESS.
"BEARDMORE, GLASGOW"

TELEPHONE NO 1356.

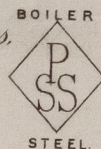
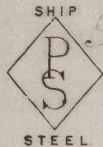
LONDON OFFICE,
11, QUEEN VICTORIA ST. E.C.
NEWCASTLE OFFICE,
2 SAINT NICHOLAS BUILDINGS.

Parkhead Forge, Rolling Mills,
and Steel Works.
Glasgow. 13th Feby. 1890

Messrs Wm. Doxford & Son.

Bought of William Beardmore & Co.

Manufacturers of Steel Plates Bars & Rivets (Simons Process) & Iron Plates Bars &
Rivets for Ships, Boilers, &c. & Marine Engine Forgings of all descriptions.
Iron & Steel Plates flanged for Boiler Fronts &c.



193 A	1 330	SS.	13.8	66 7/8	1 1/8	1 11 2 16
B	6 343 3/4	SS.	13.6	40 1/2	"	10 1 2 24
L	1 326		4.3	55	9/16	4 1 16
N	10 419 434		2.9	13 1/2	3/4	10.20
R.	1 438		3.9	9 1/2	"	3 16
19	Rence R. to Rallion					12 11 3 8

Sunderland.

Truck No. 8423.1299.

J. A. Roberts
Surveyor to Lloyd's Register.
14/2/90

(1/6) 5 Pl. 12 - 3 -
(1/4) " " 11 - 8



© 2021

Lloyd's Register
Foundation

SLD968-0179