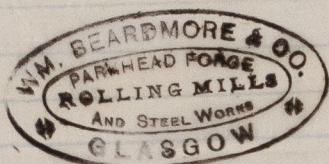


2nd Octr 89.

Messrs Wm Duxford & Son.



3193 B	1	582	P/ss.	14	4 1/2	41	1 1/32	1	18	1
L	1	410	P/s.B	9	9	33 1/2	9/16		5	2 12
K	1	668		4	11	"	"		4	2 8
	1	923	P/ss.	1	6 1/2	42	1/8		3	3 16
	4								2	12 1 8

per rail to Pailion,
Sunderland.
Track No 8385CR.

Surveyor to Lloyd's Register.

4/10/89

$\frac{2}{13}$	1	Pl	1	18	1	-
$\frac{2}{14}$	1	"		5	2	12
$\frac{2}{14}$	1	"		4	2	8
$\frac{4}{15}$	1	"		3	3	16



© 2021

Lloyd's Register
Foundation

SLD968-0175