

TELEGRAPHIC ADDRESS.  
"BEARDMORE, GLASGOW"

TELEPHONE No 1356

LONDON OFFICE,  
11 QUEEN VICTORIA ST. E.C.  
NEWCASTLE OFFICE,  
2 SAINT NICHOLAS BUILDINGS.

Parkhead Forge Rolling Mills  
& Steel Works.

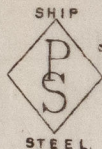
Glasgow. 29<sup>th</sup> Nov 1888


Mr George Clark

Bought of William Beardmore & Co

Manufacturers of Steel Plates Bars & Rivets (Siemens Process) & Iron Plates Bars &  
Rivets for Ships, Boilers, &c. & Marine Engine Forgings of all descriptions.

Iron & Steel Plates flanged for Boiler Fronts &c.



B494S	2	<sup>80</sup> 84		16-1 <sup>7</sup> / <sub>8</sub> x 64 x 1 <sup>5</sup> / <sub>32</sub>	3 14 - -
	1	93		16-0 <sup>3</sup> / <sub>8</sub> x " x "	1 16 3
	1	105		11-4 <sup>3</sup> / <sub>4</sub> x " x "	1 60 8
CS	1	94		8-11 <sup>1</sup> / <sub>2</sub> x 27 x 9/16	4 1 16

5 Per CR to Sunderland  
truck 6211

(4  
49)

2021  
Jm Johnston  
Surveyor to Lloyd's Register  
1.12.88  
Foundation