

SLD962-0308

TELEGRAPHIC ADDRESS.
"BEARDMORE, GLASGOW"

TELEPHONE NO 1356.

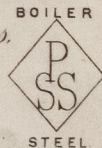
LONDON OFFICE,
11 QUEEN VICTORIA ST. E.C.
NEWCASTLE OFFICE,
2 SAINT NICHOLAS BUILDINGS.

Parkhead Forge, Rolling Mills,
and Steel Works,
Glasgow. 6th March 1879.

Geo. Clark Esq.

Bought of William Beardmore & Co.

Manufacturers of Steel Plates Bars & Rivets (Siemens Process) & Iron Plates Bars &
Rivets for Ships, Boilers, &c. & Marine Engine Forgings of all descriptions.
Iron & Steel Plates flanged for Boiler Fronts &c.



B 494

CS 2	830 ✓	P/SS	8-11 1/2	24
2	891 ✓		6-5 1/2	24
BTP 1	269 ✓		5-8 1/2	38
CB 1	311 ✓		to sketch	

9/16	52.
"	61 1/2
3/4	5-8
9/16	83.
	182 20

6 Per B.R. to Southwick
Eng. Wks. Sunderland
Truck 38303

(4/11)

J. J. Roberts
Surveyor to Lloyd's Register.

J. J. Roberts
Lloyd's Register
Foundation