

ROBERT THOMPSON & SONS,
Iron and Steel Shipbuilders and
Engineers,
SOUTHWICK YARD & BRIDGE DOCKYARD,
SUNDERLAND.

See also Sec
22-3-58

— N^o 150 — "PORTSLADE"

MIDSHIP SECTION FOR N^o 150 S.S.

Length B.P.	161'-6"
for Lloyds	160'-4 1/2"
Beam extreme	29'-9 1/2"
moulded	29'-8"
Depth in hold to floors	13'-10"

CLASS 100A1 STEEL
Scale 1/8" = 1 foot

ROBERT THOMPSON & SONS,
Iron and Steel Shipbuilders and
Engineers,
SOUTHWICK YARD & BRIDGE DOCKYARD,
SUNDERLAND.

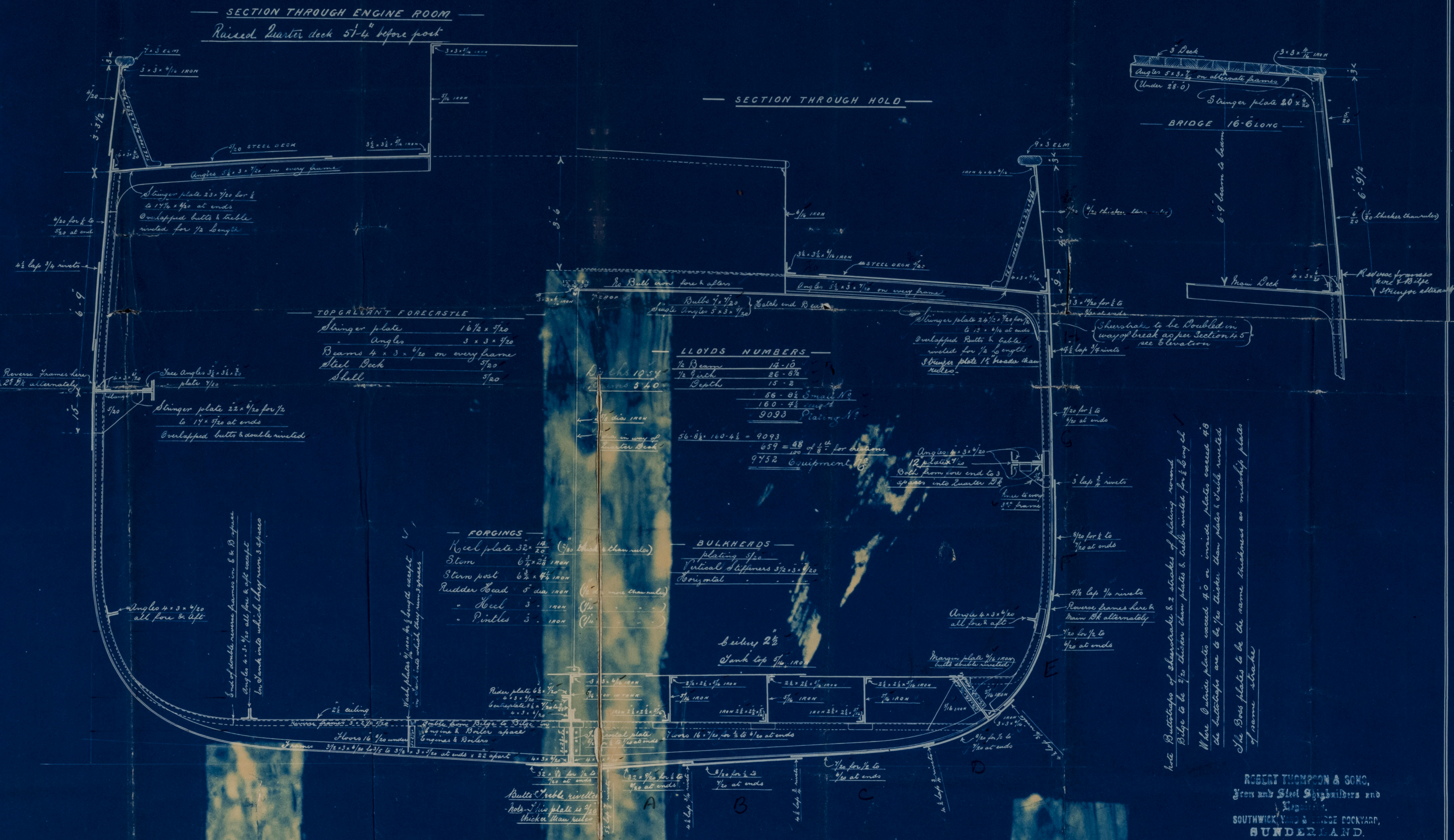
Anchors & Chains 8"

EQUIPMENT N^o 9752

1 Bow Anchor 10'-0" ea of stock	
1 " " 10'-0" " "	
1 " " 8'-2" " "	
Collective 28'-2" " "	
1 Stream Anchor 5'-3" ea of stock	
1 Redge 1'-3" " "	
1 " " 0'-3" " "	
195 fms of 1 1/2" Stud Chain Cable	
60 " 3/4" Stream Chain	
75 " 6 Comp Towline	
90 " " " "	

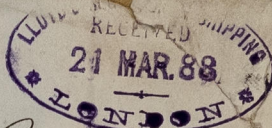
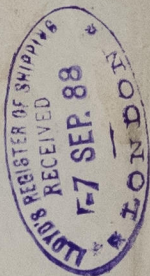
EXTRAS

2 Steel mooring lines 2 3/4" cir	
120 fms of 5" Manilla	
120 " " 3 1/2"	
1 Coil " 3" Comp	



ROBERT THOMPSON & SONS,
Iron and Steel Shipbuilders and
Engineers,
SOUTHWICK YARD & BRIDGE DOCKYARD,
SUNDERLAND.

ROBERT THOMPSON & SONS,
Iron and Steel Shipbuilders and
Engineers,
SOUTHWICK YARD & BRIDGE DOCKYARD,
SUNDERLAND.

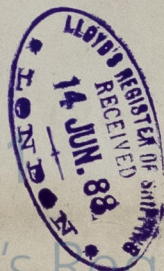


Ss. Portslade

No. 14737.



SLD958-0340



© 202

Lloyd's Register
Foundation