

14.5.86.
21.1.88

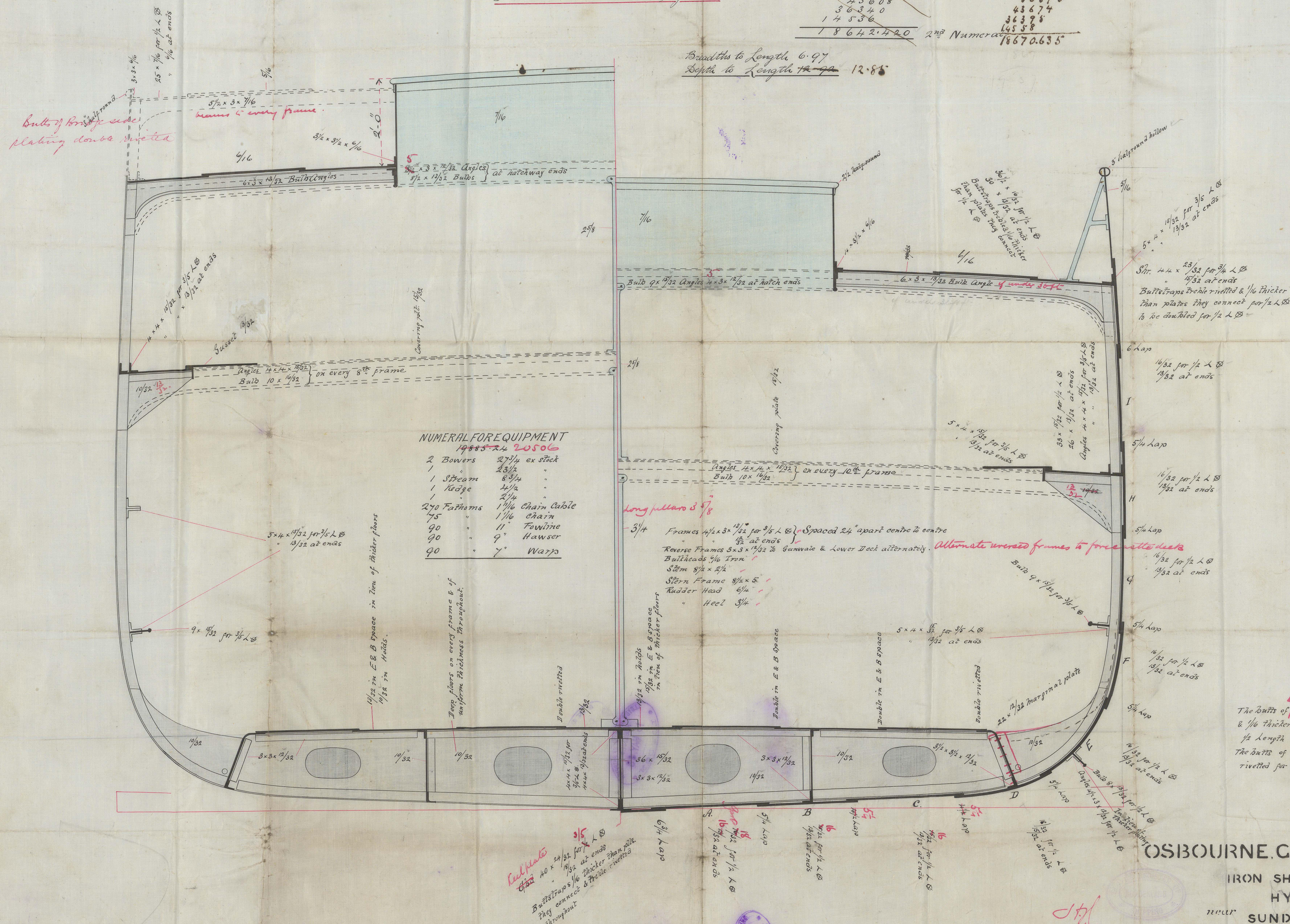
S.S. Kathleen.

Dimensions Per Register about. $258' \times 37' \times 18\frac{1}{2}'$
to top of ordinary floors

To be built on the Cellular system.

1/2 Breadth	18.42		18.42
1/2 Depth	34.42		34.42
1/2 Depth	19.84		19.84
	72.68	1 1/2	72.68
	256.5		256.5
	363.40		363.40
	436.08		436.08
	363.40		363.40
	145.36		145.36
	1864.24	2 1/2	1864.24

Breadth to Length 6.97
Depth to Length ~~12.92~~ 12.81



The Butts of ⁴ Strakes ^{at the bilge} ~~are~~ to be treble rivetted
& $\frac{1}{16}$ thicker than plates they connect for
 $\frac{1}{2}$ length amid ships
The Butts of Strakes A. B & C. to be treble
rivetted for $\frac{1}{2}$ L ϕ

OSBOURNE, GRAHAM & CO.

IRON SHIPBUILDERS
HYLTON.
SUNDERLAND.

