

S.S. Petal's Sta. report No.

27.10.87
1.11.87
15.12.87

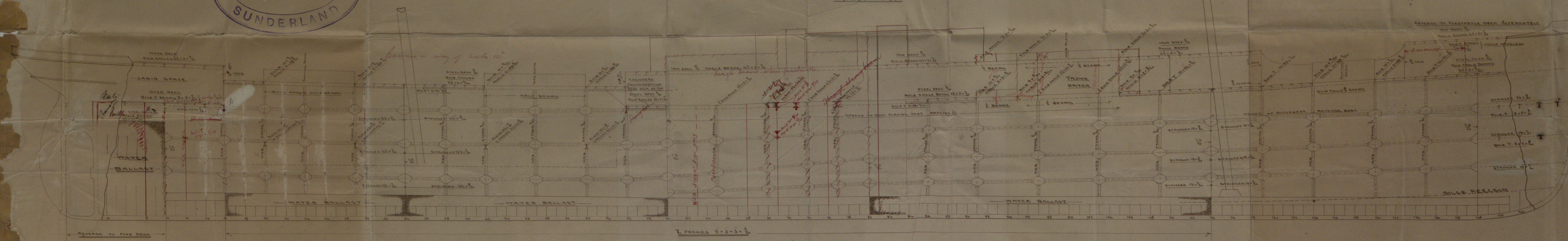
SKETCH SHewing PROPOSED EXTRA STRENGTHENING
IN BRIDGE IN LIEU OF FITTING DOUBLING PLATE IN
SHEERSTRAKE, ALSO FOR DECREASED FREEBOARD.

NOTE
RULE REVERSE FRAMES TO MAIN & LOWER DECK ALTERNATELY
PROPOSED Z FRAMES ALL TO BRIDGE DECK

SCREW STEALER

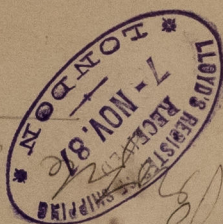
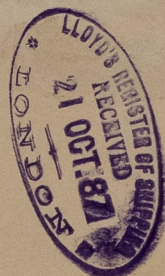
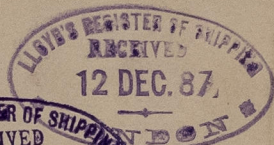
No 232

SCALE 1/2" = 1 FOOT



27/10/87

SLD957-0177



© 2021

Lloyd's Register
Foundation