

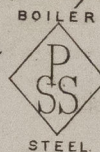
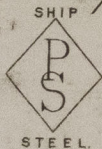
Mill Department.
London Office.
11 Queen Victoria St.
E.C.

Parkhead Forge, Rolling Mills.
and Steel Works.
Glasgow. 29th June 1887

Mr. John Dickinson

Bought of William Beardmore & Co

Manufacturers of Steel Plates & Bars, (Siemens Process) & Iron Plates & Bars for
Ships, Boilers, &c. & Marine Engine Forgings of all descriptions.
Iron & Steel Plates flanged for Boiler Fronts &c.



2	Bay Steel & Rivet	2 1/2 x 1 1/2	tanxcons	.	1	3	7
3		3 1/4	.	anapto	.	2	1 24
5		3 3/4	.	"	.	5	.
15		4 1/2 x 1 1/2	Orakld	.	14	2	25
11		" x 1 1/2	.	.	11	.	8
4		4 1/2	.	.	4	1	.
9		3 1/2	.	.	8	2	19
3		5	.	.	3	1	5
3		5 1/2	.	.	5	1	5
8		6	.	.	2	3	2
6		3 1/2	.	tanx	5	1	21
8		3 1/4	.	.	8	1	7
2		5	.	.	2	1	7
1		5 1/2 x 1 1/2	.	.	3	3	
<u>76 Pouch to Sunderland</u>					<u>3</u>	<u>14</u>	<u>21</u>

30x11 1/2 4 1/2

(1/2) (2/3) (2/3)

Walter Wilson
Lloyd's Register
2/7/87



© 2021

Lloyd's Register
Foundation

SLD956-0230