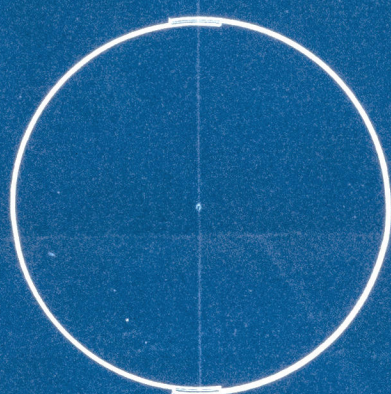
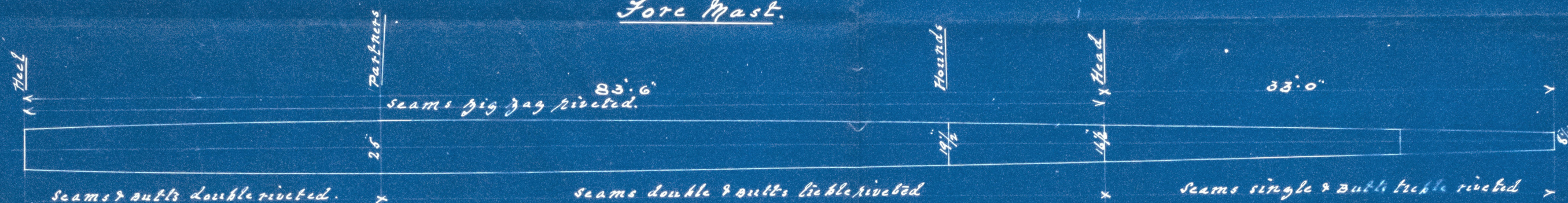


S. S. Hubbuck Sld report No. 13938

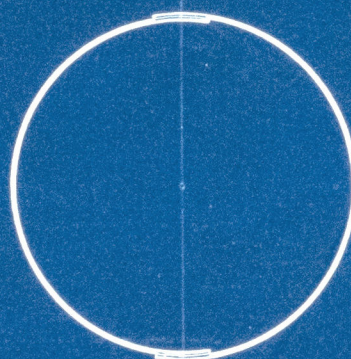
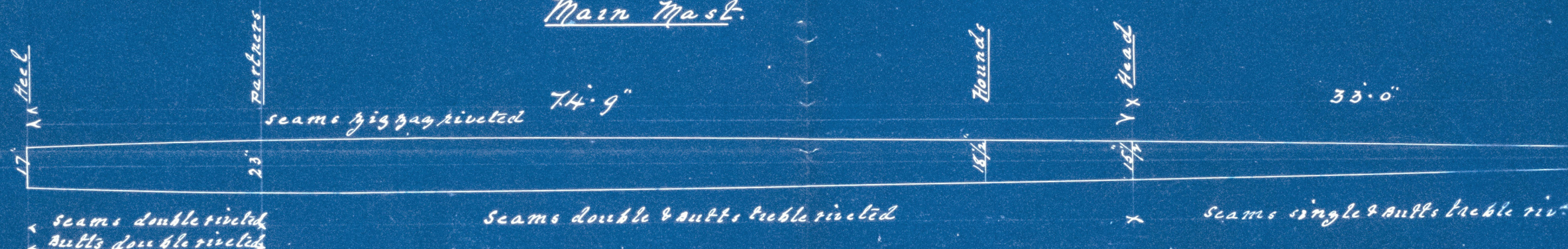
IRON MASTS
SS. 211

Fore Mast.



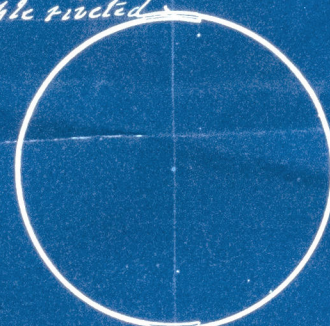
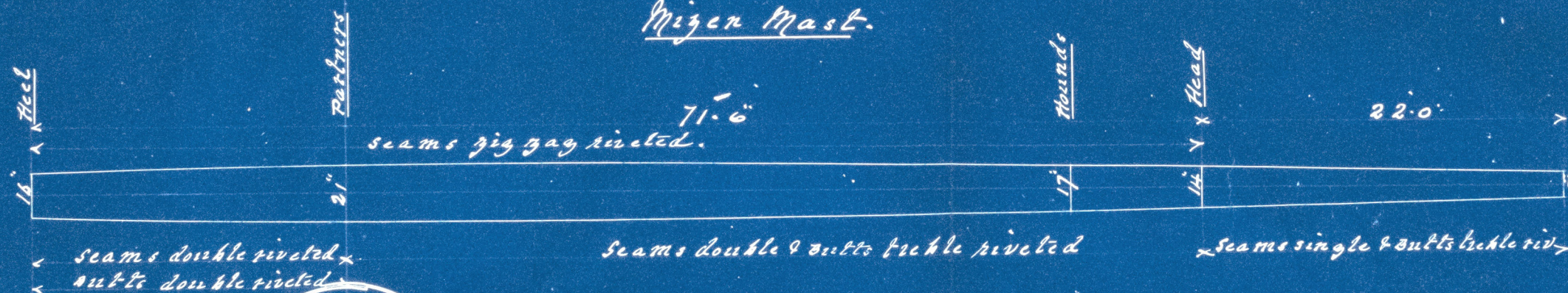
	Diam'	Thick'
Heel	18 1/2	5/8
Partners	25	3/4
Horns	19 1/2	3/4
Head	14 1/2	3/4
Topmast head	8 1/2	3/4
Doubling		3/4
Butts traps 1/2 thicker than the plates they connect, fitted inside.		

Main Mast.



	Diam'	Thick'
Heel	17	3/4
Partners	23	3/4
Horns	18 1/2	3/4
Head	14 1/2	3/4
Topmast head	8	3/4
Doubling		3/4
Butts traps 1/2 thicker than the plates they connect, fitted inside.		

Mizen Mast.



	Diam'	Thick'
Heel	16	3/4
Partners	21	3/4
Horns	17	3/4
Head	14	3/4
Topmast head	7	3/4
Doubling		3/4
Butts traps 1/2 thicker than the plates they connect, fitted inside.		

Joseph L. Thompson & Sons
iron & steel shipbuilders
with yards
Sunderland.

J. J. B. R. T. R.



SLD952-0119

S.S. 211

Lloyd's

Mast's

SLA952-0119



© 2021

Lloyd's Register
Foundation