

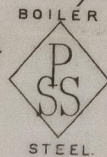
Mill Department.
London Office.
11 Queen Victoria St.
E.C.


Parkhead Iron & Steel
Forge & Rolling Mills.
Glasgow. 16th May. 1885

Messrs Thos Richardson & Co

Bought of J. & W. Beardmore.

Manufacturers of Steel Plates & Bars, (Siemens Process) & Iron Plates & Bars for
Ships, Boilers, &c. & Marine Engine Forgings of all descriptions.
Iron & Steel Plates flanged for Boiler Fronts &c.



812 4 60.523.413.396.  21. 0 66 1/2 1 1/2 9 12 3 20

2 824 827. 6. 1 71 13/16 1 1 3 8

17 52.90 114. 3. 8 10 7/8 17 1 1/4

23 Per rail to Newcastle

11. 12. 1/4

On truck Nos 14632. 9405.





G. L. Audmarsh
Lloyds Surveyor
18-5-85



© 2021

Lloyd's Register
Foundation

SLD952-0116