

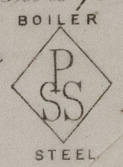
Mill Department.  
 London Office.  
 11 Queen Victoria St.  
 E.C.

Parkhead Iron & Steel  
 Forge & Rolling Mills.  
 Glasgow. 27 May 1885

Messrs The Richardson & Sons.

Bought of J. & W. Beardmore.

Manufacturers of Steel Plates & Bars, (Siemens Process) & Iron Plates & Bars for  
 Ships, Boilers, &c. & Marine Engine Forgings of all descriptions.  
 Iron & Steel Plates flanged for Boiler Fronts &c.



812	2 246	9 6 36	1/2	10 1 24
	21 781	3 8 10	7/8	1 10 1 4
	1 96	20 8 2 66 2	1/8	2 7 2
	2 744	3 0 36	3/4	5
	1	4 0 26		2 1 20
	2 988	5 6 43	5/8	9 1 20
	39			5 5 12
39 per rail to Harlepool				
On truck No 20531				
	2 (3/44)	23 (5/45 6/45)		

Edmund  
 Lloyd's Surveyor  
 29-5-85