

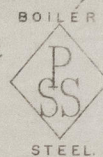
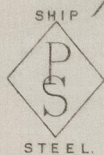
Mill Department.
London Office.
11 Queen Victoria St.
E.C.


Parkhead Iron & Steel
Forge & Rolling Mills.
Glasgow. 6th June 1888.

Messrs J. & W. Richardson & Sons

Bought of J. & W. Beardmore.

Manufacturers of Steel Plates & Bars (Siemens Process) & Iron Plates & Bars for
Ships, Boilers, &c. & Marine Engine Forgings of all descriptions.
Iron & Steel Plates flanged for Boiler Fronts &c.



8/13.	1 220 	14 0 512.	3/4	141.
	1 396	14 10 32.	5/8	2 3 16.
	2 396	2 6 27	1'	4 1.
	1 229	2 7 0 90	1 1/16.	15 2 0.
	4 For rail to Harthpool			1 19 3 16.
	On truck at 20 4 68.			

4 $\left(\frac{5}{50} \right)$

Wm Hindmarsh
Lloyd's Surveyor
9-6-88



© 2021

Lloyd's Register
Foundation

504951-0165