

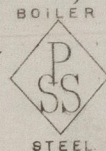
Mill Department.
London Office.
11 Queen Victoria St.
E.C.

Parkhead Iron & Steel
Forge & Rolling Mills.
Glasgow. 29th May 1886

Messrs J & W Richardson & Sons

Bought of J. & W. Beardmore.

Manufacturers of Steel Plates & Bars (Siemens Process) & Iron Plates & Bars for
Ships, Boilers, &c. & Marine Engine Forgings of all descriptions.
Iron & Steel Plates flanged for Boiler Fronts &c.



813

2	549	[B]	20	3 1/4	52 1/8	1 1/32	3	6	3	.
3	575		20	7 1/4	-	-	5	2	3	16
1	537		4	0	24 1/2	3/4	2	1	.	
1	457	OR	6	11	63	-	14	3	.	
1	457		14	0	51 1/2	-	16	3	8	
1	458	OR	7	0	70	1/16	16	.	12	
14	441, 450, 444, 445		17	10	29	2	12	3	12	
2	468, 9		14	12	50 1/2	3/4	1	13	.	
2	472	OR	7	0	63	1	19	0	20	
2	473, 6		6	11	-	-	1	19	1	16
1	484		-	-	-	3/4	14	3	.	
4	486, 7, 8, 9		6	1	71	1/16	2	3	3	.
2	488		6	4	52 1/8	-	16	3	16	
26	Per rail to Manchester		21 9 1 16							

on train to 22557. 1330.
18 7/60.

(49)

B. L. Hindmarsh
Lloyd's Surveyor
1-6-86



© 2021

Lloyd's Register
Foundation