

N^o 156. $\frac{3}{4}$ Bloucurry Sld report N^o 13524.
 - 160 $\frac{3}{4}$ New Guinea - - - 13564

ELEVATION
 N^o 156 x 60

Strong beams and webframes in engine boiler spaces as per Rule.

all frames extend to Bridge Winger

Donkey Boiler
 galley

Reverse Bars to Upper Deck

Water Ballast

plated over

Water Ballast

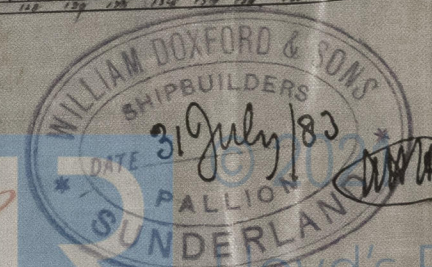
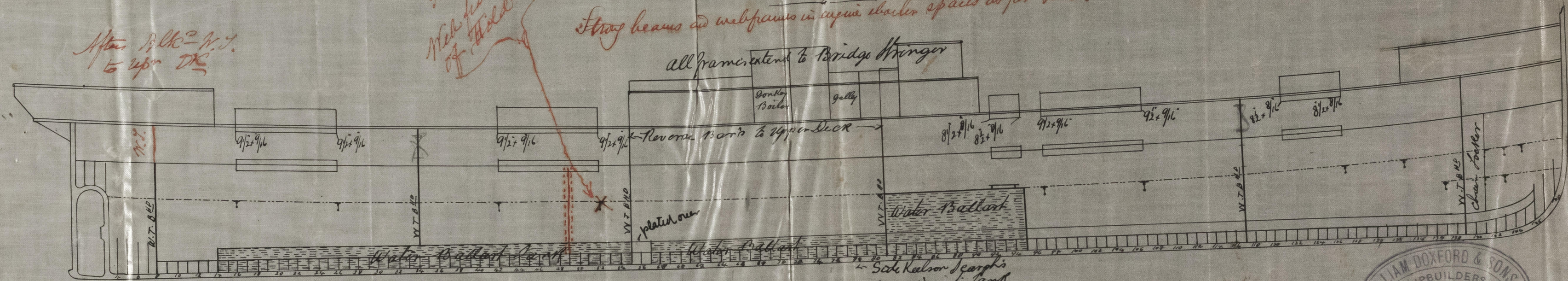
Side Keelson Seams
 3 spaces into Tank.

N^o 156 & 160.

AMENDED ELEVATION SHEWING ALTERED BULKHEADS
 AND HOLD BEAMS.

Feb 4/84.
 Web frame of Hold Beams

After Bulk = N.T.
 to upn DK



11.8.83
 R.P.B.
 J.H.

SLD950-0055

Lloyd's Register
 Foundation