

Boiler No 126  
 2/11/32

S.S. Penzance

List of Plates.

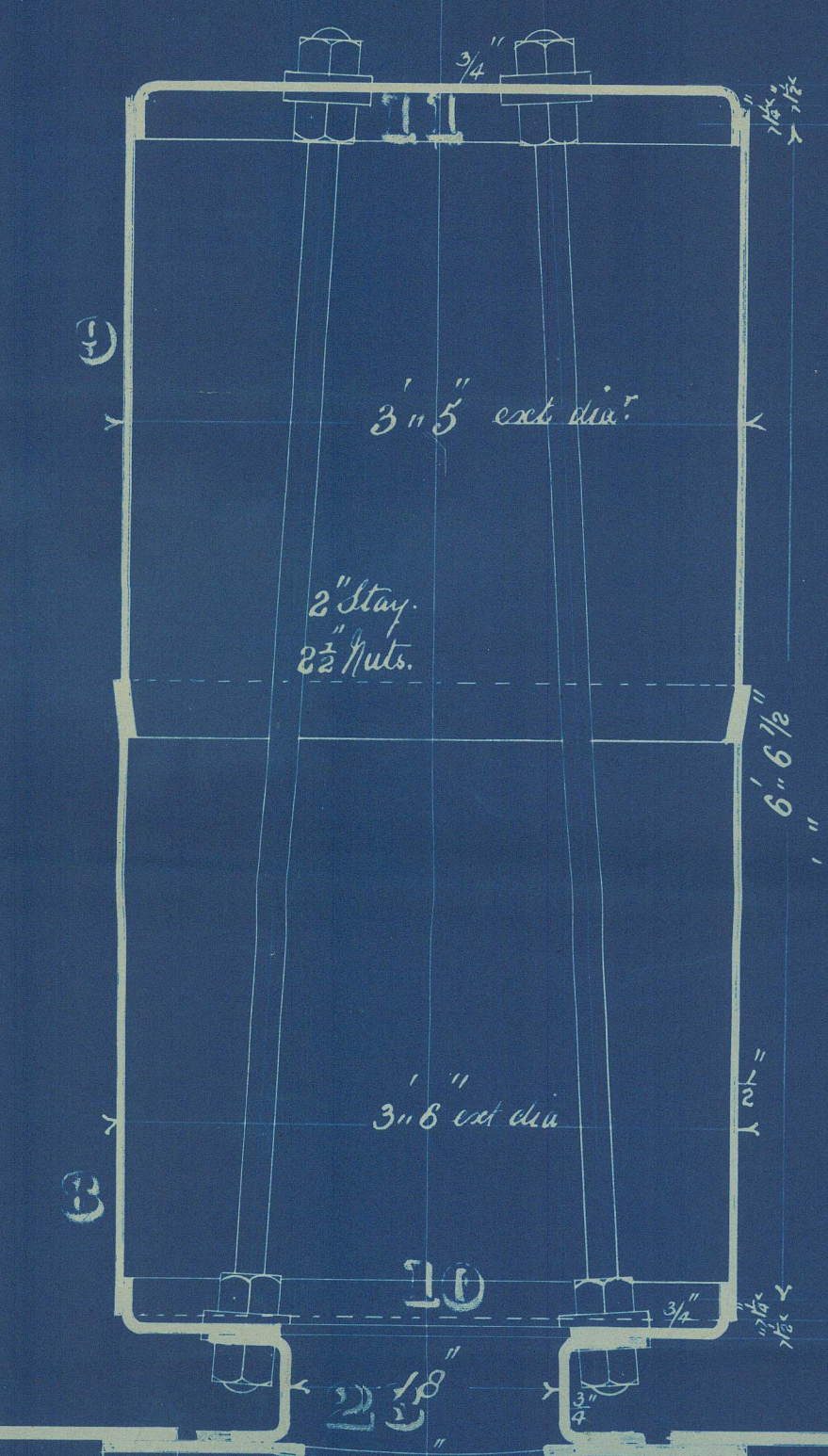
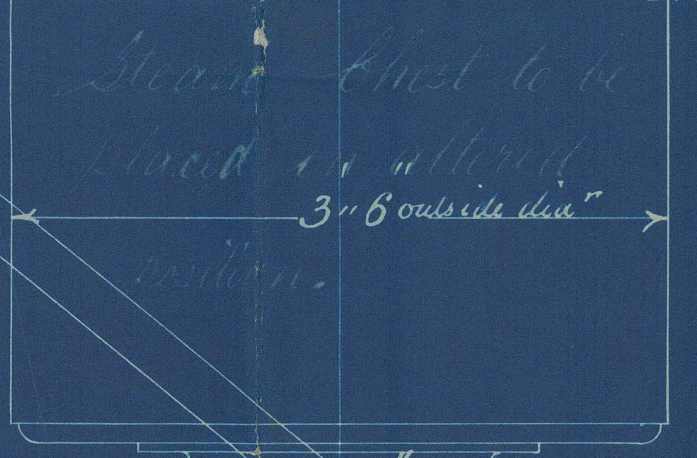
8 plates	19" 11 1/2" x 3" 7/8" x 1/8"	126	B
4 "	19" 10" x " x "	2	B
2 "	6" 9 3/4" rad 6" 5" x 7/8"	3	BBB
4 "	" x 4" 9 1/2" x 1 3/8"	4	BB
2 "	" x 5" 3" x 7/8"	5	"
2 plates	13" 8" x 4" 7" x "	6	"
2 "	" x 4" 4" x "	7	"
2 "	11" 3" x 3" 6" x 1/2"	8	B
2 "	11" 2" x " x "	9	"
2 "	3" 11" dia" x 1/4"	10	BB
2 "	3" 10" dia" x " x "	11	"
6 "	9" 4 1/2" x 4" 3" x 1/2"	12	BBB
12 "	3" 7 1/2" x 1" 0" x 1/8"		Bull Straps
12 "	2" 10" x 1" 0" x "		

List of Turnley Plates.

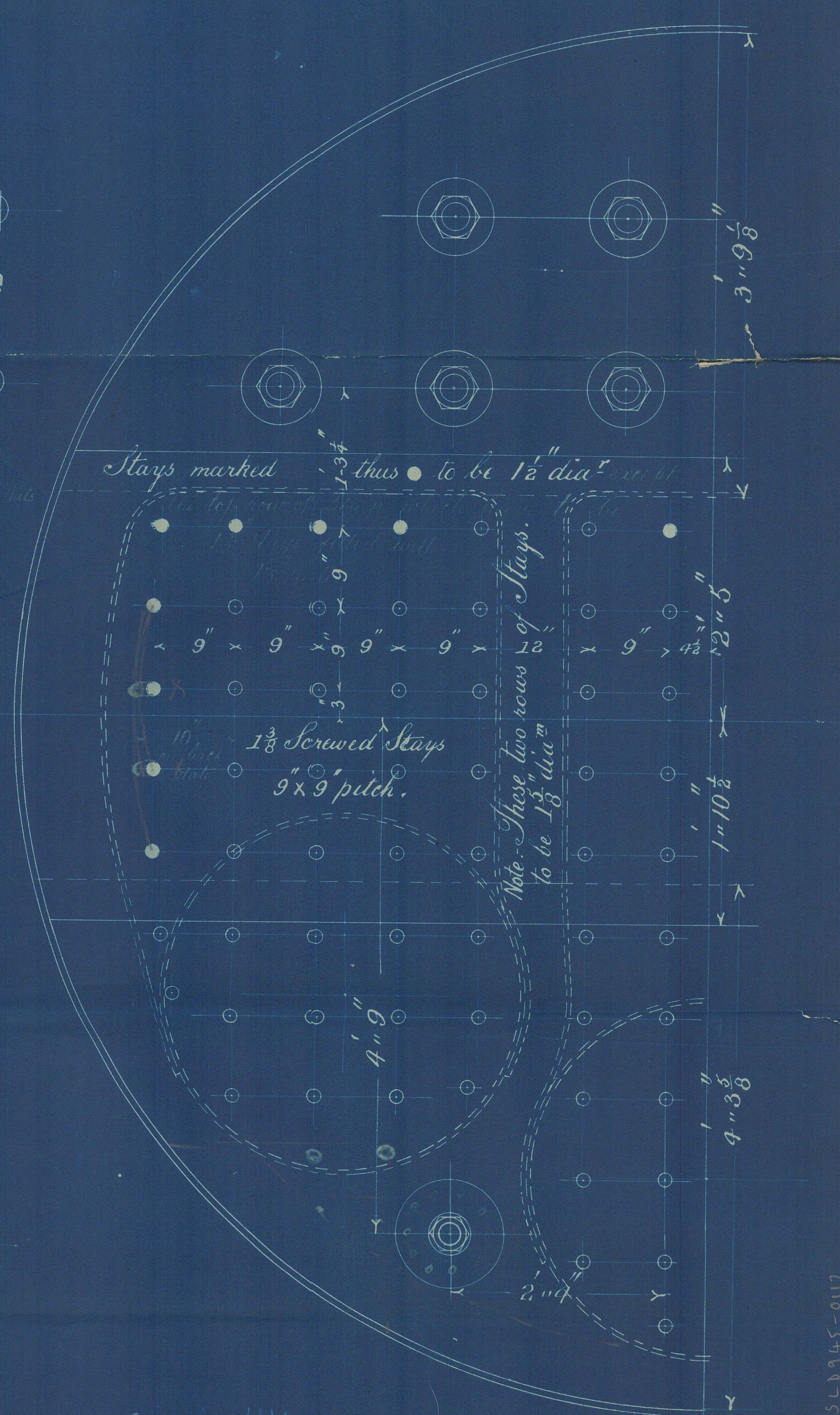
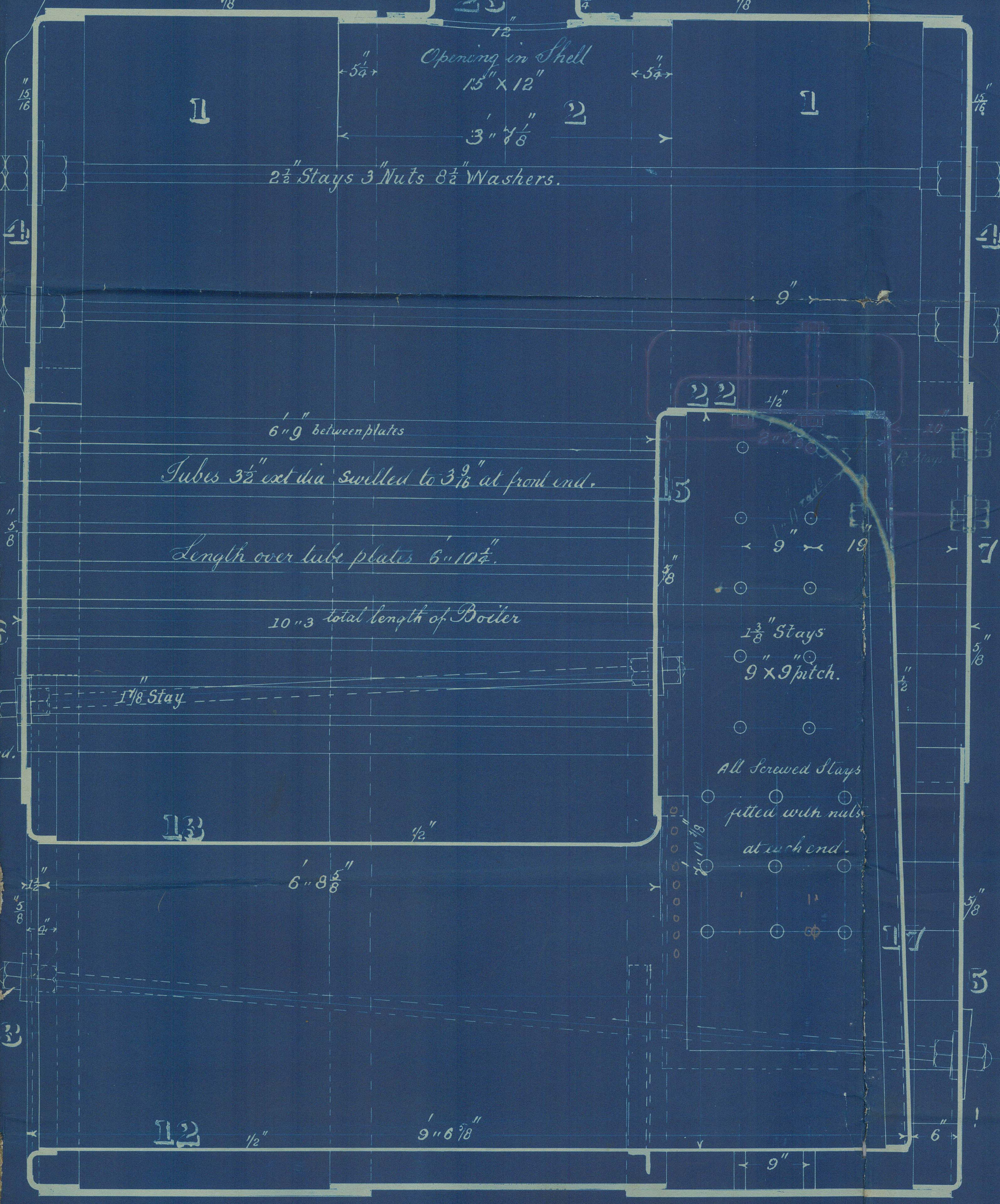
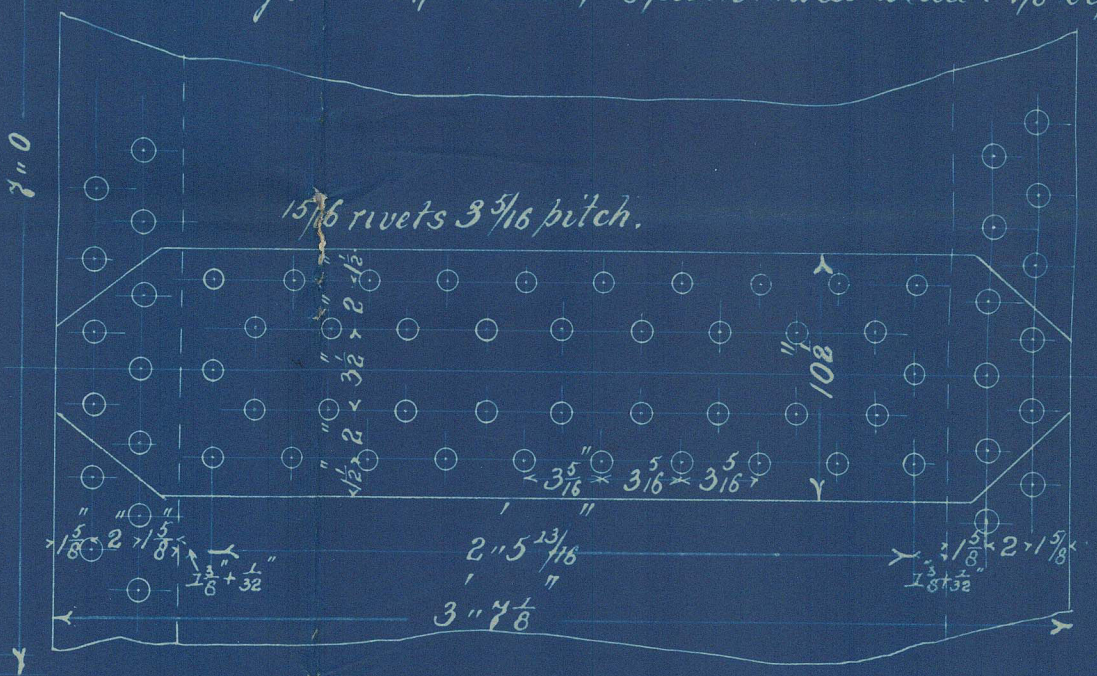
4 plates	4" 11" x 6" 2" x 1/2"	13	"
4 "	4" 0" x 3" 6" x 7/8"	14	"
2 "	4" 6 1/2" x 3" 0 1/2" x "	15	"
4 "	6" 9" x 4" 1 1/2" x 1/2"	16	"
2 "	8" 1 1/2" x 3" 0" x "	17	"
4 "	4" 8" x 2" 6" x "	18	"
4 "	4" 10 1/2" x " x "	19	"
4 "	5" 5" x 2" 4 1/2" x "	20	"
4 "	6" 6" x 2" 6" x "	21	"
2 "	4" 9" x 2" 1 1/2" x "	22	"
2 "	4" 8 1/2" x 1" 7" x 3/4"	23	"

DIMENSIONS.

LENGTH OF FIRE BARS	5" 0"
AREA OF FIRE GRATE	48.75 sq ft in each boiler
DIAM. OF TUBES OUTSIDE	3 1/2"
LENGTH OF TUBES	6" 9"
NO. OF TUBES	148 in one boiler 296 in two boilers
SURFACE OF TUBES	925 sq ft in one boiler 1850 in two boilers
TOTAL HEATING SURFACE	1400 " " " 2800 " " "
WORKING PRESSURE	80 lbs per sq in
DIAM. OF SAFETY VALVE	



Particulars of Rivetting  
 Longitudinal seams to be double riveted double butt straps 19/16" rivets 3 7/8" pitch holes drilled 1 1/16"  
 Circumferential seams to be double riveted lap joints 1 1/8" rivets 3 3/8" pitch holes drilled 1 1/16" dia  
 Steam Chest.  
 Longitudinal seams to be double riveted lap joints 1 1/8" rivets 3 3/8" pitch holes drilled 7/8"  
 Circumferential seams single riveted lap joints 1 1/8" rivets 2 3/8" pitch holes drilled 7/8" before bending.



BOILERS No 126

SCALE 1/4 INCH TO A FOOT

Wilson's Sunderland 7 1/2" 35" long  
 shown Gratham 1/2" 1st vessel.

CHARLES BULLOCK  
 ENGINEER

2/19/32



Roll 126

SLD945-0112



© 2021

Lloyd's Register  
Foundation