

Yark Section Arrangement. S.S. No. 61  
Scale  $\frac{1}{16}$ " = 1 foot.

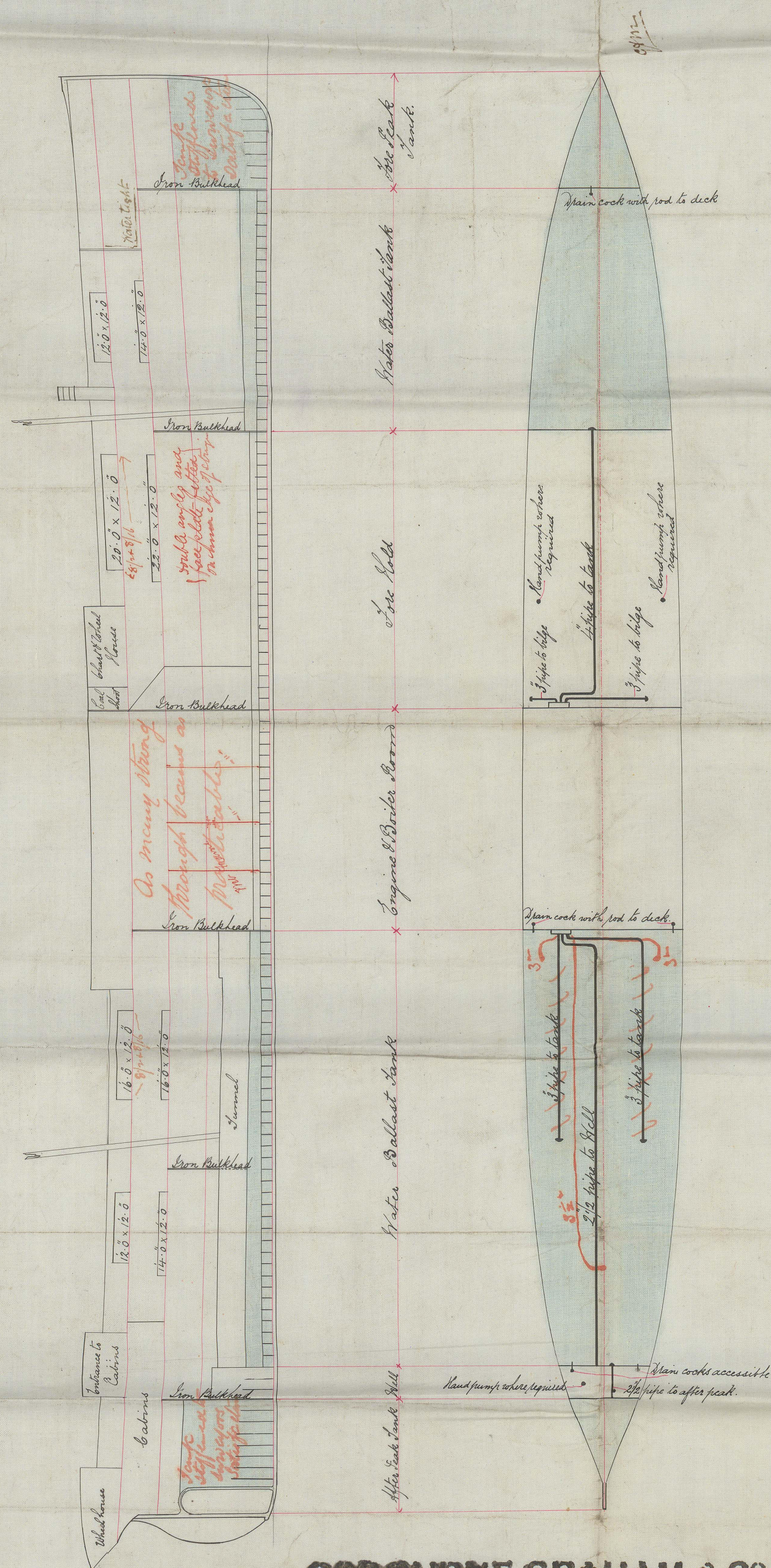
SS N° 61

Perrygent Std. report No 13.111.

### Dimensions.

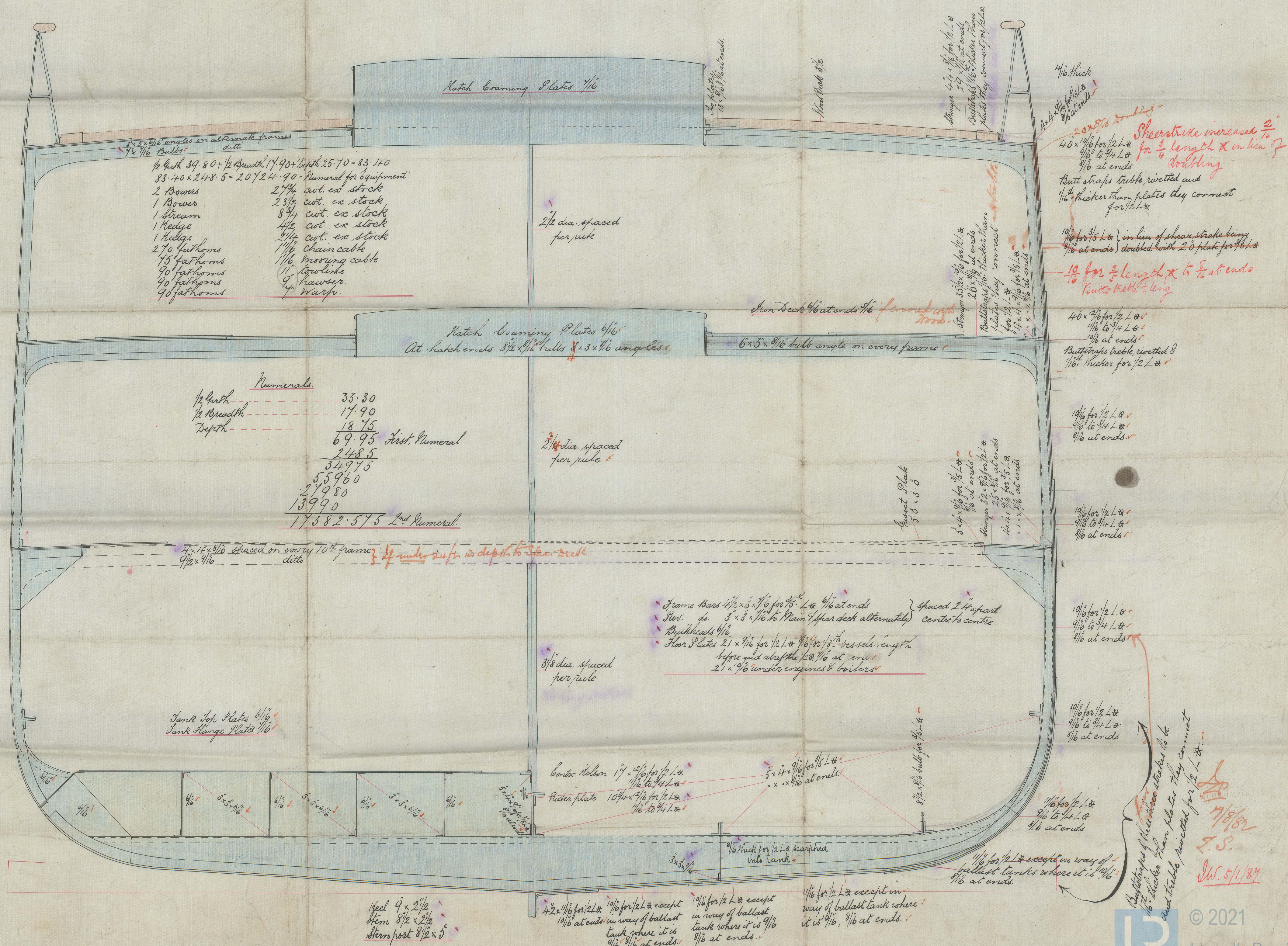
LENGTH per Register ----- 250.0  
BREADTH ----- 36.0  
DEPTH  $\frac{1}{2}$  Main from top of floors 14' 6" for Star Deck 24' 6"  
CLASS ----- 100A  
Depths to Length 1225  
Breaths to Length 690

Spar Deck Rule.



IRON SHIPHUILDERS.

HYLTON  
near SUNDERLAND. August 15<sup>th</sup> 1882



© 2021  
Lloyd's Register  
91.0945-01034  
Foundation