

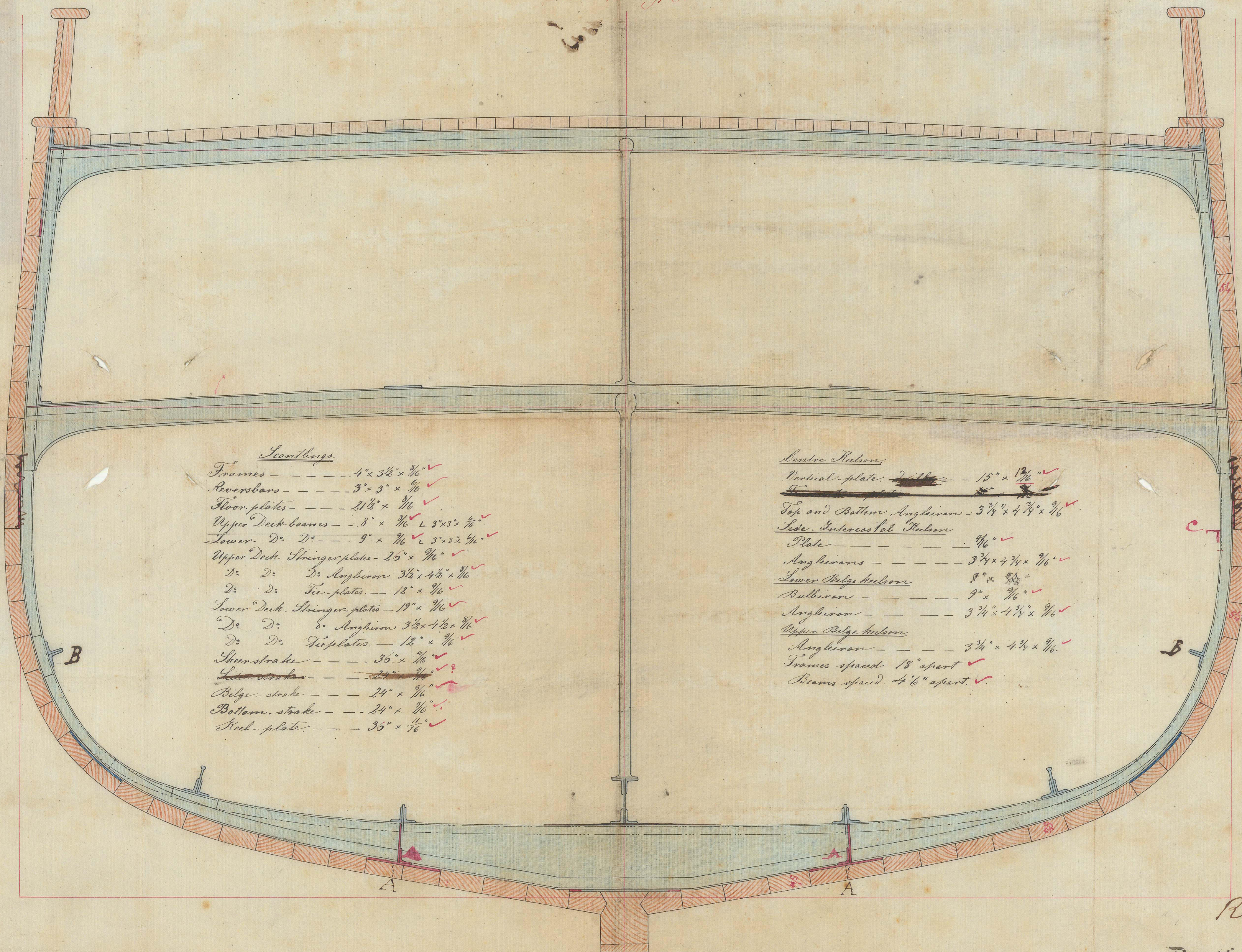
Midship section for Combination Ship N° 30

Scale $\frac{1}{2}$ inch = 1 foot

Glen Osmond
Std No 9131

Length between Perps	172' 3"
Breadth moulded	32' 8"
Do extreme	33' 6 1/2"
Depth moulded	20' 4"
Do of Hold	19' 1"
Tonnage under Deck	680 Tons

During is the
Ketch fitted
in the ship



Scantlings

Frames	4" x 3 1/2" x 3/16"
Reversbars	3" x 3" x 1/4"
Floor plates	21 1/2" x 1/4"
Upper Deck beams	8" x 1 1/2" x 3/16" L 3' x 3 1/2" x 1/4"
Lower D. D.	9" x 1 1/2" x 3/16" L 3' x 3 1/2" x 1/4"
Upper Deck Stringer plates	15" x 1/4"
D. D. D. Angles	3 1/2" x 4 1/2" x 1/4"
D. D. Tee plates	12" x 1/4"
Lower Deck Stringer plates	19" x 1/4"
D. D. D. Angles	3 1/2" x 4 1/2" x 1/4"
D. D. Tee plates	12" x 1/4"
Inner strake	35" x 1/4"
Outer strake	24" x 1/4"
Belge strake	24" x 1/4"
Bottom strake	24" x 1/4"
Keel plate	35" x 1 1/2"

Lower Hull

Vertical plate	15" x 1 1/2"
Top and Bottom Angles	3 1/4" x 4 1/4" x 1/4"
Side Intercostal Plates	1/4"
Plate	1/4"
Angles	3 1/4" x 4 1/4" x 1/4"
Lower Belge keelson	8" x 1 1/2"
Keelson	9" x 1 1/2"
Angles	3 1/4" x 4 1/4" x 1/4"
Upper Belge keelson	3 1/4" x 4 1/4" x 1/4"
Angles	3 1/4" x 4 1/4" x 1/4"
Frames spaced	18" apart
Beams spaced	4' 6" apart

Rev 26/12/66 & 18/1/67

Deptford Yard
Sunderland.

27/12-66