

PRINCIPAL DIMENSIONS

LENGTH S.P. 346.0
BREADTH EXT. 49.6
M.P. 49.2 1/2
DEPTH MOULDED 27.1 1/2

S. S. N^o 457. 458
444. 510/106

THREE DECK RULES

SCALE 1/2" = 1 FOOT

CLASS 100A LLOYDS

NUMERALS

HALF BREADTH M.P. 24.60
HALF GIRTH 49.35
DEPTH AS PER RULE 28.94
LESS 7.00
THREE OF FRAME N^o 95.82
LENGTH AS PER RULE 344
PLATING N^o 3298616

PROPORTIONS

DEPTHS TO LENGTH 11.38

NOTE: BULB ANGLE FRAMES

CARRIED TO BRIDGE DECK

POOP & FORECASTLE SIDES 7/20

BRIDGE SIDES 10/20

TREBLE RIV. OVERLAPPED BUTTS

IN WAY OF BRIDGE

POOP & FORECASTLE SIDES 7/20

BRIDGE SIDES 10/20

DOUBLE RIV. OVERLAP BUTTS

IN WAY OF BRIDGE

DOUBLE RIV. BEAMS

SHEERSTRAKE 4/20

TO 3/4 LENGTH

QUADRUPLE RIV. OVERLAP BUTTS

CLEAR OF BRIDGE TO HALF LENGTH

TREBLE IN WAY OF BRIDGE & AT ENDS

SHEERSTRAKE DOUBLED AT ENDS

OF BRIDGE AS PER PROFILE.

12.9 2

20 + 20 FOR 1/2 LENGTH

OUTSIDE OF BRIDGE

BUTTS OVERLAPPED &

TREBLE RIVETTED

12.9 1

20 + 20 BETWEEN PEAKS

FOR 25 SPACING

12.9 1

20 + 20 BETWEEN PEAKS

FOR 25 SPACING

12.9 1

20 + 20 BETWEEN PEAKS

FOR 25 SPACING

12.9 1

20 + 20 BETWEEN PEAKS

FOR 25 SPACING

12.9 1

20 + 20 BETWEEN PEAKS

FOR 25 SPACING

12.9 1

20 + 20 BETWEEN PEAKS

FOR 25 SPACING

12.9 1

20 + 20 BETWEEN PEAKS

FOR 25 SPACING

12.9 1

20 + 20 BETWEEN PEAKS

FOR 25 SPACING

12.9 1

20 + 20 BETWEEN PEAKS

FOR 25 SPACING

12.9 1

20 + 20 BETWEEN PEAKS

FOR 25 SPACING

12.9 1

20 + 20 BETWEEN PEAKS

FOR 25 SPACING

12.9 1

20 + 20 BETWEEN PEAKS

FOR 25 SPACING

12.9 1

20 + 20 BETWEEN PEAKS

FOR 25 SPACING

12.9 1

20 + 20 BETWEEN PEAKS

FOR 25 SPACING

12.9 1

20 + 20 BETWEEN PEAKS

FOR 25 SPACING

12.9 1

20 + 20 BETWEEN PEAKS

FOR 25 SPACING

STRINGER PLATE 47.10

32.920 AT ENDS

BRIDGE STRINGER ANGLE 3/2.3/2.20

POOP & FORECASTLE 3.3.7/20

UNDER 44.0

BEAMS AS PER PROFILE

BEAM KNEES

AS PER PROFILE

UPPER DECK

STRINGER PLATE 72.20 TO 43.8/20

QUADRUPLE RIVETTED

OVERLAP BUTTS

FOR HALF LENGTH CLEAR OF BRIDGE

TREBLE IN WAY OF BRIDGE & AT ENDS

STRINGER ANGLES 3/2.3/2.20

4/2.4/2.11/20

IN WELLS

ZEDS IN WAY OF HATCHES 8.3/2.3/2.20

UNDER 47.0

BEAMS AS PER PROFILE

UPPER DECK

BEAM KNEES 3 TIMES

DEPTH OF BEAM AND AS PER PROFILE

ARCHED

WEBS SPACED AS PER PROFILE

PLATE 20 FACE BAR 6/2.4/2.20

10.9

9.8

9.8

9.8

9.8

9.8

9.8

9.8

9.8

9.8

9.8

9.8

9.8

9.8

9.8

9.8

9.8

9.8

9.8

9.8

9.8

9.8

9.8

9.8

9.8

9.8

9.8

9.8

9.8

9.8

9.8

9.8

9.8

9.8

9.8

9.8

9.8

9.8

9.8

9.8

9.8

9.8

9.8

9.8

9.8

9.8

9.8

POOP DECK 5/16 IRON

BRIDGE 5/16 IRON

FORECASTLE WOOD

THIS STRAKE 6/16 IN WAY

OF BRIDGE

TEE BAR 5.4.9/20

10/20 SIDE COAMINGS 20 END COAMINGS

HATCHES 17.11 WIDE

WEB PLATES FITTED

NO FORE & AFTERS

6.6.30 AT SIDES & ROUND CORNERS

6.6.30 AT ENDS

CHANNEL IN WAY OF HATCHES

6.3/2.3/2.20

OR EQUIVALENT ANGLES

GIRDER BRACKETED TO HATCH END BEAMS

AND INTERCOSTALS

FRAMES

SPACED 24 IN PEAKS 25 BETWEEN PEAKS

FRAMES 9.3/2.20 BULB ANGLES

FRAMES OR WEBS 9.3/2.20 BULB ANGLES WITH FACE BAR 6/2.4/2.20

AFTER END FRAMES 5/2.3/2.20

REVERSE FR 4/2.3/2.20

FORE END BULB ANGLES 6/2.3/2.20

BOTTOM FRAMES ON WEBS 3/2.3/2.20

NOT ON 6.3/2.20

BULKHEADS 20 FLANGED AS PER PROFILE

BULKHEAD FRAMES 6.6.20

BULKHEADS CONNECT TO TANK TOP 6.6.20

WITH BRACKETS TO STIFFENERS

HOLD BEAMS AS PER PROFILE

PLATE 13.1/20. 4 ANGLES 6.4.9/20

TANK

TANK WEBS ON ALTERNATE FRAMES

IN HOLDS 9/20 IN BOILER SPACE 9/16 IRON

ON EVERY FRAME 1 ENGINE ROOM &

FORWARD OF 3/5 LENGTH 8/20

INTERCOSTAL GIRDERS 9/20 IN BOILER SPACE 9/16 IRON

TANK TOP IN HOLDS 20 1/20 INTERMEDIATE STIFFENERS

ENGINE ROOM 8.8/16

BOILER 10/16

TANK TOP BUTTS OVERLAP & DOUBLE RIVETTED

TANK TOP REDUCED 20 WHERE FLOORS EVERY FRAME

ALL CONNECTIONS IN DOUBLE BOTTOM 3/2.3/2.20

CONNECT IN BOILER ROOM (EXCEPT SHELL LUGS) 3/2.3/2.20

DOUBLE REVERSE ONLY IN ENGINE SPACE & UNDER BOILER BEARERS

BALTIC PINE CEILING

5/2 THICK

DOUBLE RIV. BEAM

DOUBLE RIV. BEAM

DOUBLE RIV. BEAM

DOUBLE RIV. BEAM

DOUBLE RIV. BEAM

DOUBLE RIV. BEAM

DOUBLE RIV. BEAM

DOUBLE RIV. BEAM

DOUBLE RIV. BEAM

DOUBLE RIV. BEAM

DOUBLE RIV. BEAM

DOUBLE RIV. BEAM

DOUBLE RIV. BEAM

DOUBLE RIV. BEAM

DOUBLE RIV. BEAM

DOUBLE RIV. BEAM

DOUBLE RIV. BEAM

DOUBLE RIV. BEAM

DOUBLE RIV. BEAM

DOUBLE RIV. BEAM

DOUBLE RIV. BEAM

DOUBLE RIV. BEAM

DOUBLE RIV. BEAM

DOUBLE RIV. BEAM

DOUBLE RIV. BEAM

DOUBLE RIV. BEAM

TEE BAR 5.4.9/20

10/20 SIDE COAMINGS 20 END COAMINGS

HATCHES 17.11 WIDE

WEB PLATES FITTED

NO FORE & AFTERS

6.6.30 AT SIDES & ROUND CORNERS

6.6.30 AT ENDS

CHANNEL IN WAY OF HATCHES

6.3/2.3/2.20

OR EQUIVALENT ANGLES

GIRDER BRACKETED TO HATCH END BEAMS

AND INTERCOSTALS

FRAMES

SPACED 24 IN PEAKS 25 BETWEEN PEAKS

FRAMES 9.3/2.20 BULB ANGLES

FRAMES OR WEBS 9.3/2.20 BULB ANGLES WITH FACE BAR 6/2.4/2.20

AFTER END FRAMES 5/2.3/2.20

REVERSE FR 4/2.3/2.20

FORE END BULB ANGLES 6/2.3/2.20

BOTTOM FRAMES ON WEBS 3/2.3/2.20

NOT ON 6.3/2.20

BULKHEADS 20 FLANGED AS PER PROFILE

BULKHEAD FRAMES 6.6.20

BULKHEADS CONNECT TO TANK TOP 6.6.20

WITH BRACKETS TO STIFFENERS

HOLD BEAMS AS PER PROFILE

PLATE 13.1/20. 4 ANGLES 6.4.9/20

TANK

TANK WEBS ON ALTERNATE FRAMES

IN HOLDS 9/20 IN BOILER SPACE 9/16 IRON

ON EVERY FRAME 1 ENGINE ROOM &

FORWARD OF 3/5 LENGTH 8/20

INTERCOSTAL GIRDERS 9/20 IN BOILER SPACE 9/16 IRON

TANK TOP IN HOLDS 20 1/20 INTERMEDIATE STIFFENERS

ENGINE ROOM 8.8/16

BOILER 10/16

TANK TOP BUTTS OVERLAP & DOUBLE RIVETTED

TANK TOP REDUCED 20 WHERE FLOORS EVERY FRAME

ALL CONNECTIONS IN DOUBLE BOTTOM 3/2.3/2.20

CONNECT IN BOILER ROOM (EXCEPT SHELL LUGS) 3/2.3/2.20

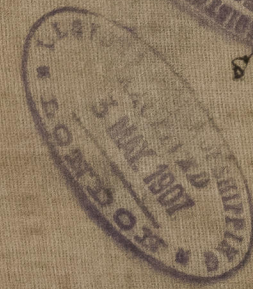
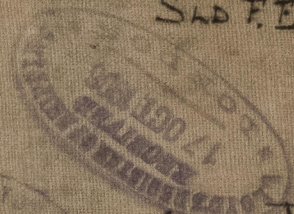
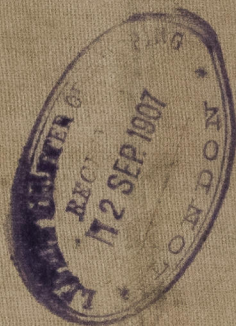
X SECTION

5.5.457.

4 No 458

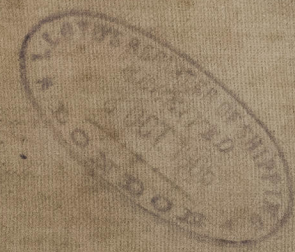
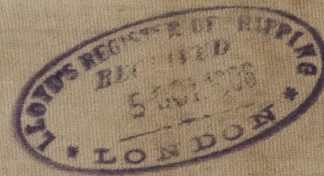
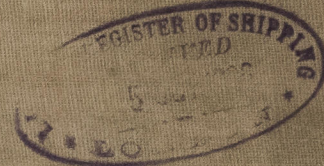
s/s. "ARNELL"

Sld F.E. RM. No. 23428.



s.s. Brinkburn

Sld F.E. 24065

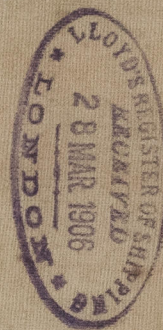


SLD1028-0135



© 2021

Lloyd's Register
Foundation



© 2021

Lloyd's Register
Foundation