

SCHEDULE L

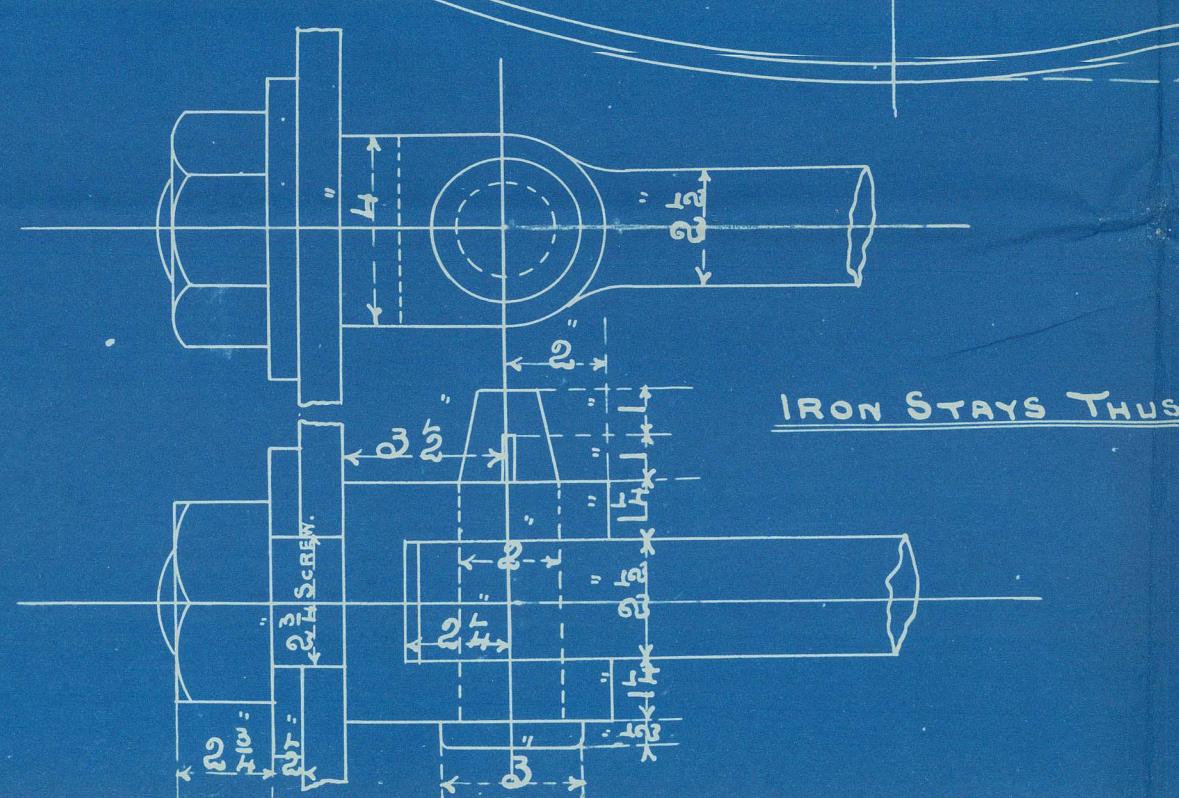
BOILER.

Grain 17/8/98

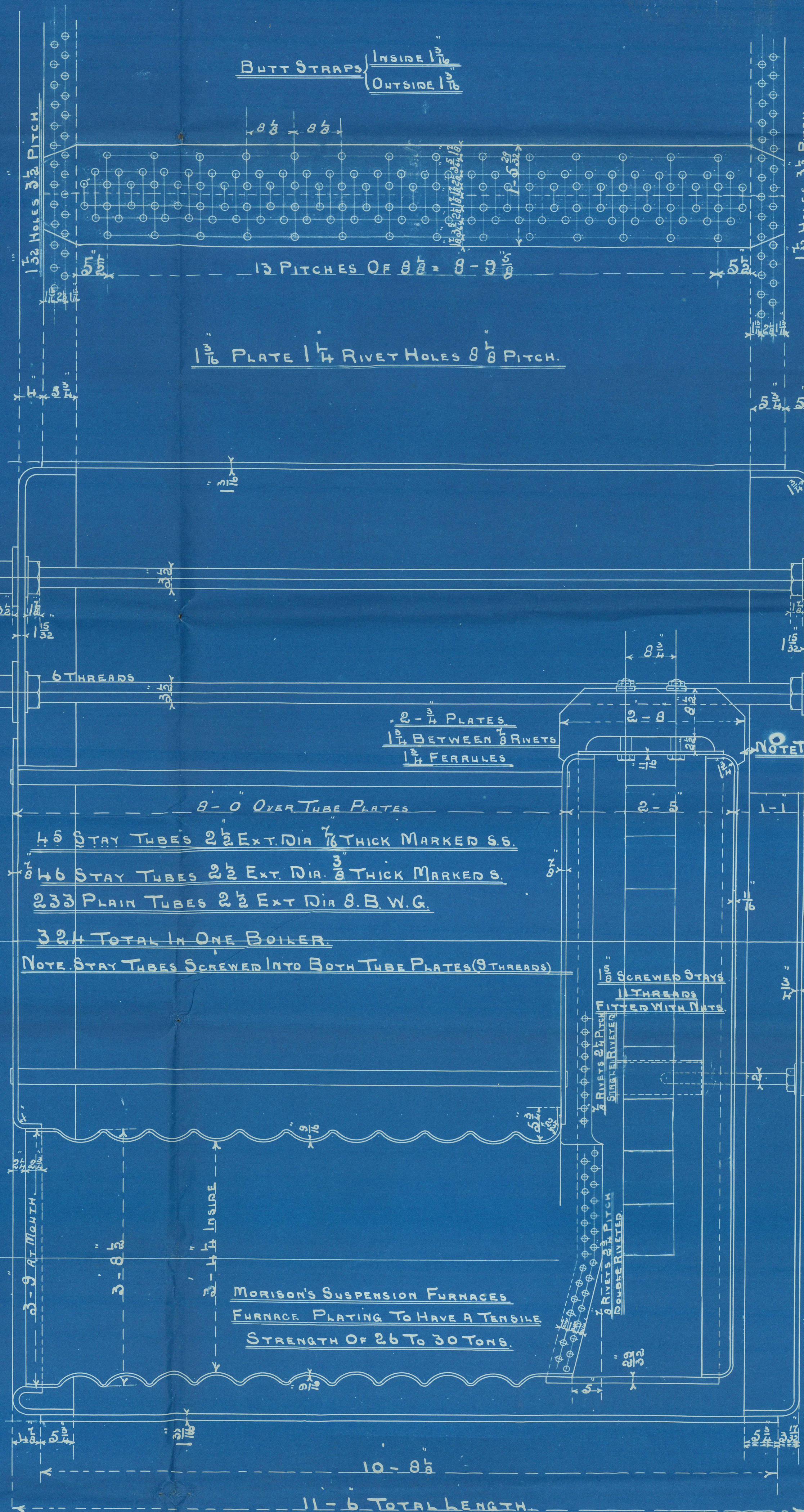
FOR POSITION OF MANHOLES IN SHELLS FOR
FORWARD BOILERS SEE SKETCH, ABOVE.

1 BOILER MANHOLE THUS
1 BOILER MANHOLE TO OPPOSITE HAND THUS

2. W. A.
MANHOLE
14 1/2 x 11
FLANGED.



IRON STAYS THUS



WORKING PRESSURE = 180 LBS.

$$\text{TEST} \quad \text{---} = 360 \text{ ---}$$

ALL PLATES & STAYS TO BE OF STEEL EXCEPT OTHERWISE SHOWN.

TENSILE STRENGTH OF SHELL PLATES & BUTT STRAPS TO
BE NOT LESS THAN 30 TONS.

STAYS MARKED THUS $\bigcirc 1\frac{7}{8}$ DIA (9 THREADS)

ALL OTHERS $1\frac{5}{8}$ DIA (11 THREADS).

NOTE. ALL STAYS SCREWED & FITTED WITH NUTS

4. Thus

CONTRACT 1307.

© 2021

N. E. M. E. Co. LIMITED, WALLSEND.

ENCLOSURE

FOR

*Rep Lloyd's Register
Foundation*

SLD1018-0233 2/2 -



North Eastern M.C. 1307.

4 M.B. 18060 M.P.

Shell $\frac{30}{32}$ tons.

5483

$\frac{8}{s}$ "Wilcannia"

N^o 5483

Lloyd's Test

360 $\frac{7}{16}$

23-3-99 R.H

Newcastle N^o 38549

Sunderland. N^o 19756



© 2021

Lloyd's Register
Foundation

SLD1078-0233 1/2