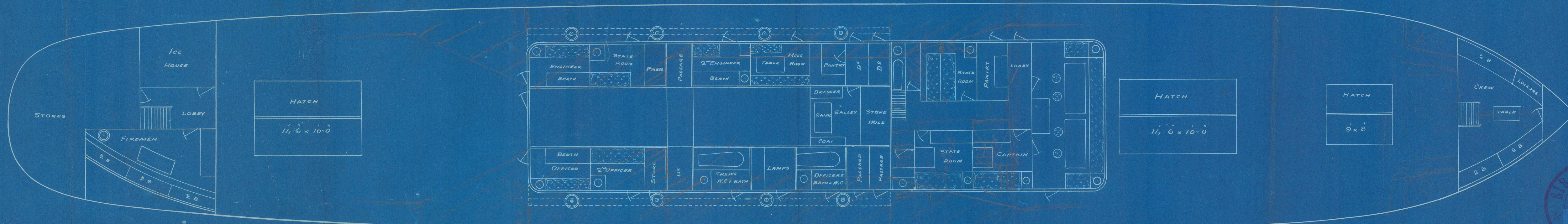
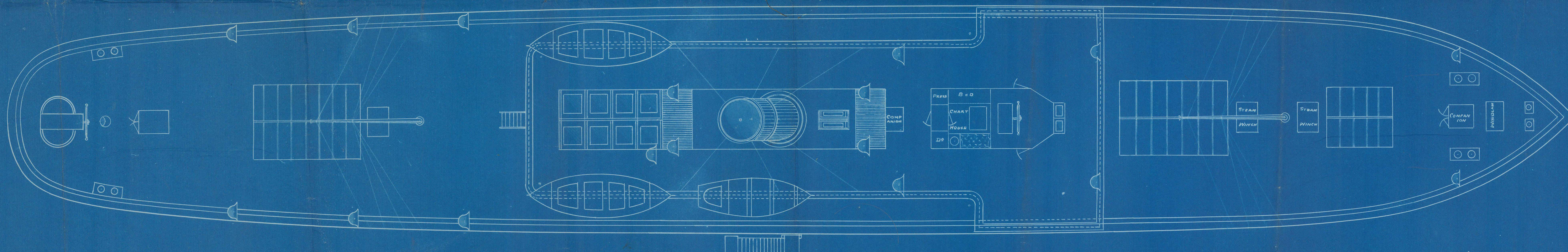


S/S NORMAN
late
S/S Albert Emmott
 14-4-99

DIMENSIONS		FEET. INCH.
LENGTH OVERALL,-----		209-6
" B.P.,-----		200-0
BREADTH MOULDED,-----		30-0
DEPTH MOULDED TO SPAR DECK,--		22-2
" " TO MAIN DECK,--		14-10½
" OF HOLD,-----		12-6

SCALE 1/8 INCH = 1 FOOT.



SIR JAMES LAING & SONS, LIMITED
 Date 5/4/99
 DRAWING OFFICE
 150

SEPIOB - 0221

General Arrangement
of the Ss "Albert Dumois"



© 2021

Lloyd's Register
Foundation

SLD/018-0221