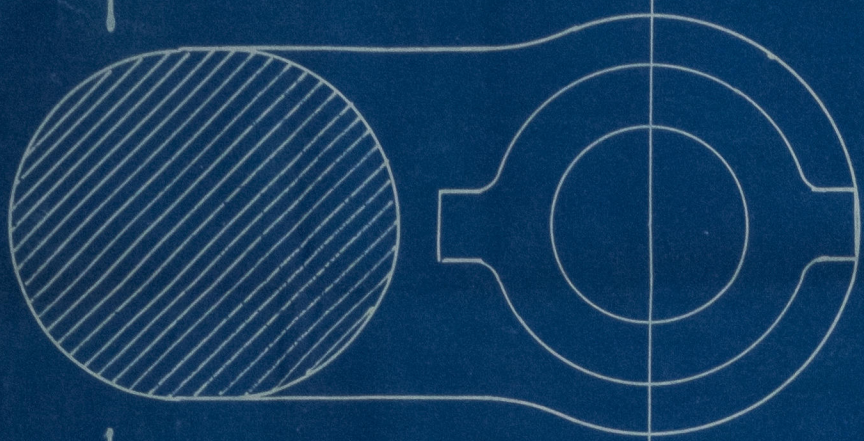
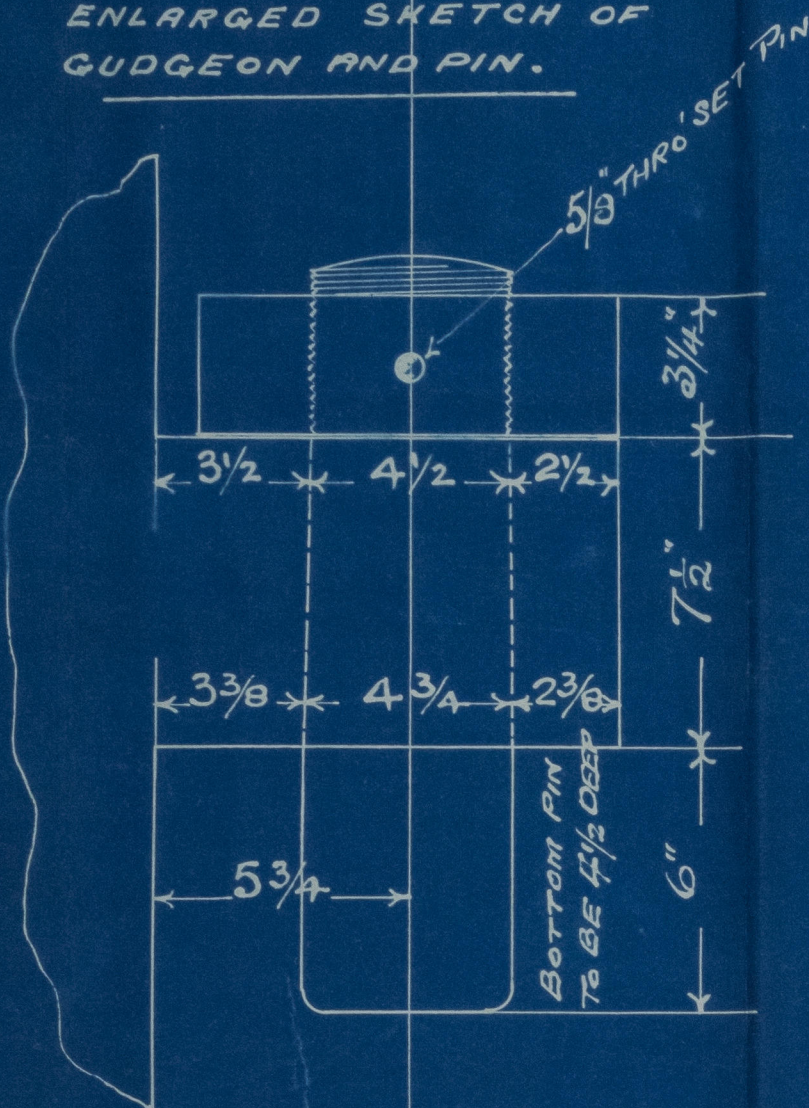


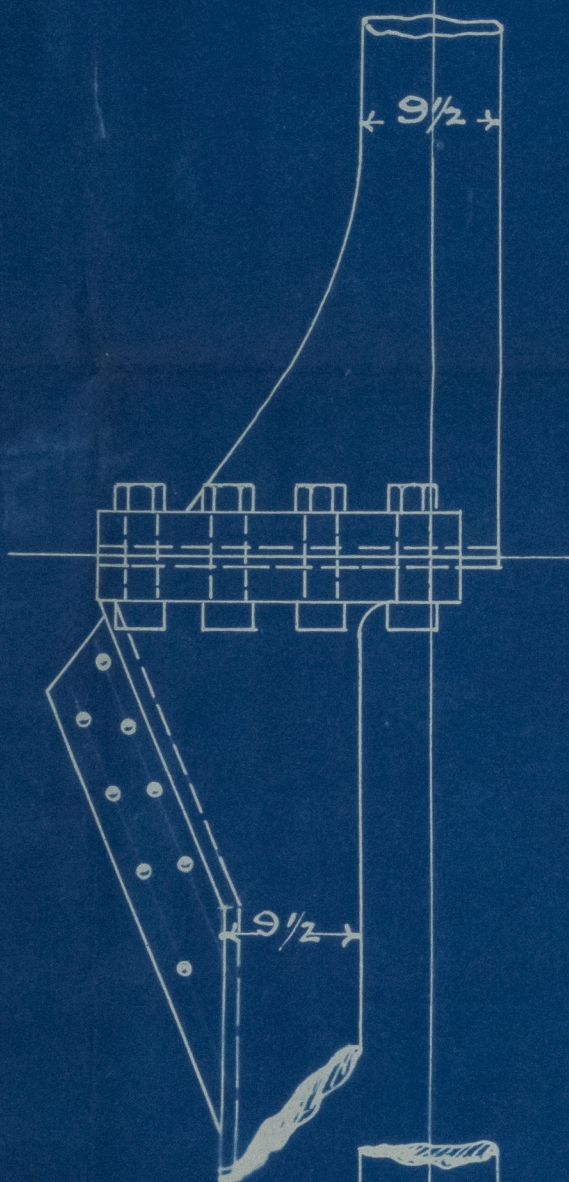
ENLARGED SKETCH SHOWING  
TOP OF PIN AND NUT.



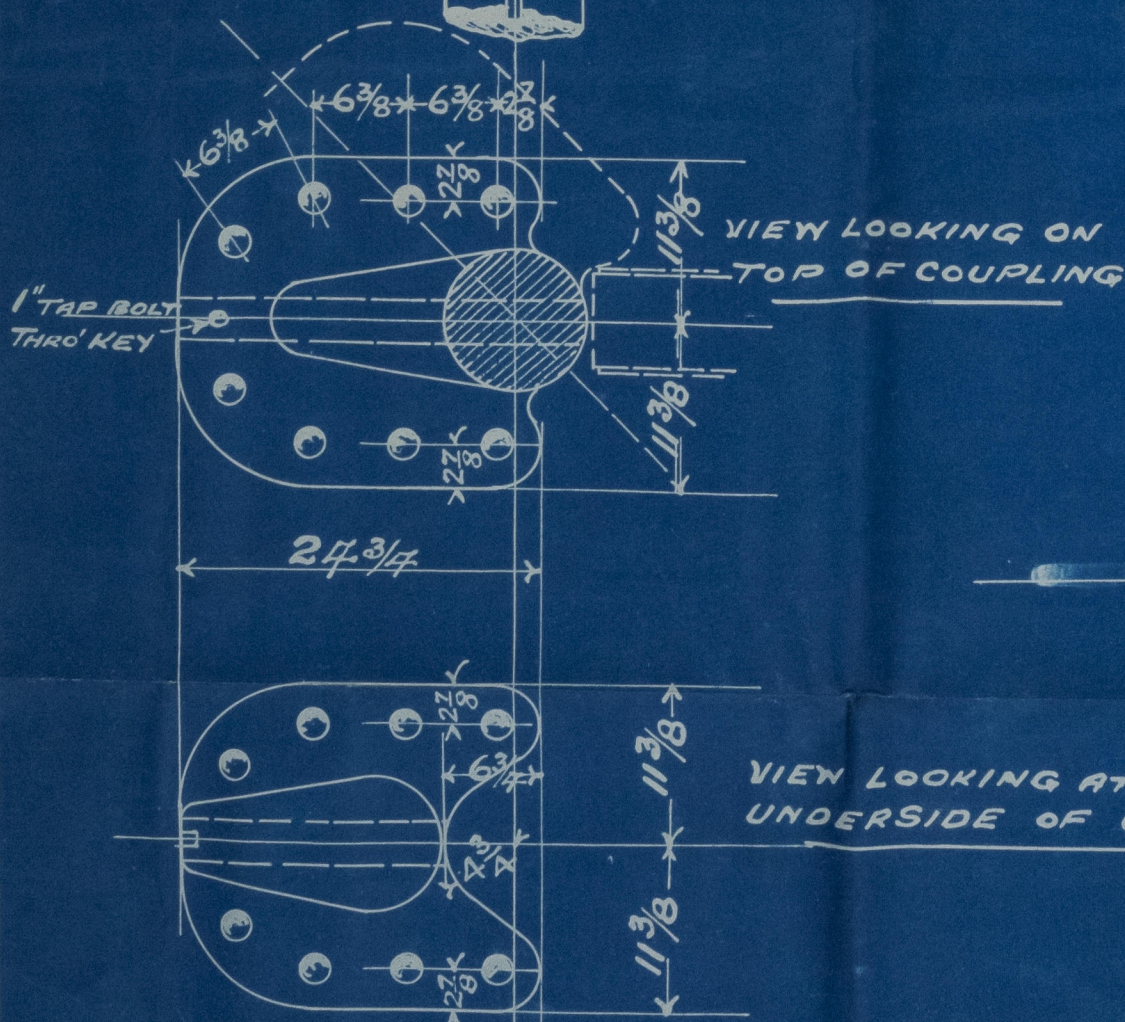
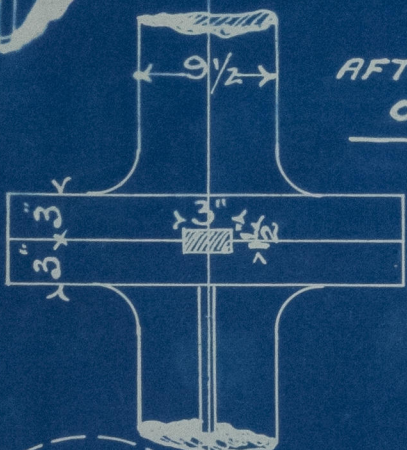
ENLARGED SKETCH OF  
GUDGEON AND PIN.



SIDE VIEW OF COUPLING



AFTER END VIEW  
OF COUPLING.

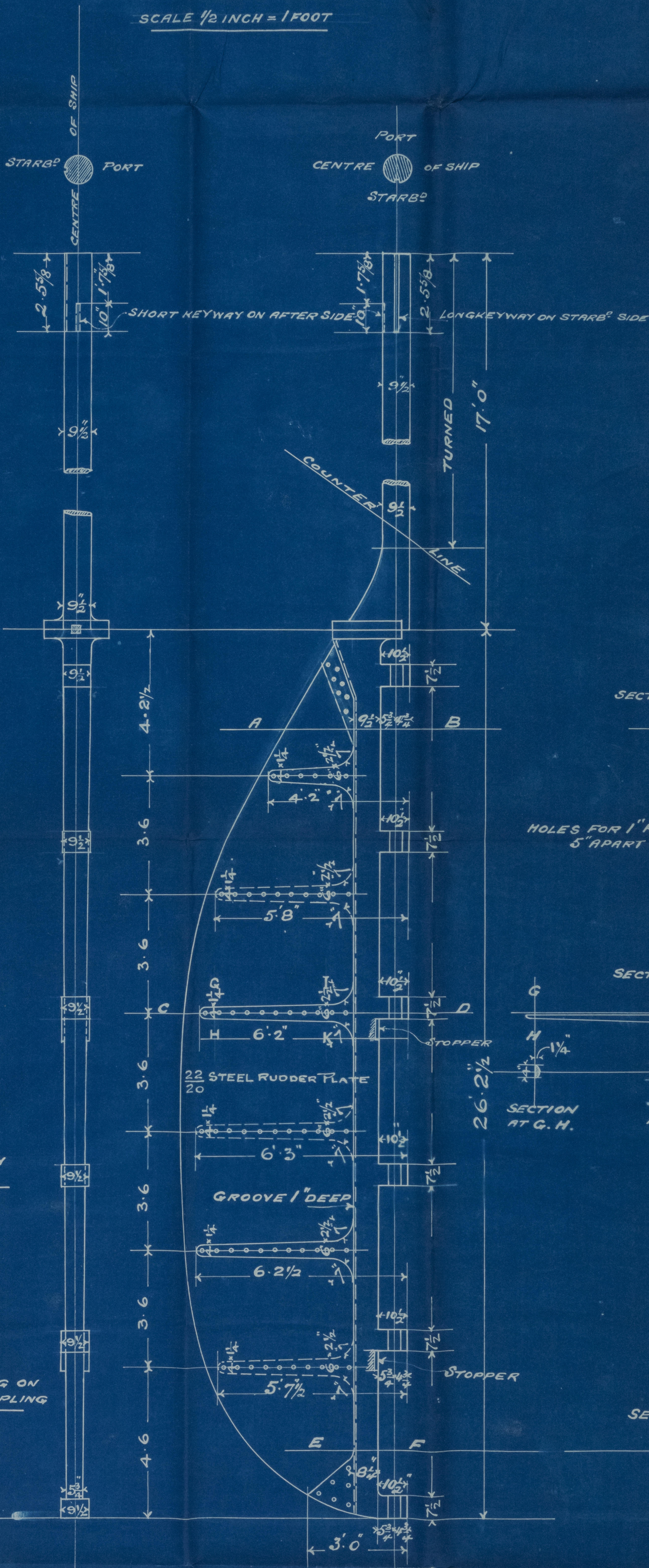


EIGHT 2 1/4" TURNED BOLTS  
IN COUPLING.

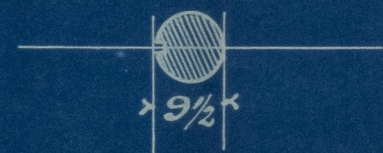
# CAST STEEL RUDDER FRAME

S.S. 283 & 4.

SCALE 1/2 INCH = 1 FOOT

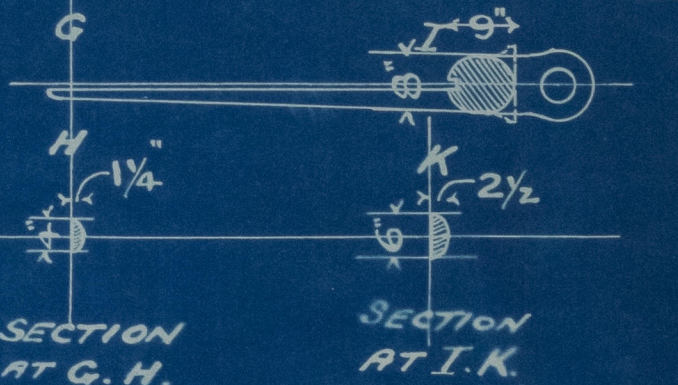


SECTION AT A. B.



HOLES FOR 1" RIVETS SPACED  
5" APART CENTRES

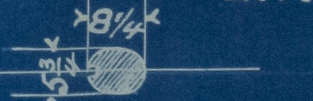
SECTION AT C. D.



SECTION  
AT G. H.

SECTION  
AT I. K.

SECTION AT E. F.



SHORT BROTHERS  
SHIPBUILDERS

SUNDERLAND

PLAN No 51914



Short Bros.

S. S. No 283 & 84  
*also No 287.*

Cast-Steel Rudder

~~This is a duplicate rudder  
of the same Builders No 276.~~

S. S. Anglo-Australian

Sunderland. No 19685

S. S. "South Australia"

Sunderland. No 19829.

S. S. "Winkfield"

Sunderland. No 20032



© 2021

Lloyd's Register  
Foundation

SLD1018-0007