

BOILERS No 607

3 OFF

GEORGE CLARK, LTD.
SOUTHWICK ENGINE WORKS
SUNDERLAND.

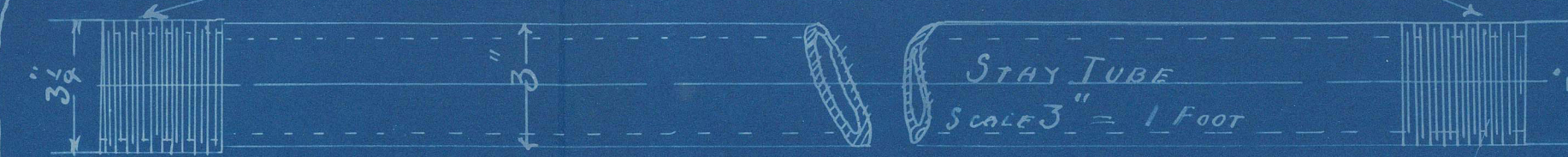
WORKING PRESSURE 180 LBS PER SQUARE INCH

ALL PLATES, MAIN STAYS & RIVETS OF STEEL, TUBES & SCREW STAYS OF IRON, TUBES CAP WELDED

ALL HOLES DRILLED IN POSITION, TENSILE STRENGTH TAKEN AT 27 TONS PER SQUARE INCH

SCALE 1" = 1 FOOT

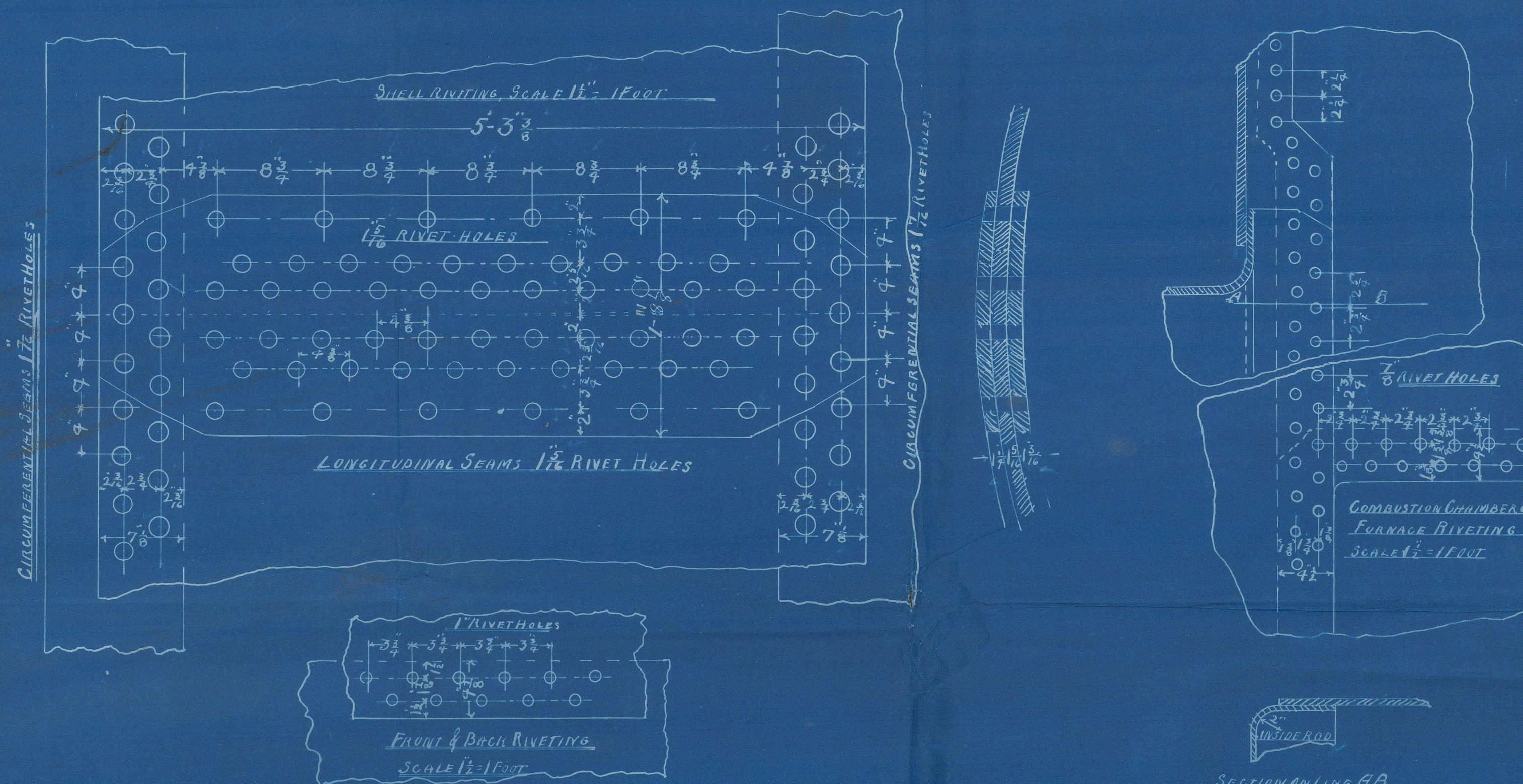
SCREWED 9 THREADS PER INCH



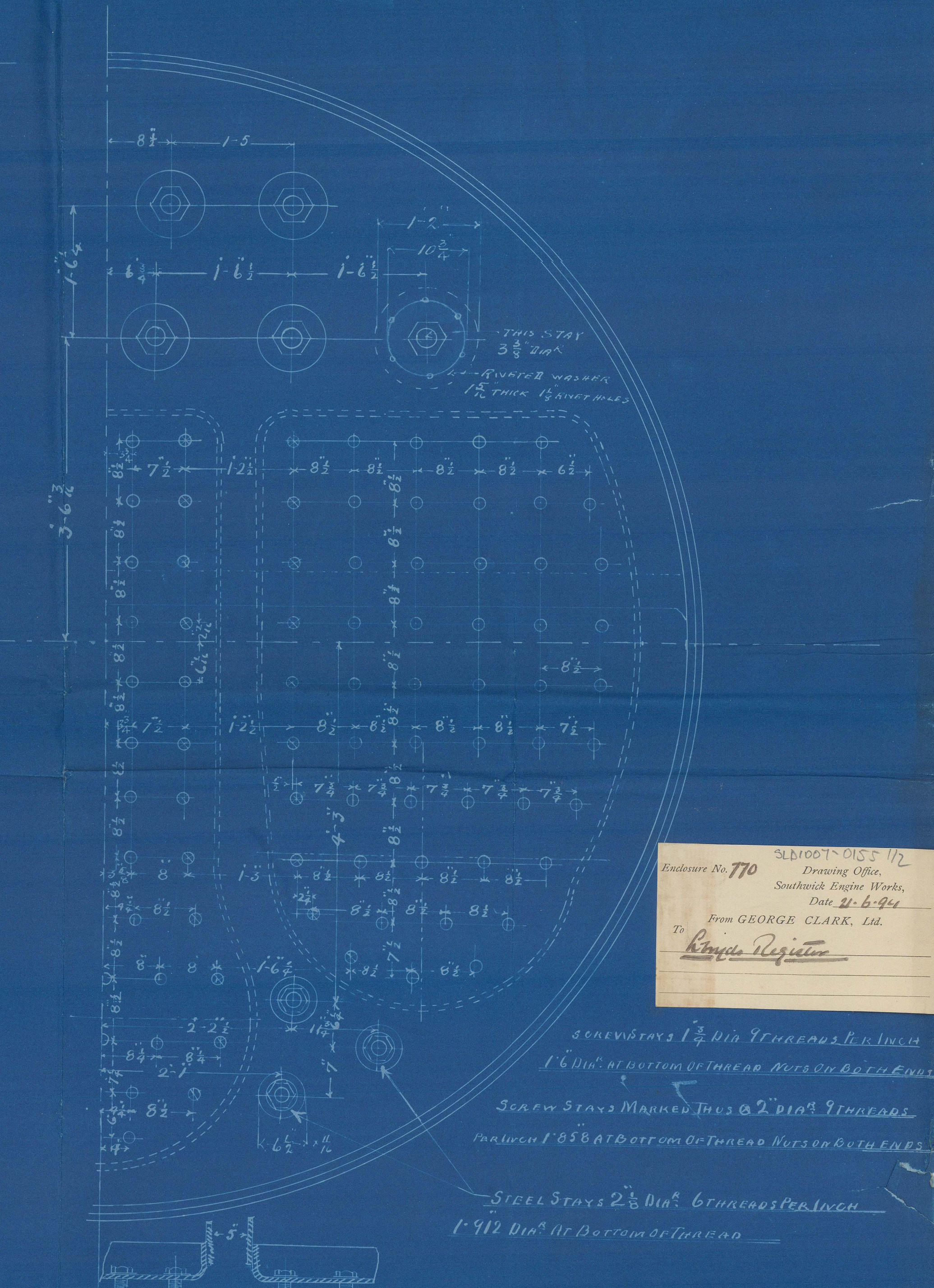
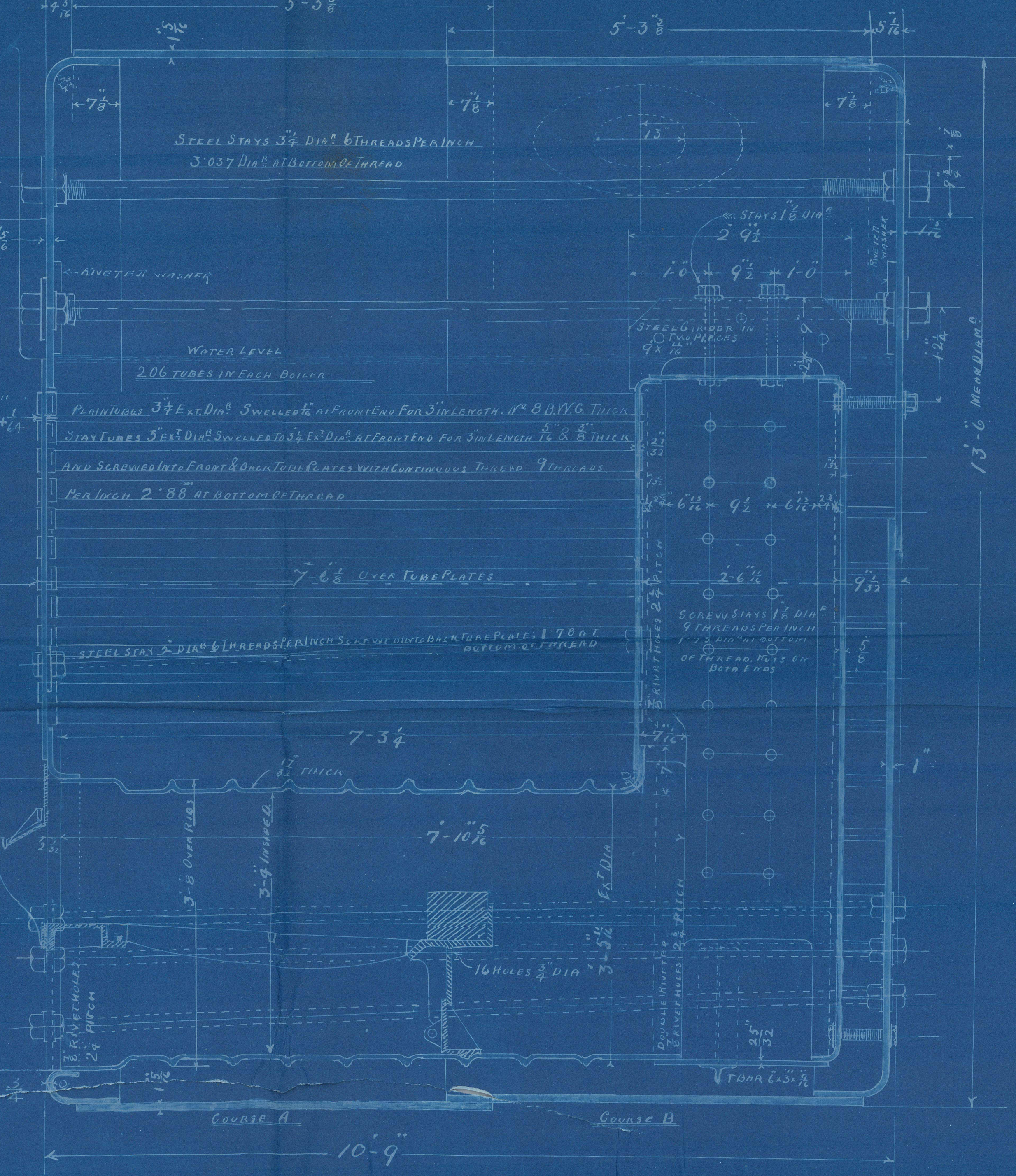
STAY TUBE THUS 5/8" THICK

PLAIN " " NO 8 W6 THICK

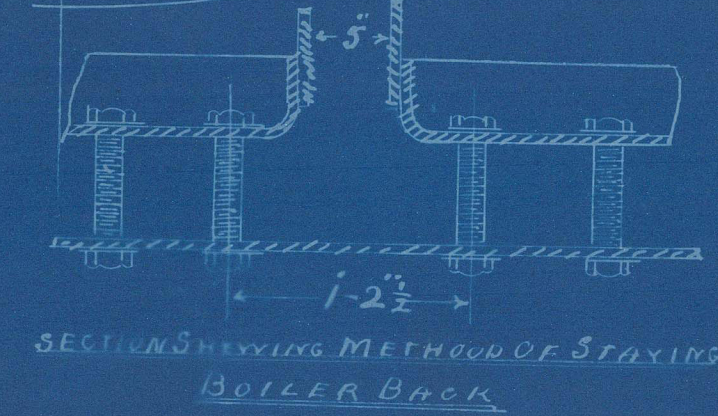
PLATES	THICKNESS	SURFACES	SQ. FT.
SHELL	1 1/2	206 TUBES	1314.4
FRONT TUB. PLATE	1 1/2	3 FIRE BOXES	182
" " BOTTOM	1 1/2	3 FURNACES	121
BACK " "	1 1/2	BACK TUB. PLATE	35.7
FRONT BOX TOP	1 1/2	FRONT " "	27.8
" " SIDES	1 1/2	TOTAL ONE BOILER	1680.7
" " BACK	1 1/2	" " THICKER	5042.1
FURNACES	1 1/2	" " WATER " "	381
GUARDS TWO PLATES	1 1/2	" " ARENT V. TUBES	25.12
STAYS STEAM SPACE 3/4 INCH	1 1/2	AREA 2 TUBES	
" " WATER " " 2 1/2 INCH	1 1/2	CRACK SURFACES	
" " " " 1 1/2 " "	1 1/2	TOTAL STEAM SPACE 1000 CUBIC FT.	



12 1/2 PITCHES IN CIRCUMFERENCE



SLB1007-0155 1/2
Drawing Office,
Southwick Engine Works,
Date 21.6.42
From GEORGE CLARK, Ltd.
To
Rings Register



BOILERS No 607

SLB1007-0155 1/2

Amended Drawing BOILERS No 607

WORKING PRESSURE 180 LBS PER SQUARE INCH

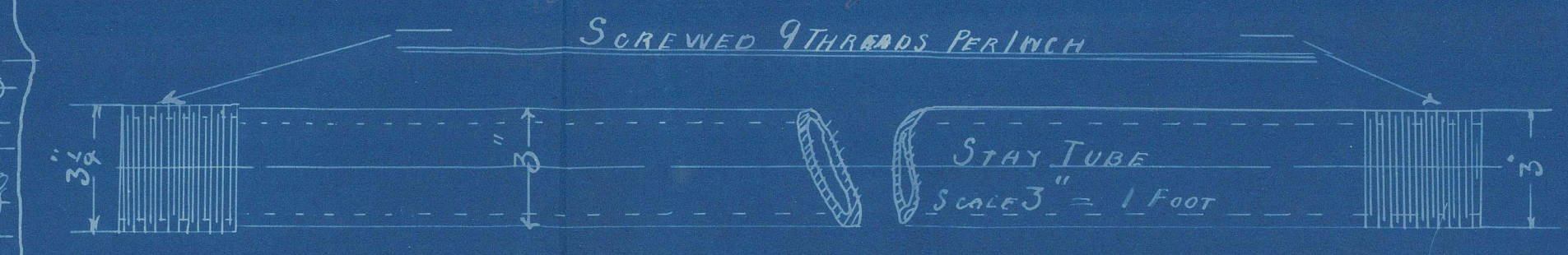
3 OFF

GEORGE OLARK LMD
SOUTHWICK ENGINE WORKS
BUNTERLAND.

ALL PLATES, MAIN STAYS & RIVETS OF STEEL, TUBES & SCREW STAYS OF IRON, TUBES LAP WELDED
ALL HOLES DRILLED IN POSITION, TENSILE STRENGTH TAKEN AT 27 TONS PER SQUARE INCH

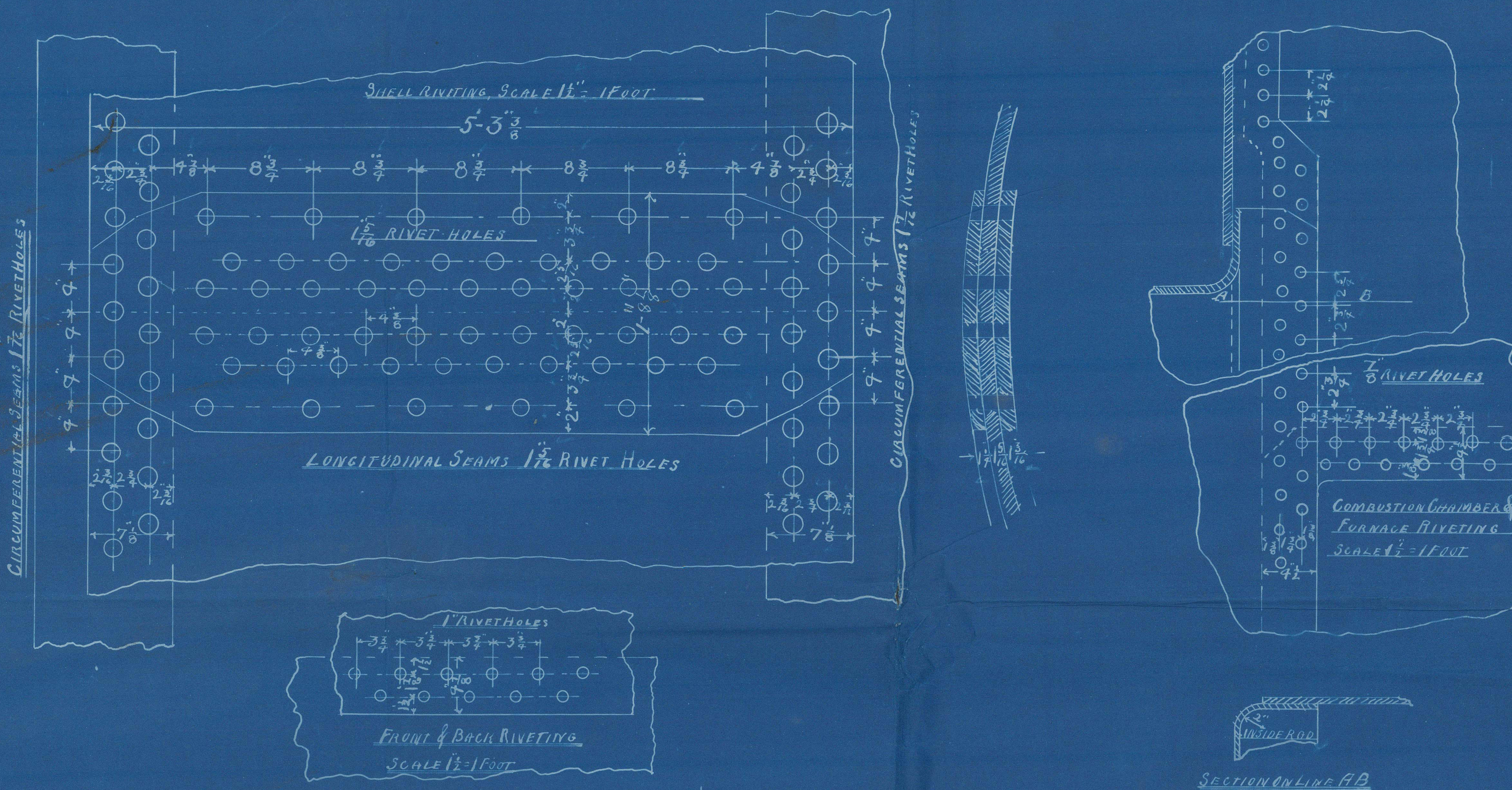
SCALE 1" = 1 FOOT

J. Liggins & S. S. N.

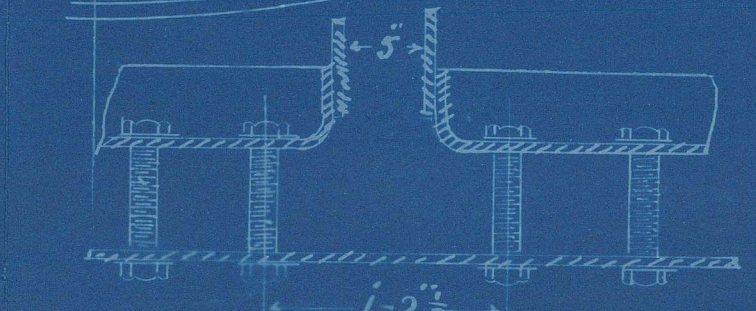
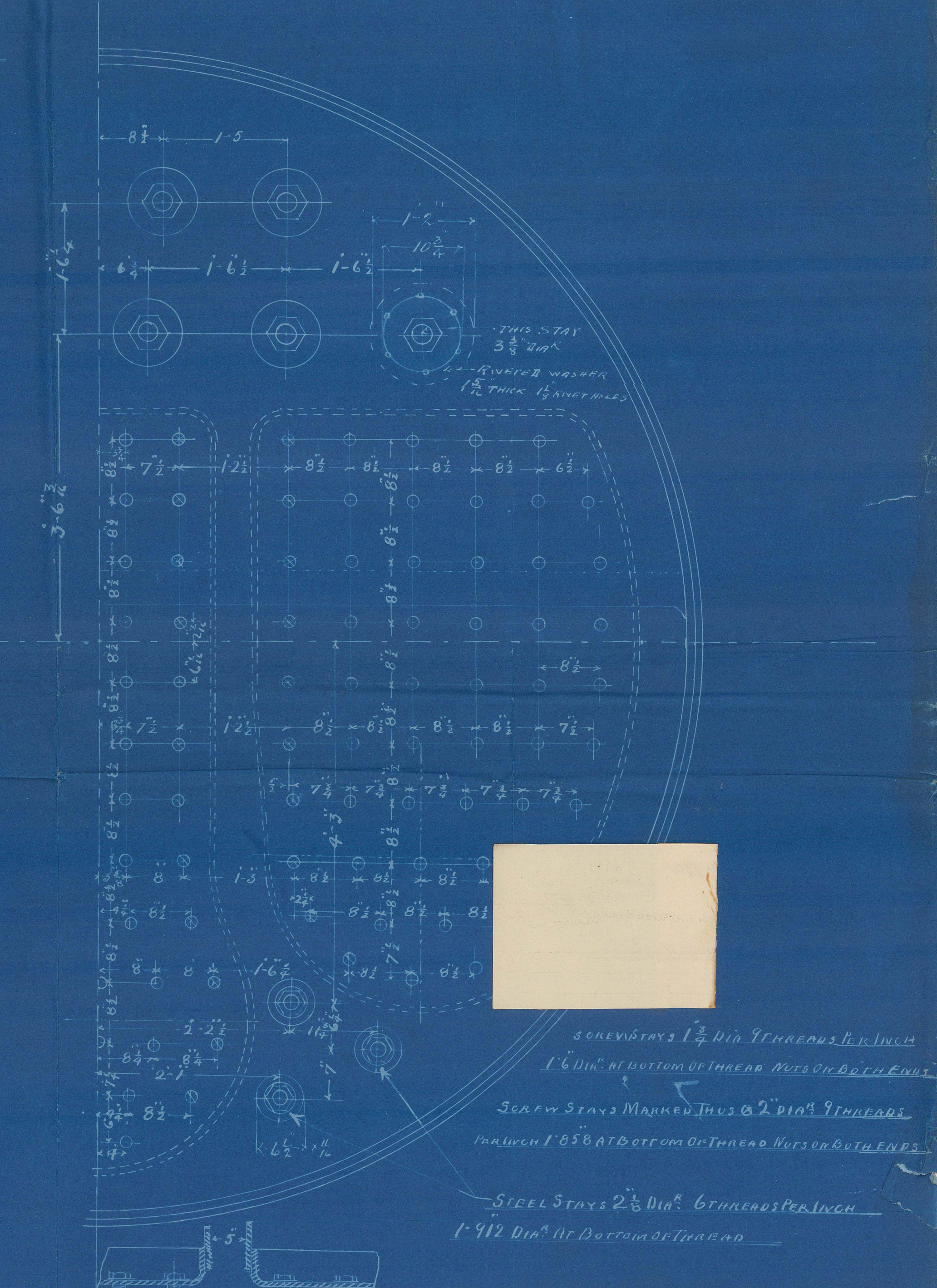
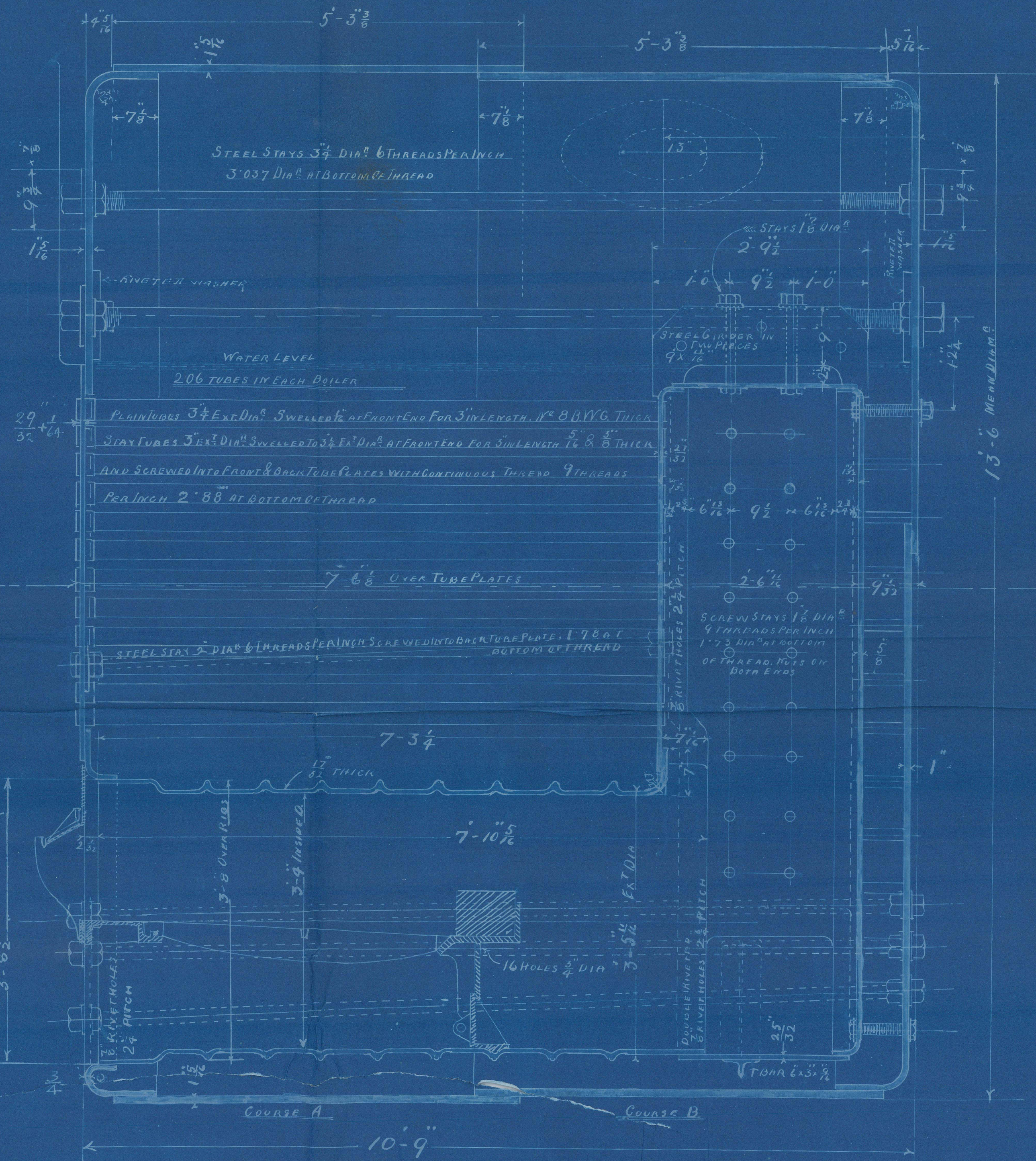
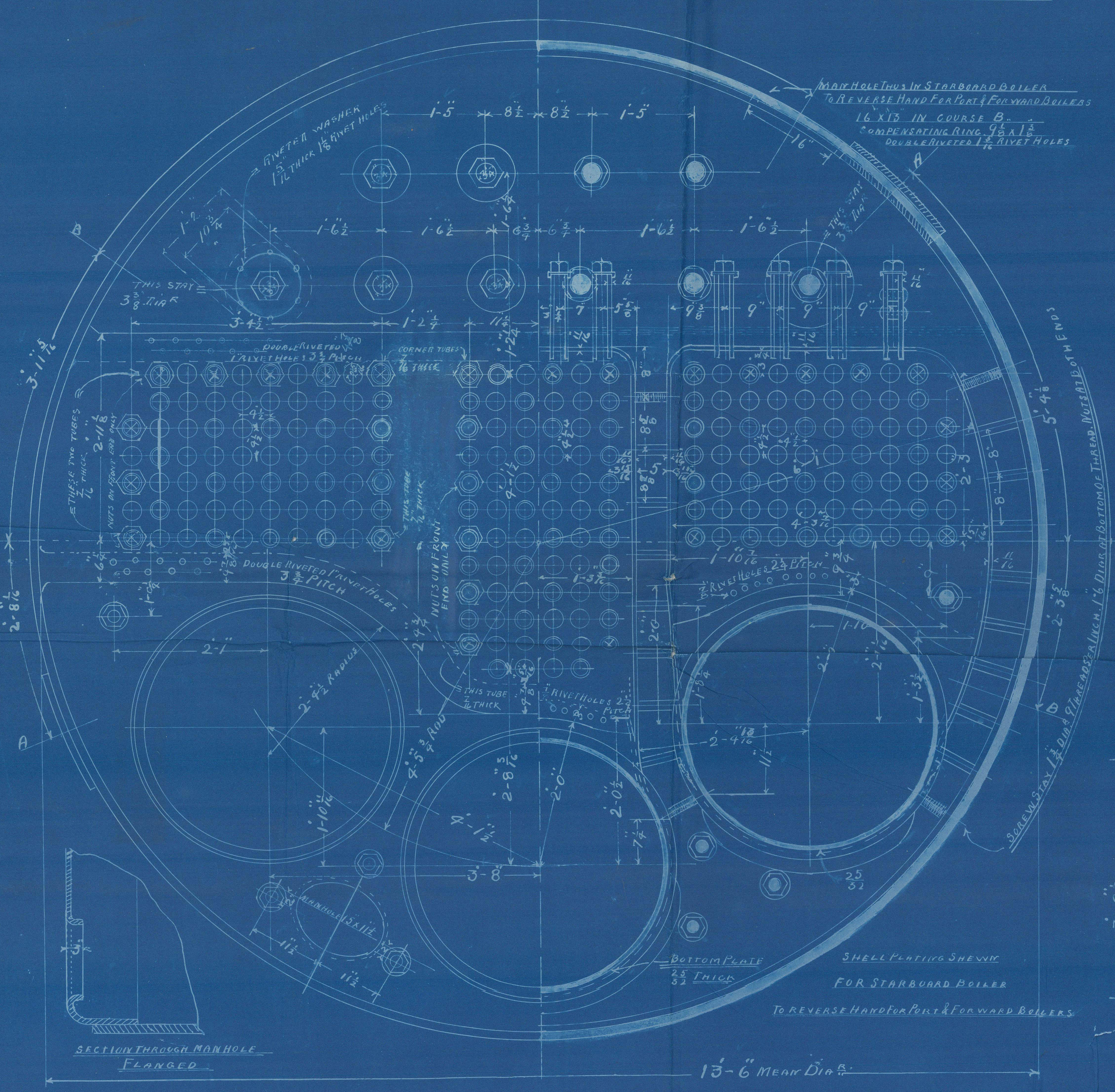


STAY TUBES THUS $\frac{5}{8}$ " THICK
" " " " $\frac{3}{4}$ " " "
PEPIN " " N° 8 1/2 INCH

PLATES	THICKNESS	SURFACES	SQ. FT.
SHELL	1 1/8"	206 TUBES	1314.4
FRONT TUBE PLATE	1 1/8"	3 FIRE BOXES	182
" " BOTTOM	1 1/8"	3 FIRE BOXES	121
BACK " "	1 1/8"	BACK TUBE PLATE	35.7
FIRE BOX TOP	1 1/8"	FRONT " "	27.6
" " SIDES	1 1/8"	TOTAL ONE BOILER	1680.7
" " BACK	1 1/8"	" " THREE "	5042.1
FURNACES	1 1/8"	" " WATER " "	381
GURDERS TWO PLATES	1 1/8"	" " GREAT WIND TUBES	25.12
STAYS STEAM SPACE 3 1/2 INCH	1 1/8"	AREA 2 TUBES	
" " WATER " 2 1/2 INCH	1 1/8"	CRATES SURF	
" " " 1 1/8 INCH	1 1/8"	TOTAL 37044 3/4 SPACE 1000 CUBIC FT.	



SECTION ON LINE A-B



SECTION SHOWING METHOD OF STAYING BOILER BACK

BOILERS No 607
SLD 1007-0155 3/2

^{not found}
Ratings n^o ~~532~~
Classes 60
Amended tracing
"Ile de La Reunion"

SUNDERLAND.

SUNDERLAND. N^o. 18848

SLA1007-0155 1/2



© 2021

Lloyd's Register
Foundation