

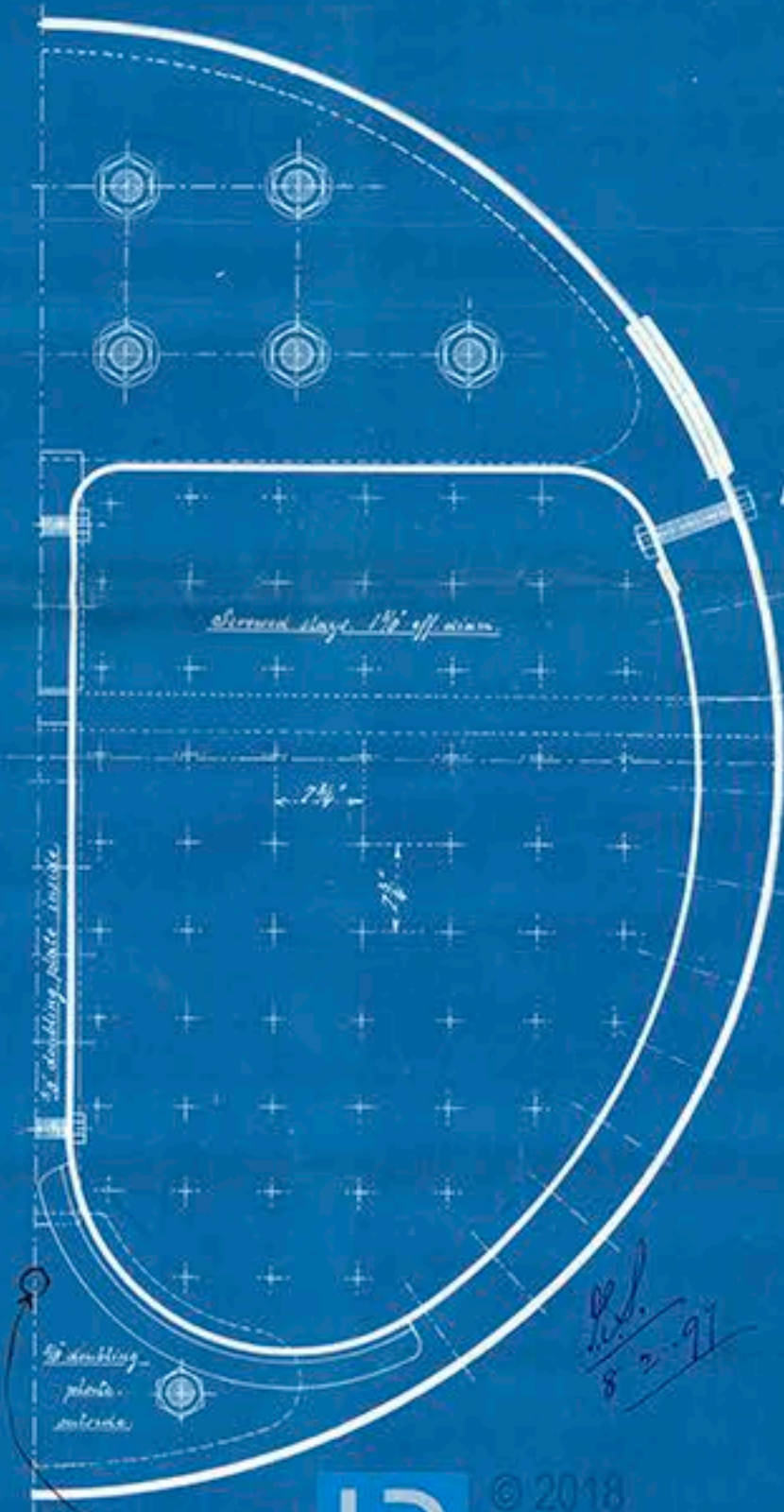
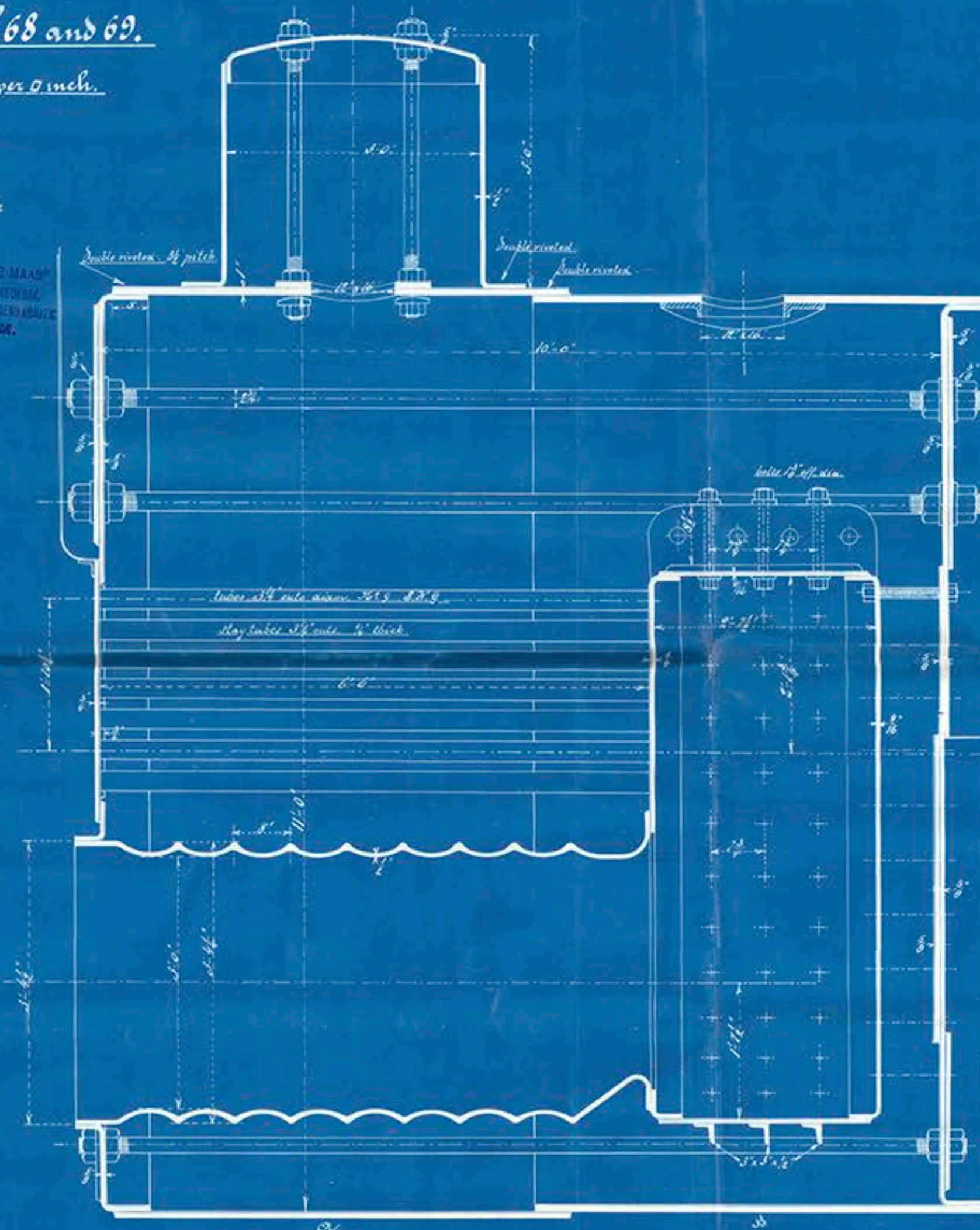
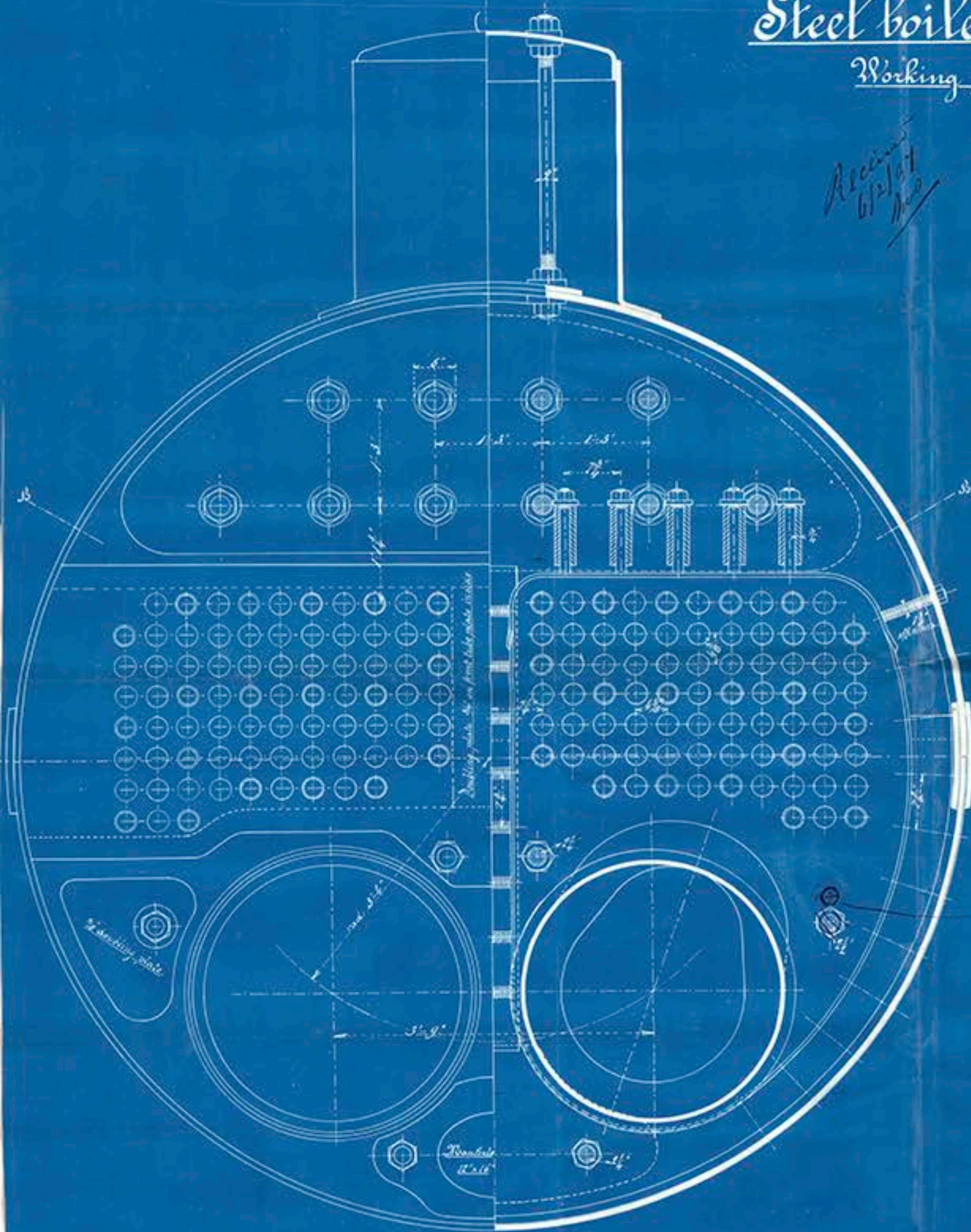


Steel boiler for No: 68 and 69.

Working pressure 375 lbs. per sq. inch.

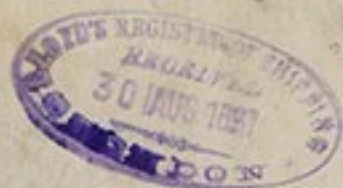
Scale 1: 12.

January 1897.





Secretary's letter E. 8/2/97.  
Inside hull stress not less than  $\frac{1}{2}$  in.  
Additional longitudinal str. lower  
back end plate, in which str. to be fitted  
in back tube plate as amended in plan -



Main boiler.  
S.S. "Malaban"  
Port: Rotterdam  
Report No. 2291 E

Sister ship Bebalan to  
follow -



© 2018

Lloyd's Register  
Foundation