

30.4.87

# Midship Section

Scale 3/4" = 1'-0"

Built by Messrs J. H. Smith  
at Newcastle  
in 1887.

No 410

## Screw Pump Hopper Barge

No 410

Length between P.P. 137'-7"

Beam 27'-2"

Depth moulded under gangway 10'-5 1/2"

Half breadth 13'-6"

Depth from keel to deckbeams 11'-2"

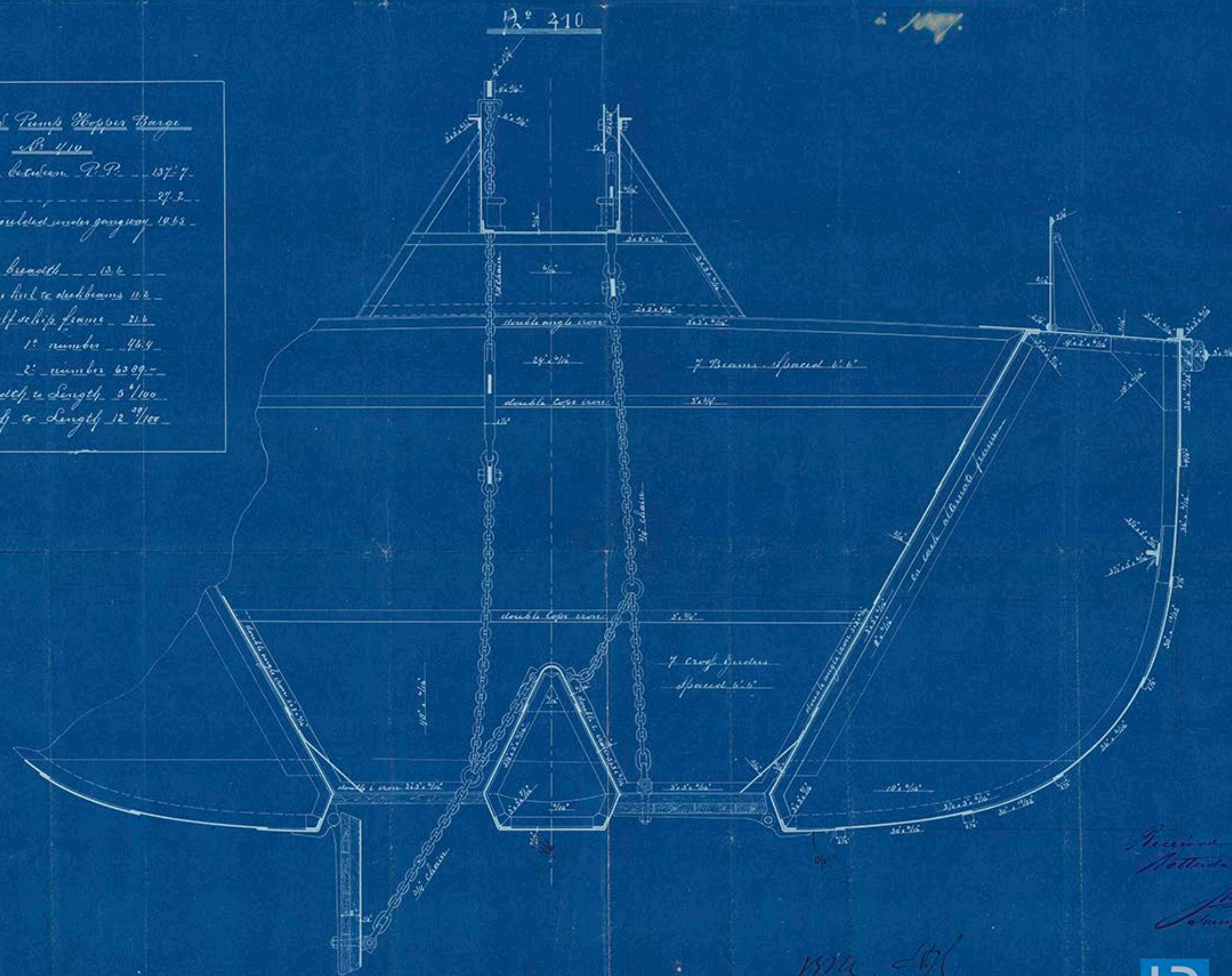
Girth of half ship frame 21'-6"

1<sup>st</sup> number 46'-4"

2<sup>nd</sup> number 63'-8 1/2"

Breadth to Length 5'-1/100

Depth to Length 12'-9 1/100



Received  
Nottingham 27 Apr 1887  
J. H. Smith  
Owner to Lloyd's Register

1870 27/4/87



Lloyd's Register  
Foundation





© 2018

Lloyd's Register  
Foundation