

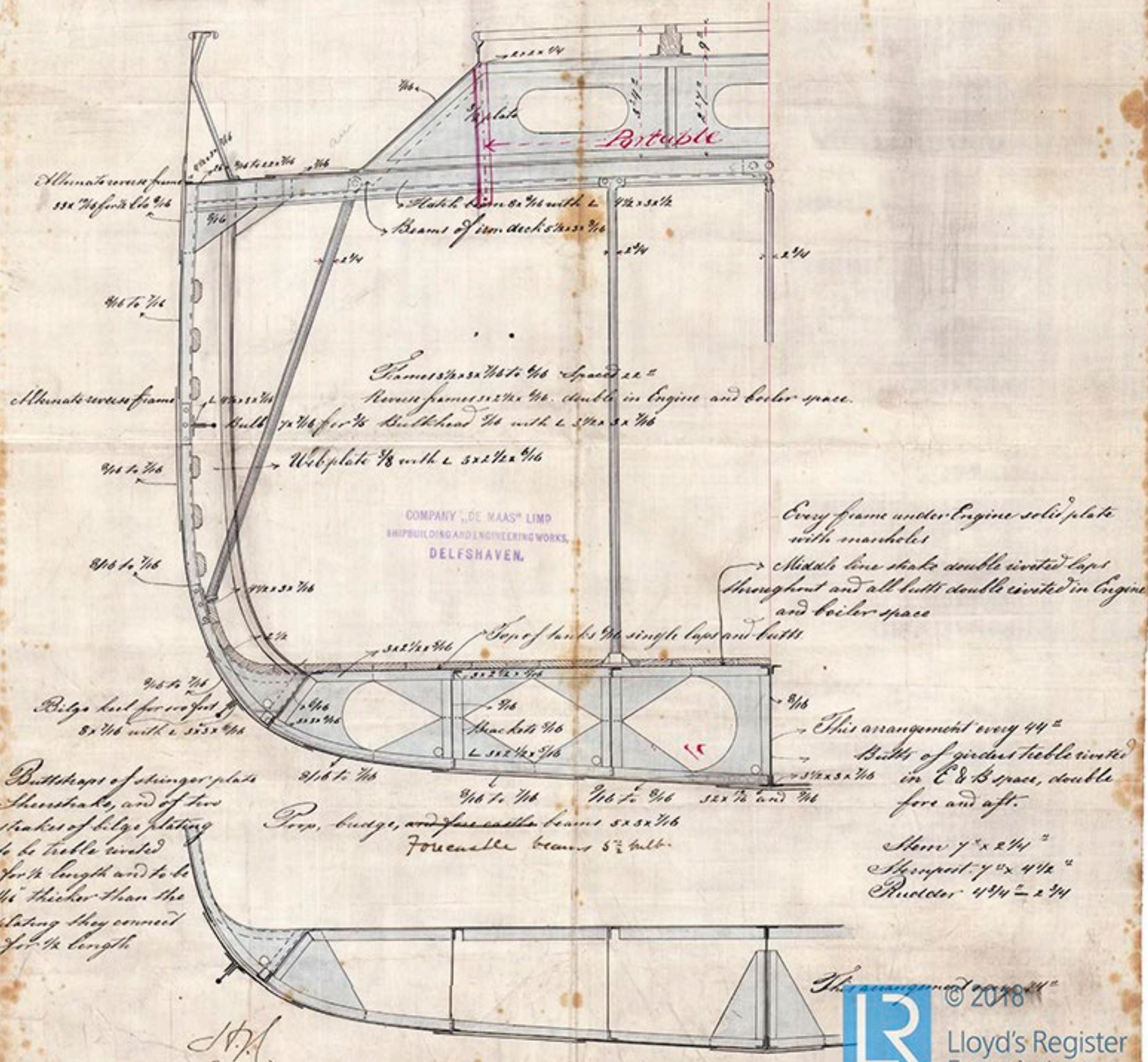
THE REGISTERED
- 5 NOV. 83.
LLOYD'S REGISTER OF SHIPBUILDERS
19 NOV. 83
203 DOZ.

Midship Section N^o 54

Length between perpendiculars . 182' 0"
 Breadth moulded 29' 6"
 Depth 15' 2"
 Scale 1/2 inch = 1 foot.
 Class Lloyd's 100 A

Rushend.
 Lot No. 724

Sr. to Rot.
 20.11.83.



J.H.A.
 20/11/83