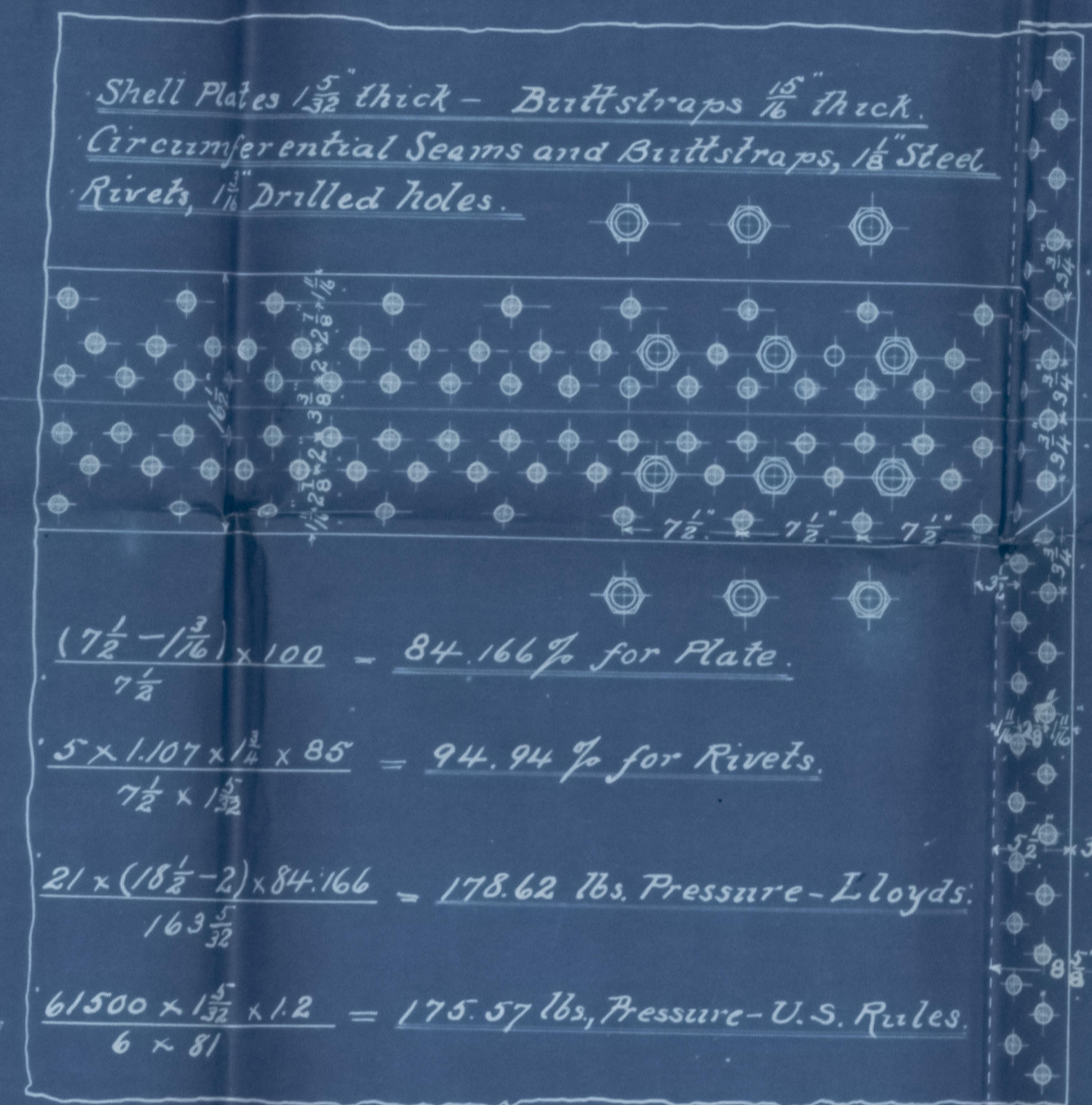
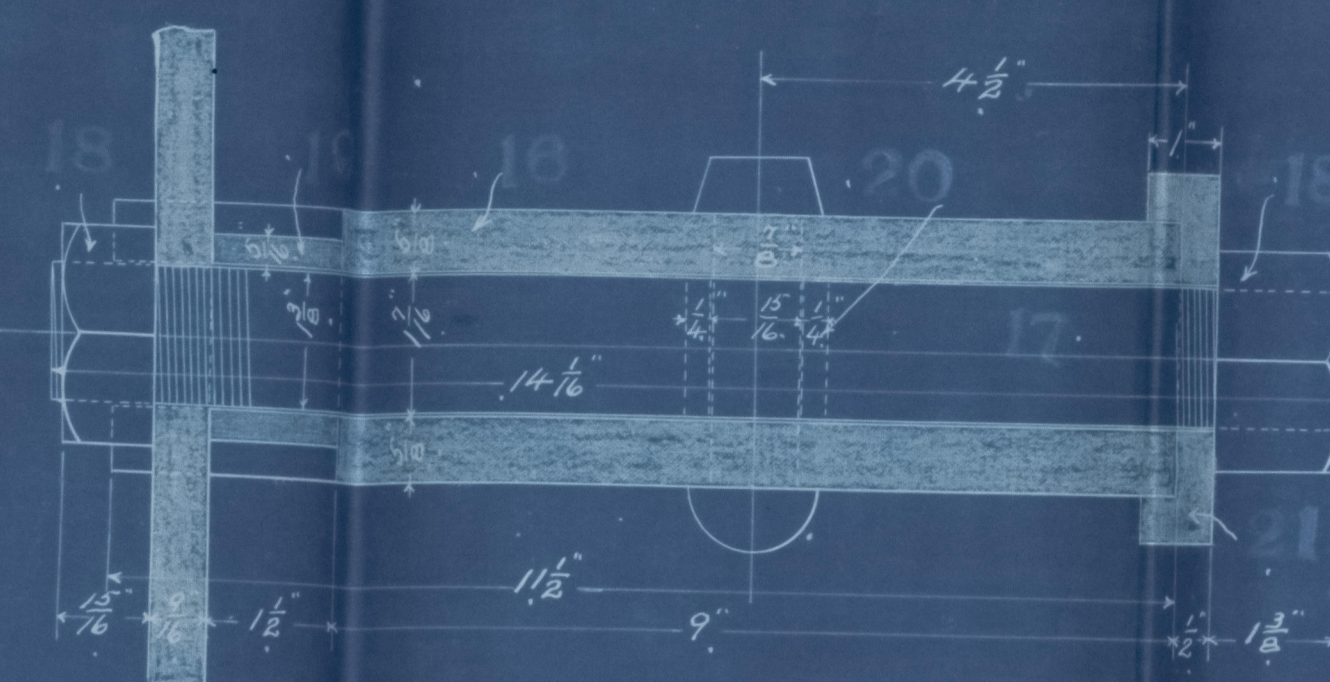
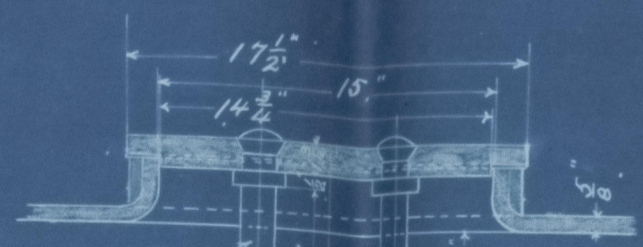


Dogs for Tube Sheet
Scale 3" = 1 foot.



Shraps = 68.33 %
 $\% 68.33 \times \frac{157}{16} = 64.8$
 $\text{pl. } 84.166 \times \frac{15}{82} = 157.31$
Prop. Thraps = 0.666.

Number of Pieces for 8 Bails			
Mark	Number of Pieces	Description	Remarks
3720	2 $\frac{1}{2}$ TUBES	{ 1760 - PLAIN TUBES "B.W.K." 960 STAY " 6 - " }	ORDERED OUTSIDE
132	LONGITUDINAL STAYS	2 $\frac{1}{2}$ " DIAM. 304 - 2 $\frac{1}{2}$ " DEEP	"
608	3 NUTS	{ 304 - 1 $\frac{1}{2}$ " 304 - 1 $\frac{1}{2}$ " }	"
16	LONGITUDINAL STAYS	2 $\frac{1}{2}$ " DIAM. 32 - 2 $\frac{1}{2}$ " DEEP	"
64	2 $\frac{1}{2}$ NUTS	{ 32 - 1 $\frac{1}{2}$ " 32 - 1 $\frac{1}{2}$ " }	"
142	LONGITUDINAL STAYS	2" DIAM. 96 - 2" DEEP	"
192	2 $\frac{1}{2}$ NUTS	{ 96 - 1 $\frac{1}{2}$ " 96 - 1 $\frac{1}{2}$ " }	"
128	5" WASHERS	FOR 2 $\frac{1}{2}$ LONGITUDINAL STAYS	"
96	LONGITUDINAL STAYS	2" DIAM. 96 - 2" DEEP	"
192	2 $\frac{1}{2}$ NUTS	{ 96 - 1 $\frac{1}{2}$ " 96 - 1 $\frac{1}{2}$ " }	"
192	JAWS FOR STAYS	2" DIAM.	DIE NO 29
96	SCREWED ENDS FOR STAYS	2" DIAM.	" NO 59 - 4 $\frac{1}{2}$ " LONG
192	$\frac{1}{2}$ " PINS FOR STAYS	2" DIAM.	" NO 61
80	CROWFEET FOR STAYS	2" DIAM.	" NO 7 $\frac{1}{2}$ 100
16	"	" 2" "	" NO 53 7 $\frac{1}{2}$ 100
112	DOUBLE PLATE GIRDERS	FOR FIREBOXES	ORDERED OUTSIDE
336	$\frac{1}{8}$ " SCREWED STAYS FOR FIREBOX TOP	{ 336 - 1 $\frac{1}{2}$ " DEEP 336 - 1 $\frac{1}{2}$ " }	"
672	2 $\frac{1}{2}$ " NUTS	{ 336 - 1 $\frac{1}{2}$ " 336 - 1 $\frac{1}{2}$ " }	"
336	THIMBLES FOR FIREBOX GIRDER STAYS	"	"
448	THIMBLES FOR FIREBOX GIRDERS	"	"
336	WASHER FOR FIREBOX GIRDERS	"	"
736	$\frac{1}{2}$ " SCREWED STAYS FOR FIREBOXES	"	ORDER OUTSIDE
472	$\frac{1}{4}$ " NUTS	$\frac{1}{4}$ " DEEP	"
736	$\frac{3}{8}$ " WASHERS FOR $\frac{1}{2}$ " SCREWED STAYS	"	"
2128	$\frac{1}{8}$ " SCREWED STAYS FOR FIREBOXES	"	"
4304	$\frac{1}{8}$ " NUTS	$\frac{1}{8}$ " DEEP	"
1048	2 $\frac{1}{2}$ " WASHERS FOR $\frac{1}{8}$ " SCREWED STAYS	"	"
80	DOGS FOR TUBE SHEET	"	DIE NO 55
80	$\frac{1}{8}$ " SCREWED STAYS FOR TUBE SHEET	"	ORDERED OUTSIDE
160	$\frac{1}{8}$ " NUTS	{ 80 - 1 $\frac{1}{2}$ " DEEP 80 - 1 $\frac{1}{2}$ " }	"
8	16" x 12" MANHOLE PLATES FOR SHELL	"	TAKE FROM STOCK #131-32
16	DOGS FOR	"	DIE NO 63
16	$\frac{1}{8}$ " STAYS " NUTS	"	" DIE NO 67 - 3 $\frac{1}{2}$ " LONG
16	15" x 11" MANHOLE PLATES FOR FRONT	"	TAKE FROM STOCK #131-32
32	DOGS FOR	"	DIE NO 65
32	$\frac{1}{8}$ " SHIMS " NUTS	"	" NO 67 - 7 $\frac{1}{2}$ " LONG
16	$\frac{1}{8}$ " x 8" RINGS	"	"
8	FINGER FOR STOP VALVE	"	CAST STEEL O.P. FILTER ENDS #14-197

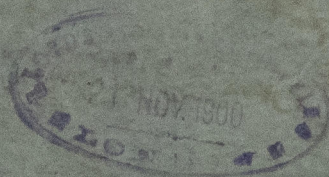
LM
5/4/99

Main Boilers

for two Scr. Steamers

N^o 304-5 & 6 -

Report N^o 965



© 2021

Lloyd's Register
Foundation