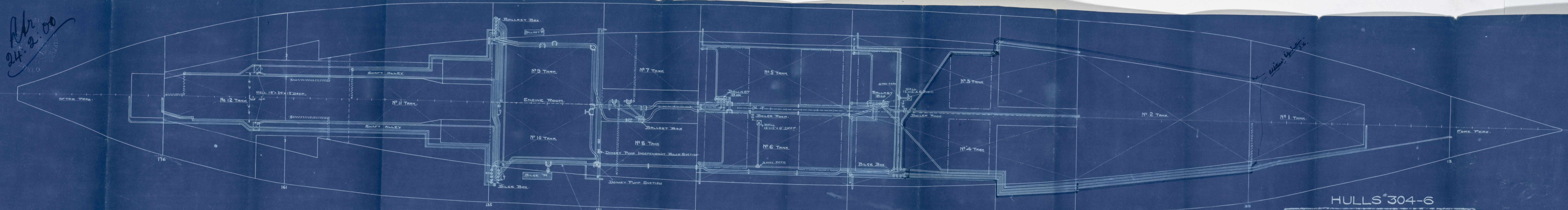


Rev 24.2.00



*Engine suction not to be less than 3" dia.
 Bilge injection (hull large) to be fitted to engine room.
 Lift of this pump not to exceed 24 feet.*

GENERAL ARRANGEMENT
 SCALE 3/8" = 1 FOOT

See accompanying papers to be fitted

HULLS #304-6

THE W. W. CRAPP AND SONS S. & E. S. CO.	
OFFICE OF ENGINEERING DEPARTMENT	PHILADELPHIA, PA.
SIERRA SONOMA VENTURA.	
BILGE & BALLAST SYSTEM.	
DESIGNED BY W.W.C.	CHECKED BY <i>W.W.C.</i>
TRACED BY E.C.C.-W.W.C.	DATE 2-9-00.
SCALE 1/8" = 3/8"	NO. 1000
<i>W.W.C.</i> <i>E.C.C.</i> 78	

Rev 24.2.00

Pumping, Piping Plan.

Turni Sir. Stances

Dr. 304-5 + 6.

Report Dr. 965.



PHL132/59



© 2021

Lloyd's Register
Foundation